



Adressing Public Health Challenges in Caño de Martín Peña Communities

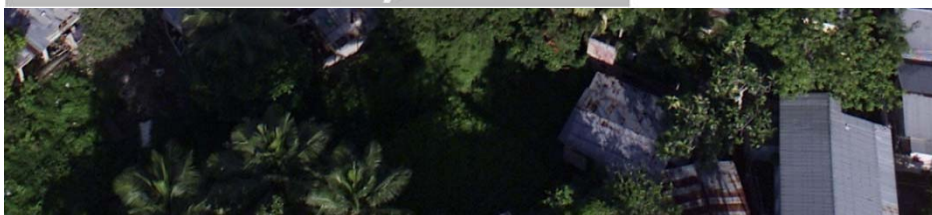
(San Juan, Puerto Rico)

***Dr. Héctor Villanueva, Medical Director
HealthproMed, Community Health Center***

July 27, 2016



Proyecto **ENLACE** del Caño Martín Peña

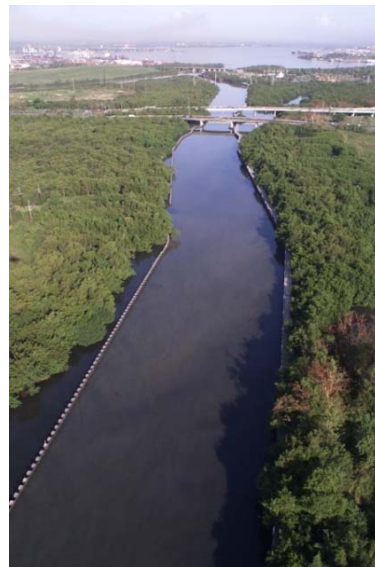


Caño Martín Peña

Caño Martín Peña, 1936



Caño Martín Peña, 2002



Western Segment

Eastern Segment

Areas without sanitary sewer system (2016)



COMMUNITIES PLANNING – ACTION – REFLECTION



ENLACE

Corporation
rs
n: Caño Martín Peña
prehensive
pment and Land Use

G-8, Inc.

- **Private, non-profit, 12 community organizations**
- **Mission:** Promote interest and involvement of residents in the decision-making processes and in the implementation of the Comprehensive Development Plan, ensuring the permanence of the communities.

Fideicomiso

- **Private, non-profit**
- **Perpetual existence**
- **Mission:** Managing land and other assets for the benefit of residents

en Participation • Advisory Board • Allies & Collaborators • Government

Caño Martin Peña: Health Issues

Surveyed condition	Martín Peña	Puerto Rico
Gastrointestinal disease*	31%	20%
Asthma (children under 5)**	44%	25%
Skin allergies (children 5-9 years old)**	35.3%	24.8%

* Gastrointestinal symptoms were positively and strongly correlated with exposure to flood waters. (Source: 2012 Ponce School of Medicine)

** Children data is from a small non-statistically significant, but comparable to the Census 2010 distribution data. (Source: 2012, University of Puerto Rico School of Public Health)





Continuous flood and health risks to adjacent communities.



Accomplishments

Environmental Awareness
Flood Monitoring
World Habitat Award (2016)
Housing Rehabilitation and
Relocation





Community Health Center Partnership



HealthproMed

HealthproMed is a HRSA Bureau of Primary Health Care funded grantee located at Barrio Obrero, Santurce, one of the Caño Martín Peña communities.

HPM is the major health care provider where the people living on the Caño can access qualify comprehensive primary health care services.

HPM CHC have established a strong relationship with the Enlace Project not only as a health services provider but also through the educational and health activities developed by the HPM School Based Program and Health Promotion and Community Outreach Programs.



Community Engagement

Coordinated action by all sectors: government, nongovernmental, tertiary organizations and community resources

Reducing health disparities and ensuring resources

Continuous reevaluation of primary health services based on community health assessment

Intersectorial dialogue to empower community



Health Promotion and Education: Zika Response

Response Team (HRSA)

Family Planning Services

Outreach and Education

Zika Awareness activities

Community engagement on mosquito control

Contraception Access Network (CDC Foundation)

Commitment to provide the full range of FDA approved

contraceptive methods.





Contact Information:

Dr. Héctor Villanueva, Medical Director

787-268-4171 ext.5020

drhvillanueva@gmail.com