

Los Angeles Basin Wide

URBAN WATERS

Greenway Network

EMERALD NECKLACE INITIATIVE

CONVERGENT

Green Infrastructure

For Our Metropolitan Area



Emerald Necklace Greenways LOS ANGELES BASIN

URBAN WATERS - Building an Effective Program: Lessons Learned

- Cultivating Champions
- Paths to Securing Funding
- Developing Reportable Metrics

claire@amigosdelosrios.org
626 676 5027

Amigos de los Rios

Emerald Necklace Greenways LOS ANGELES BASIN

Building an Effective Program: Lessons Learned

Cultivating Champions -

- Collective Impact Model,
 - Multiple Scales & Jurisdictions,
 - Unearthing Significant Problems with urban infrastructure
 - Heart Burn

EMERALD NECKLACE INITIATIVE

Metropolitan Greenspace Alliance



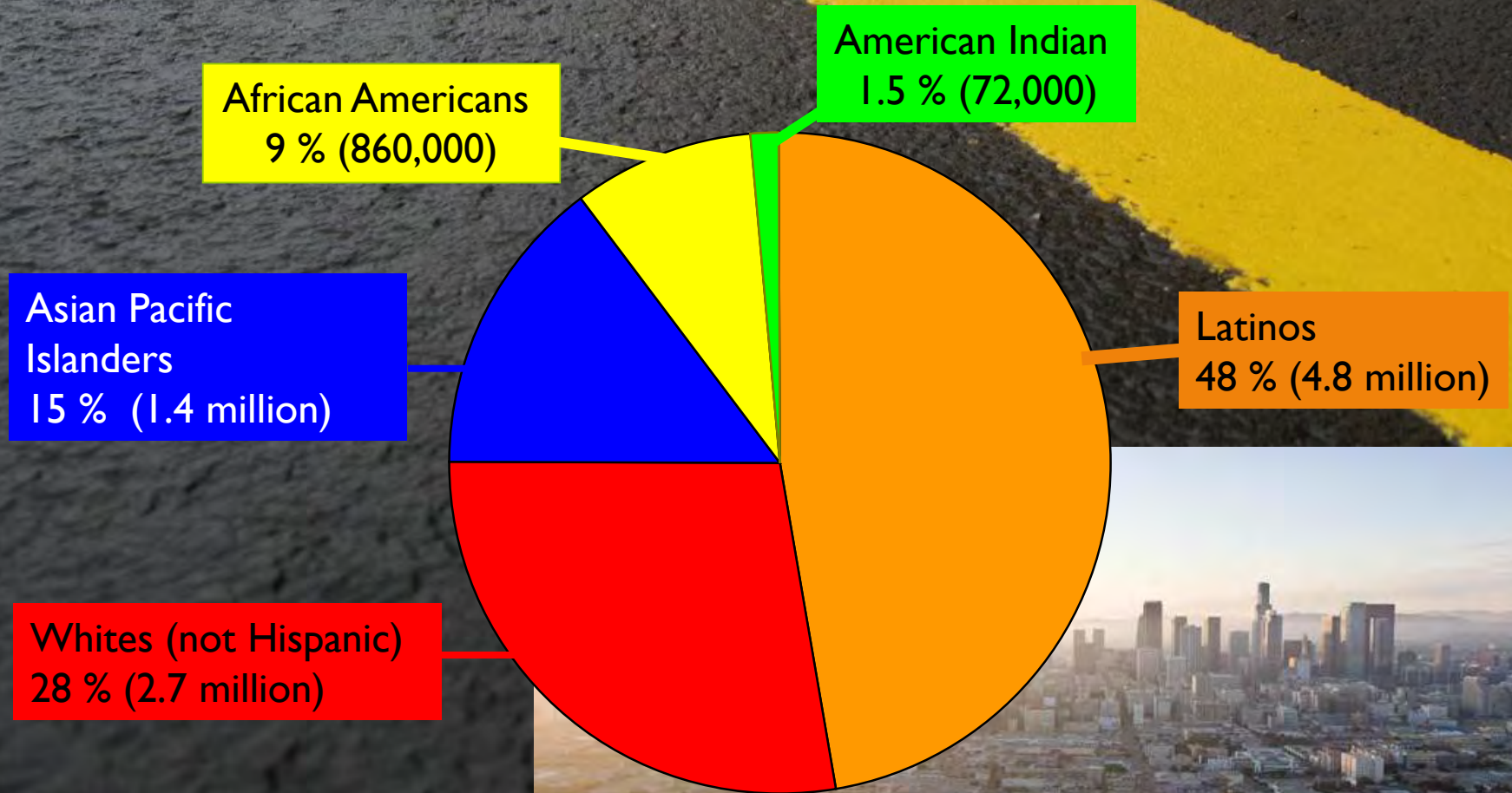
**1 in 20 Americans live w/in 1 hour of the
San Gabriel & Los Angeles Rivers**

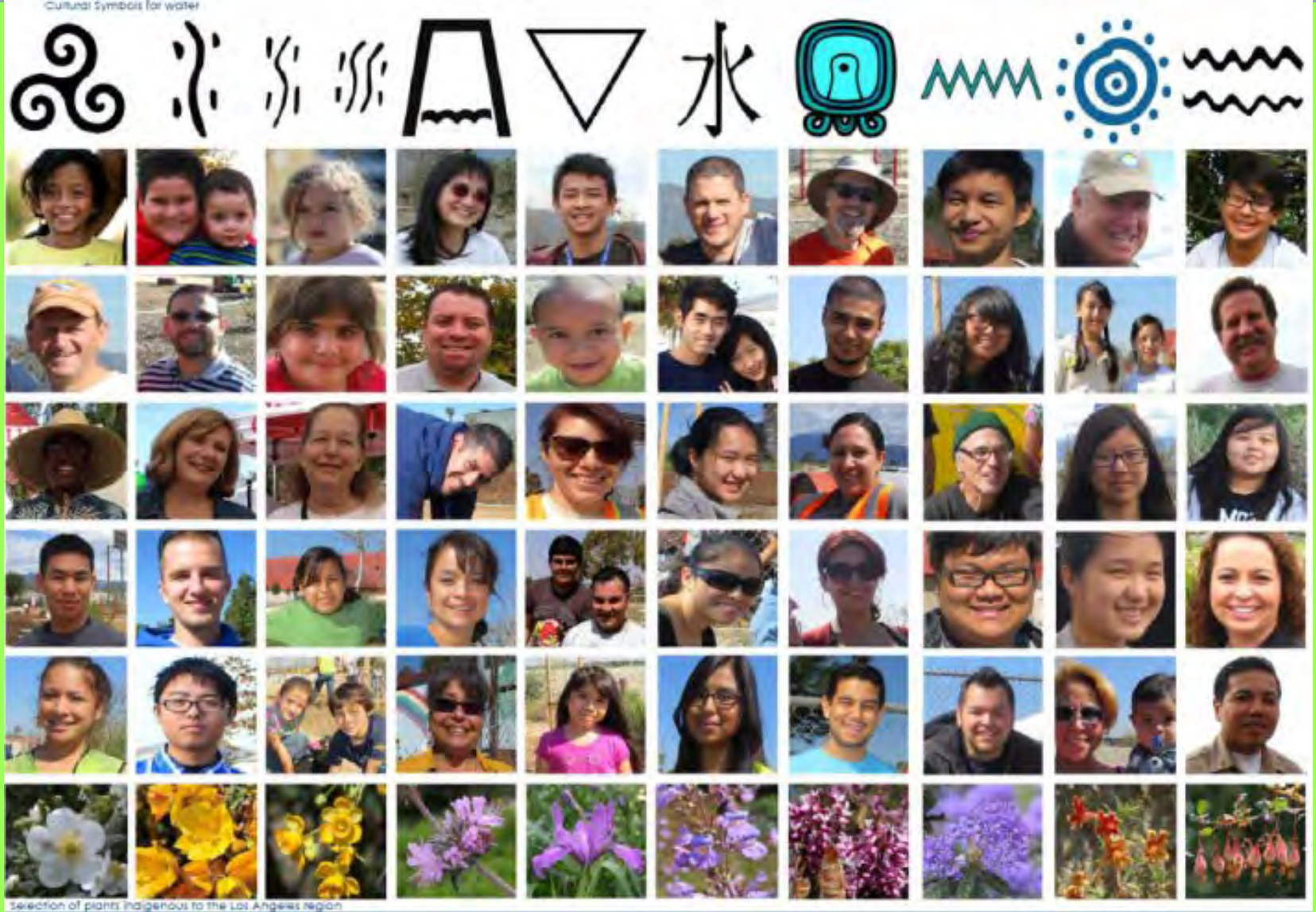


LOS ANGELES METRO CENSUS

Total Population: 9,832,000

Lack of parks impacts most racially diverse counties in nation

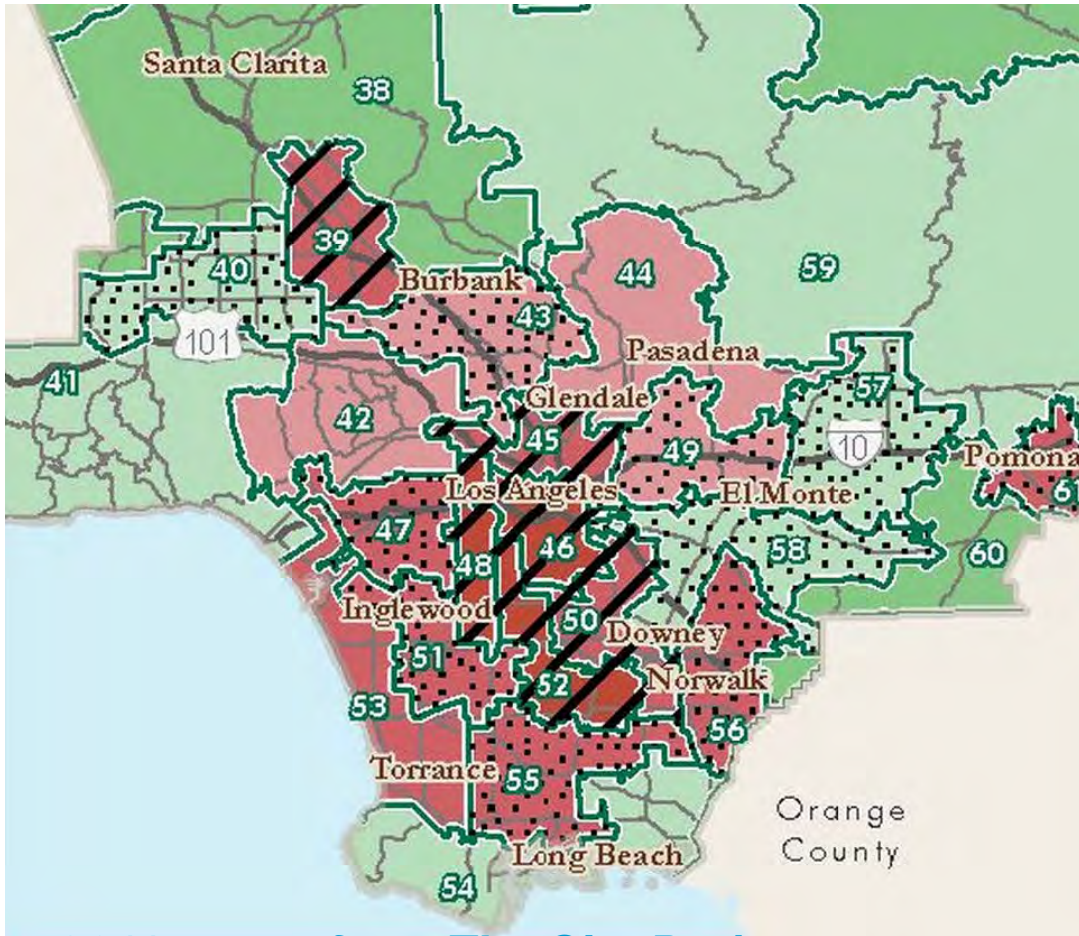




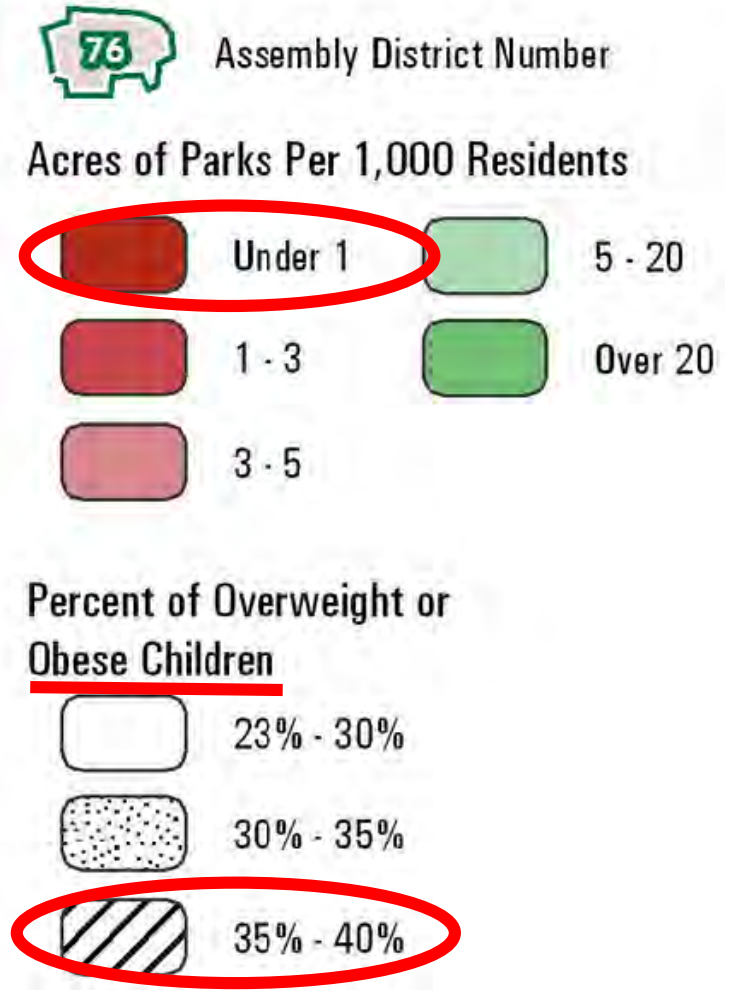
Our Diversity is our unique character as a Collective

Cultural & Natural Heritage is Beauty of LA

Disparity of Access to Natural Areas & to Recreation



- 2011 report from The City Project



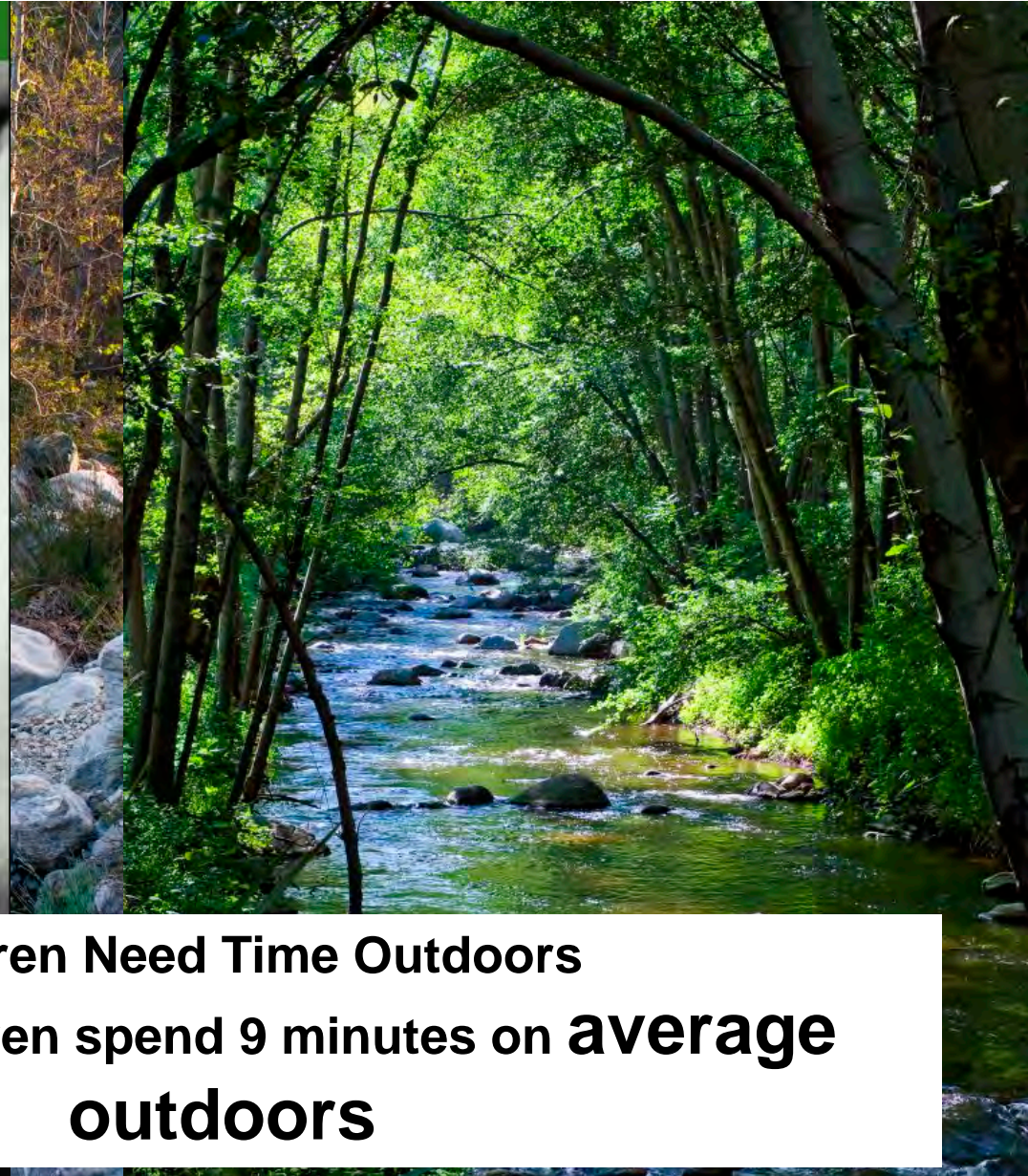
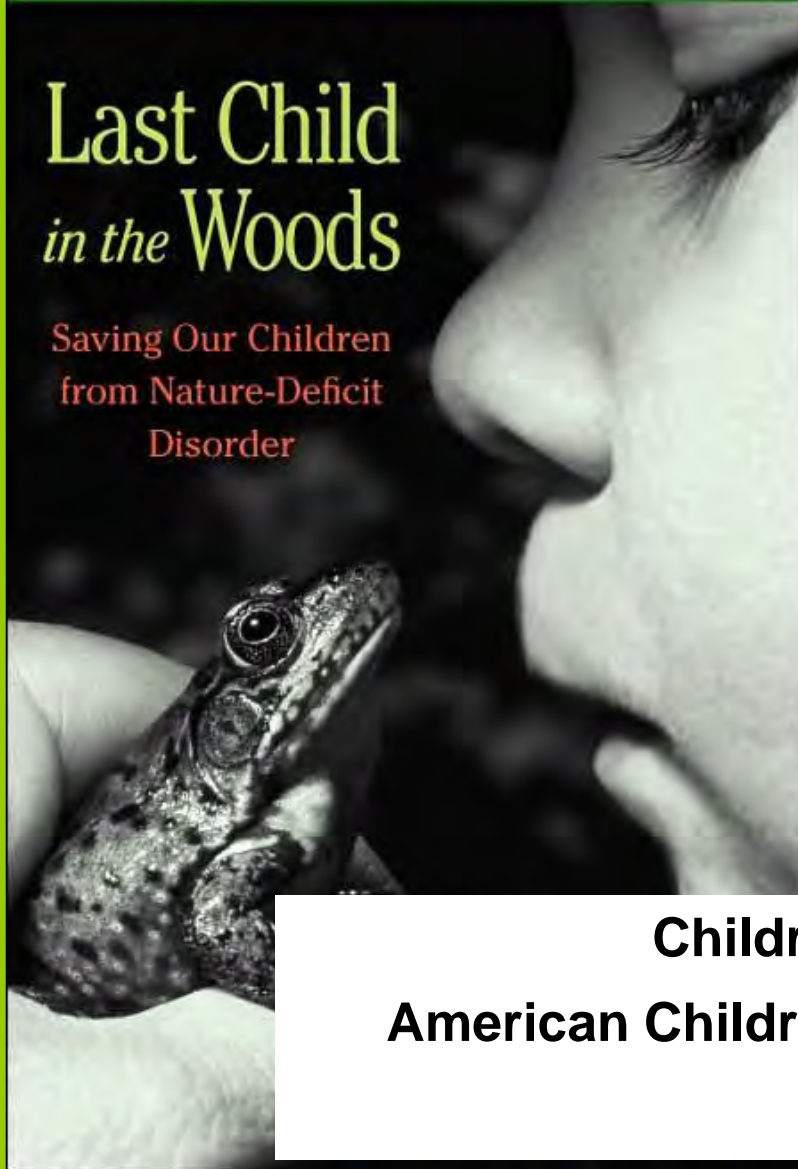
EQUITY ISSUES

SAN GABRIEL RIVER

"This book is an absolute must-read for parents." —*The Boston Globe*

Last Child *in the Woods*

Saving Our Children
from Nature-Deficit
Disorder

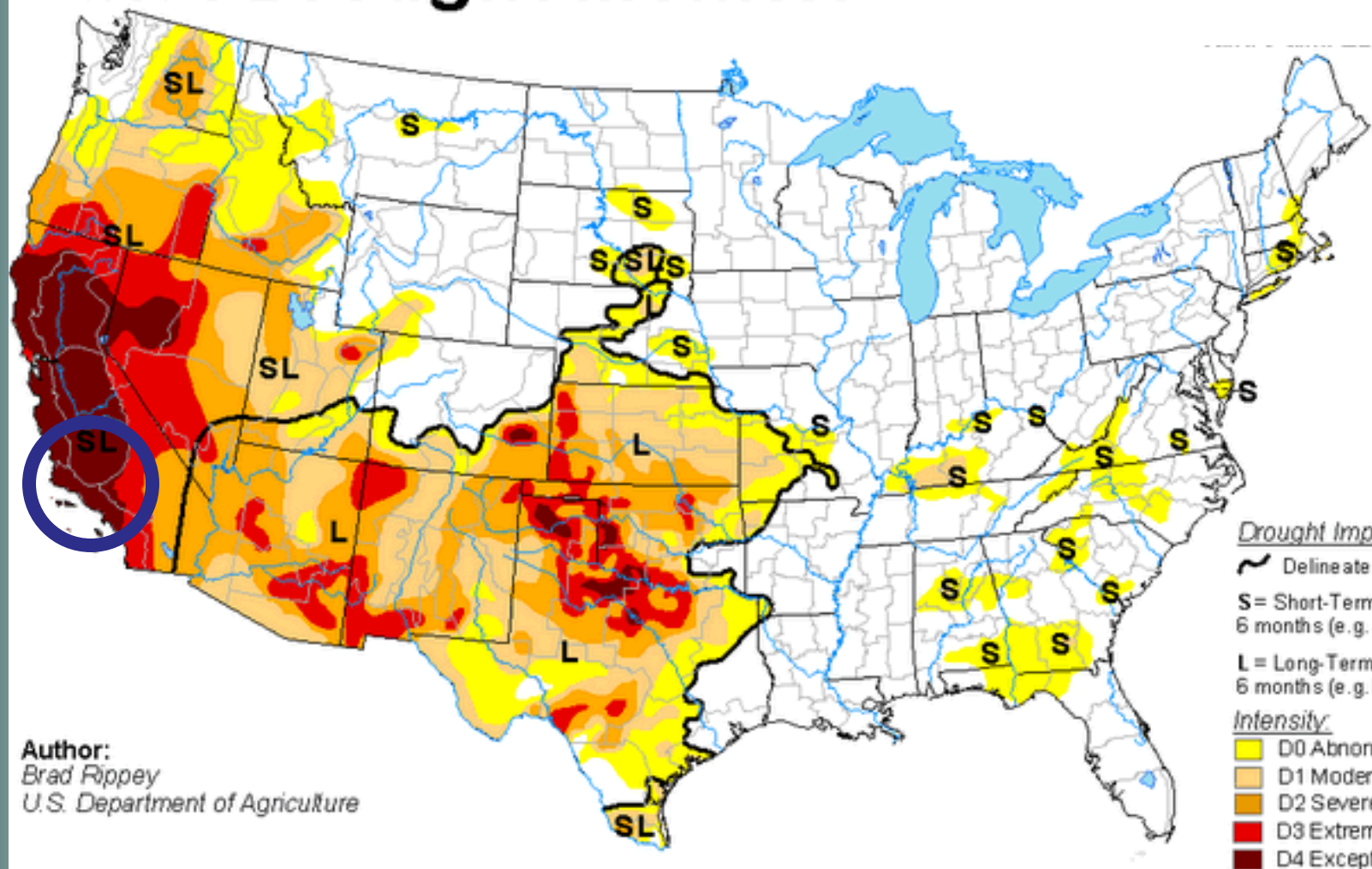


Children Need Time Outdoors
American Children spend 9 minutes on **average**
outdoors

CONNECTING FAMILIES TO NATURE

WATER

U.S. Drought Monitor



Author:
Brad Rippey
U.S. Department of Agriculture

The Rio Hondo is a **seasonal** river and is especially **powerful** during periods of excessive rain. It is important to know that the Rio Hondo is also quite dangerous even when there is not much water in the channel. The smooth, trapezoidal shape of the channel forces the water to move with great **force**. As the sides and bottom of the channel are slippery, it is very difficult to escape the strong current of the river. Be **cautious** - the river has an awesome power at **all** water levels.

The Rio Hondo did not always look as it does today. Until the river was concreted in the 1950s, the Rio Hondo offered extensive areas to farm, walk, ride horses, play, and swim. The **braided streams** of the river meandered through the area, **enriching** the soil with **rich** sediment from the San Gabriel Mountains. **Channeling** the river did prevent the area from flooding, but it also took away the valuable **recreational** space along the river banks. **Rio Vista Park** gives a piece of the Rio Hondo's original green space back to the **communities** and people of El Monte.



From top: El Monte youth using the Rio Hondo as a recreational space (© La Historia Historical Society); view of the damage done to the bridge leading to downtown El Monte after the flood of 1914 (© El Monte Historical Society)
Background image: 1941 aerial of the Rio Hondo's braided streams (© UCLA Geography Archive)

The human body is made out of approximately 55% to 60% water, so make sure you drink plenty of water while on the trail.

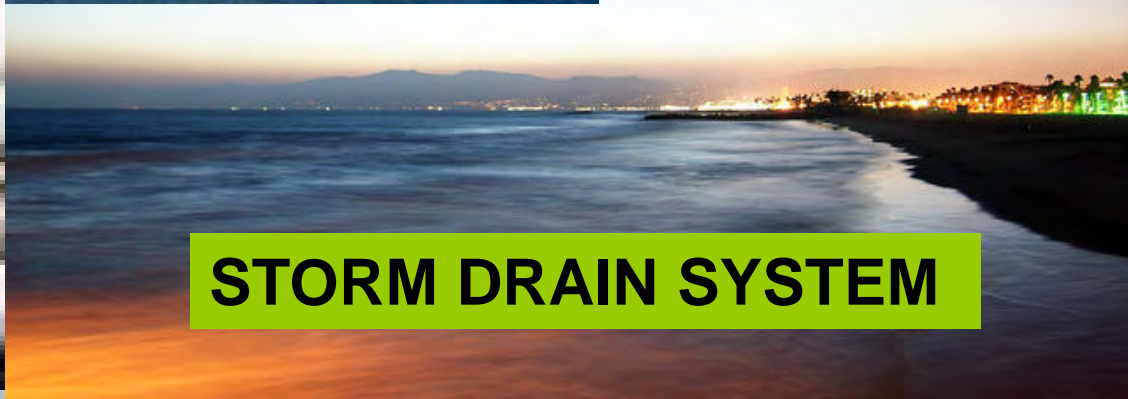
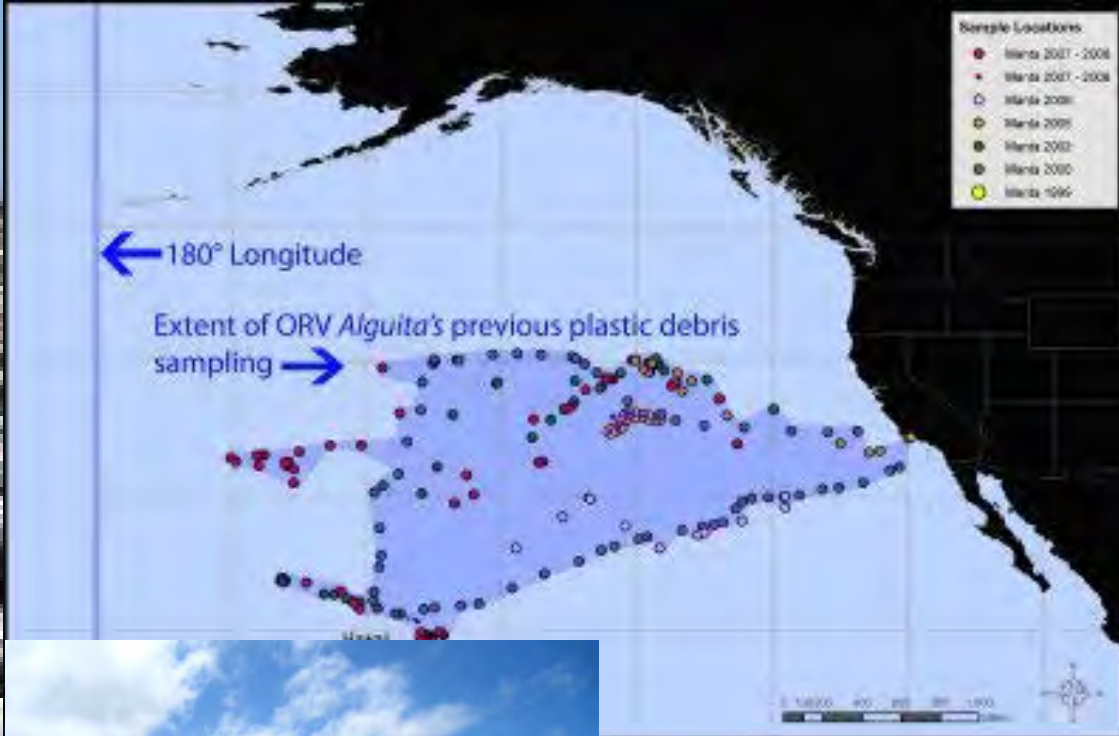
Historic Photo of the Rio Hondo



Rio Hondo



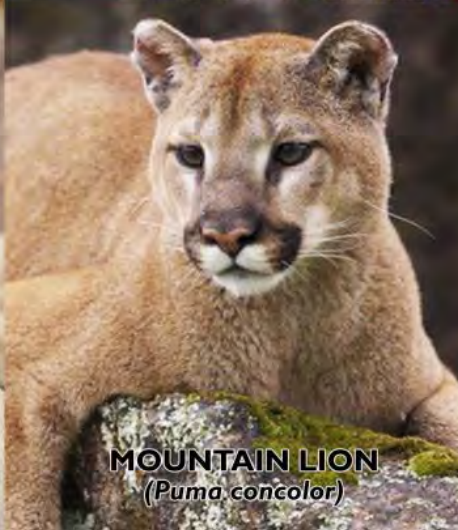
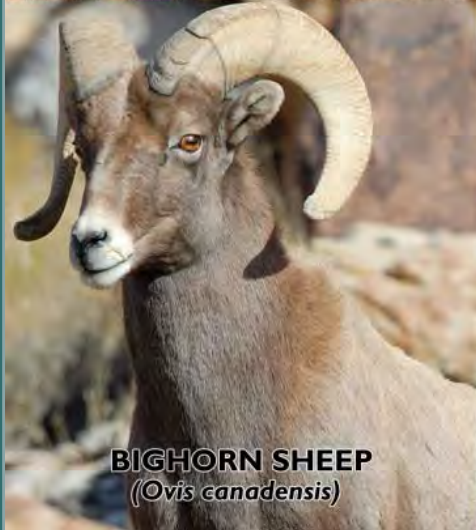
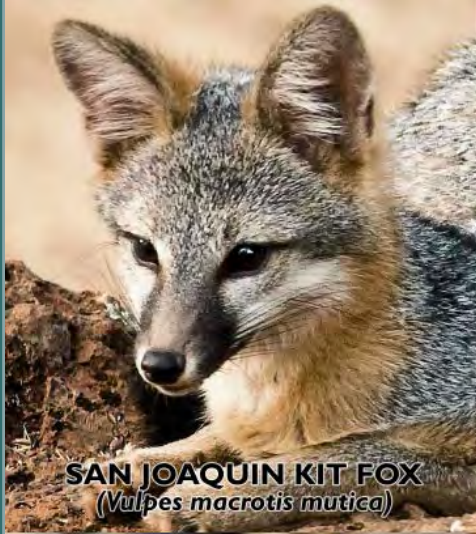
Rio Hondo Flood Control Channel



STORM DRAIN SYSTEM



Los Angeles Basin's Biodiversity – Endangered species




Ubiquitous Fires - Resilience



Station Fire of 2009



Metropolitan Greenspace Alliance



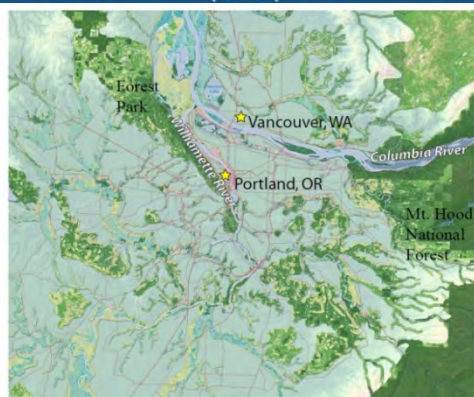
**BAY AREA
OPEN SPACE COUNCIL**

The Bay Area Open Space Council (OSC) is a collaborative of over 60 organizations – community-based groups, nonprofit land trusts and public agencies – involved in conserving, stewarding, and promoting the use of parks, trails, farms, and open spaces in the San Francisco Bay Area. The OSC was created in 1990 to fill the need for a coordinated approach to local land conservation. By working together, the OSC can achieve more and that it is critical to bring nature within reach of all Bay Area residents.

The OSC has successfully led a 5-year, science-based project to identify what lands are essential to protect for preserving biodiversity with its Conservation Lands Network. Their innovative Transit and Trails interactive website helps people find, plan and share their outdoor trips. With a focus on trailheads and low-carbon intensive ways of getting outside, Transit and Trails is the only one of its kind. The OSC holds an annual conference in May, convenes semi-monthly Gatherings and posts often to its blog about what's happening around the region in land conservation.

Bay Area Open Space Council | 2150 Abbot Way, Suite 330 | Berkeley, California 94704 | P: 510-809-8007 | jsa@openspacecouncil.org
www.openspacecouncil.org

BAY AREA OPEN SPACE COUNCIL (OSC)




THE INTERTWINE

The Intertwine is our connected network of parks, trails and natural areas in the Portland, Oregon and Vancouver/Washington region. The Intertwine provides unparalleled opportunities to preserve natural areas, open spaces, water and wildlife habitat. The Intertwine reflects our region's passion for quality of life by encouraging recreation, connection to nature, and active transportation like walking, running and biking. As our urban areas grow denser, The Intertwine promotes the health and happiness we, as citizens of the Pacific Northwest, so dearly value.

The Intertwine Alliance | P.O. Box 3632 | Portland, Oregon 97228 | P: 503.288.5790 | Mike.Wetter@oregonmetrorg
www.theintertwine.org

THE INTERTWINE

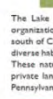


Chicago Wilderness

The Chicago Wilderness Green Infrastructure Vision (GIV) paints a bold picture of what our region can look like if we are careful to protect the natural areas, corridors, and open spaces that are critical to our quality of life. The nearly 370,000 acres of natural areas that make up Chicago's Wilderness comprise our "green infrastructure," and are as critical to the people in this region as our built environment and transportation system. The GIV identifies 1.8 million acres of prospective protection and restoration areas in the Chicago Wilderness region – spanning from southwest Wisconsin through northeast Illinois into northwest Indiana and southeast Michigan.

Chicago Wilderness | 8 South Chicago Avenue, Suite 900 | Chicago, IL 60607 | P: 312.380.2137 | F: 312.345.5608 | info@chicagowilderness.org
www.chicagowilderness.org

CHICAGO WILDERNESS

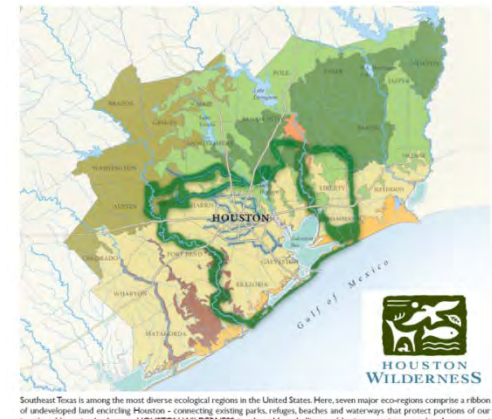



LEAP FOR BIODIVERSITY

The Lake Erie Allegheny Partnership for Biodiversity (LEAP) is a consortium of organizations. Our geographic boundary encompasses the glaciated lands and waters south of Canada from Sandusky Bay to the Allegheny Mountains. This region contains diverse habitats and rare ecosystems that harbor many unique and uncommon species. These natural communities are found within an extensive network of public and private lands throughout the glaciated region of northeastern Ohio, northwestern Pennsylvania, and western New York.

LEAP for Biodiversity c/o The Cleveland Museum of Natural History | 1 Wade Oval Dr | Cleveland, OH 44106 | P: 216.231.4600 ext. 3505
www.leapbio.org

LEAP FOR BIODIVERSITY



HOUSTON WILDERNESS

Southeast Texas is among the most diverse ecological regions in the United States. Here, seven major eco-regions comprise a ribbon of undeveloped land enclosing Houston – connecting existing parks, refuges, beaches and waterways that protect portions of our irreplaceable native landscapes. **HOUSTON WILDERNESS** is a broad-based alliance of business, environmental and government interests that act in concert to protect, preserve and promote the unique biodiversity of the region's precious remaining ecological capital which include 7 major eco-regions from bottomland hardwoods and prairie grasslands to pine forests and wetlands. This mission is accomplished through development & implementation of a San Houston Greenbelt Planning Area, which includes a slate of initiatives (supported by network partners) that provide assistance and facilitation of various policy issues, allows for Collaborative Partner Access to people, places and information and facilitates collaborative grant-organizing opportunities for local conservation efforts, ecosystem services studies, eco-tourism, and education. Currently over 60 Network Partners work on various conservation/environmental recreation aspects within the San Houston Greenbelt Planning Area.

Houston Wilderness | P.O. Box 6413 | Houston, TX 77266-6413 | P: (713) 534-7330 | F: (713) 525-7600 | green@houstonwilderness.org
www.houstonwilderness.org

HOUSTON WILDERNESS




Sweet Water

Sweet Water, the Southeastern Wisconsin Watersheds Trust, Inc. is an award-winning nonprofit partnership established to achieve healthy water resources throughout the 1,100 square mile Greater Milwaukee watershed. Recognizing that our rivers travel through the region irrespective of governmental boundaries, Sweet Water addresses the issues facing our five watersheds and nearshore Lake Michigan through a cooperative, basin-wide approach. Members include local governments, special purpose districts, non-profits, residents and representatives of business and academia.

Sweet Water | 600 E. Greenfield Ave | Milwaukee, WI 53204-2944 | P: 414.382.1766 | info@sweetwater.org
www.sweetwater.org

SWEET WATER

National Movement to bring nature to cities

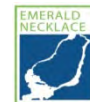
Emerald Necklace Greenways LOS ANGELES BASIN

“....either human race will continue to lose its connection to natural world, or we need a new kind of city – “a nature-rich city”.

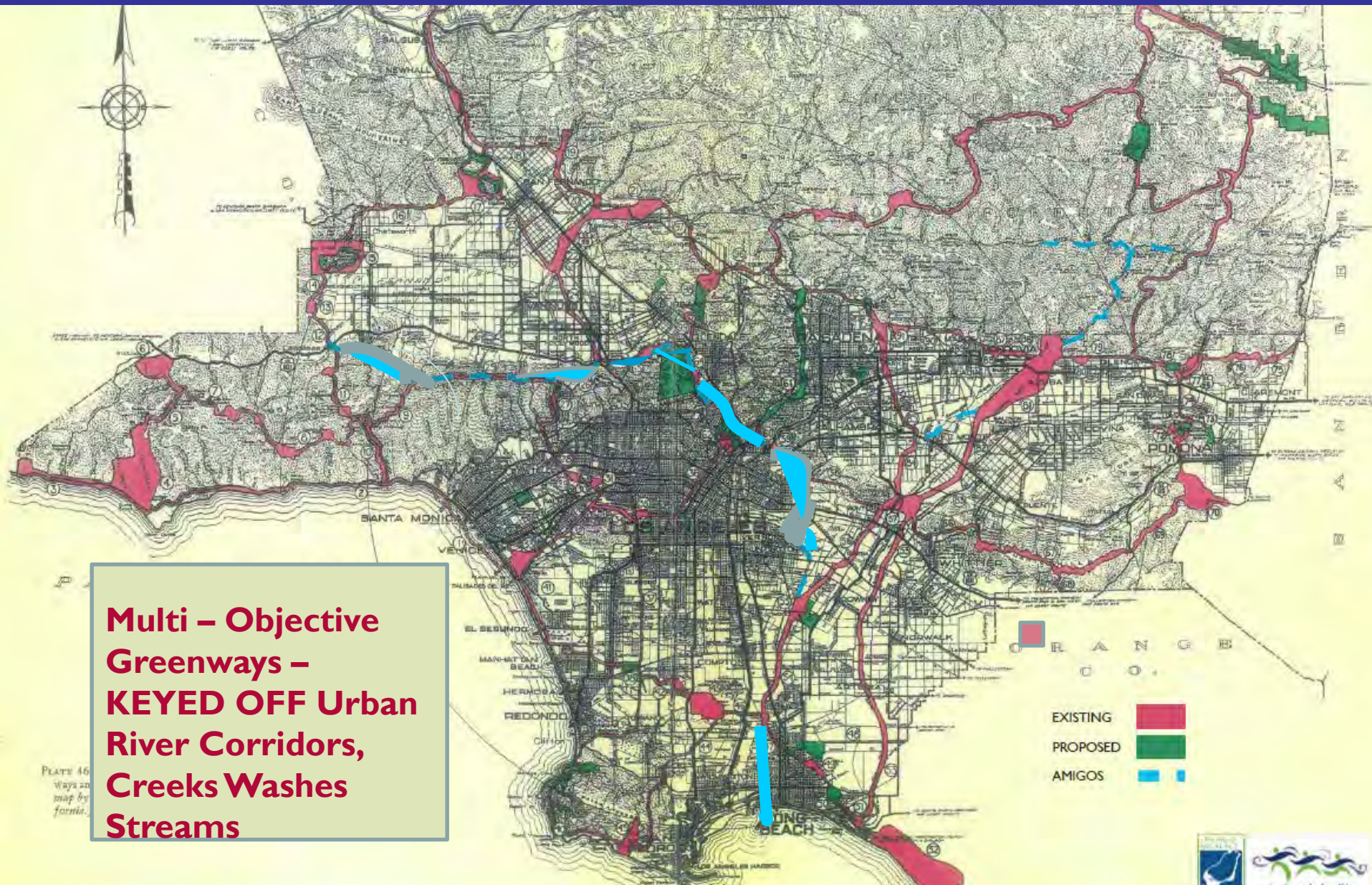
The Emerald Necklace plan moves urban Los Angeles county towards toward that great goal.”

Richard Louv

**Founder Children & Nature Network,
Journalist Author of eight books about the connections between
Family, Nature and Community
Nature Deficit Disorder**



AMIGOS DE LOS RIOS MISSION - BRING HISTORIC PLAN LIFE



1930 OLMSTED BARTHOLOMEW PLAN FOR LA BASIN

Emerald Necklace Greenways LOS ANGELES BASIN

Building an Effective Program: Lessons Learned

- Cultivating Champions
- Paths to Securing Funding – Aspirational Vision
- Developing Reportable Metrics

Emerald Necklace Greenways LOS ANGELES BASIN

Building an Effective Program: Lessons Learned

- Paths to Securing Funding –
 - Outline an Aspirational Vision,
 - Aggregate Champions – EN Accord
 - Harness Power of Innovative Grant Programs - Federal, State of CA, County
 - Embrace a “Quilt or Mosaic Approach”
 - Change Agents - Student Power \$50M in highly competitive grants

Los Angeles Basin – Major Rivers & Protected Lands

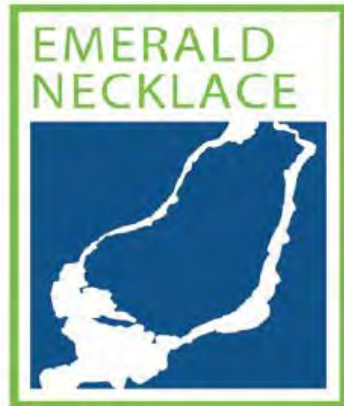


A TALE OF TWO RIVERS



Overview: East County Los Angeles Basin – Emerald Necklace Stakeholder Collaboration

Coalition Members



Unincorporated Areas

Hacienda Heights Homeowners Assoc.
Workman Mills Road Homeowners Assoc.
Park El Monte Improvement Assoc.

Environmental Organizations

Charro Equestrian Joint Council
Sierra Club

School Districts

Garvey School District
El Rancho Unified School District
Mountain View Unified School District
El Monte Union School District
El Monte City School District
West Covina Unified School District

Coalition Member Agencies

Azusa
Baldwin Park
Duarte
El Monte
Irwindale
Montebello
South El Monte
Whittier
Monrovia
La Puente
Bell
South Gate
San Gabriel
Downey

Gateway Authority

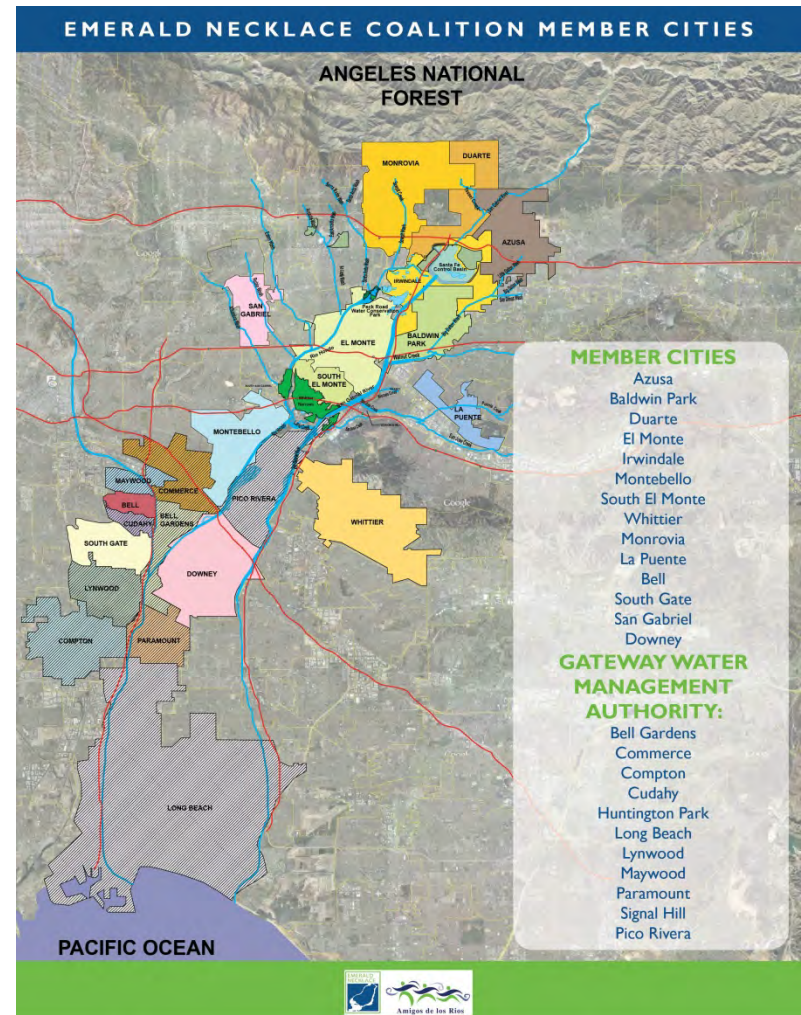
Bell Gardens
Commerce
Compton
Cudahy
Huntington Park
Long Beach
Lynwood
Maywood
Paramount
Signal Hill
Pico Rivera

County Agencies

Los Angeles County Board of Supervisors

State Agencies

State Rivers and Mountains Conservancy



EMERALD NECKLACE ACCORD

2012

THIS EMERALD NECKLACE ACCORD (hereinafter, "Emerald Necklace Accord") is entered into by and among municipalities and agencies of the San Gabriel Valley and Gateway Cities Region (individually, the "Emerald Necklace Agency," and, collectively, the Emerald Necklace Agencies) for the purpose of establishing a network of support, cooperation and collaboration among agencies of the San Gabriel Valley and Gateway Cities region to preserve the rivers and tributaries in this Region for recreational, open space and native habitat conservation/restoration purposes. In addition to municipalities, agencies will include water districts, utility companies, County agencies, conservancy agencies, and other relevant entities.

RECITALS

WHEREAS, the Emerald Necklace Agencies recognize that the increasingly urbanized development of the San Gabriel Valley and Gateway Cities Region has reduced the amount of available recreational space and open space for its residents;

WHEREAS, the Rio Hondo, San Gabriel, and Los Angeles Rivers and their tributaries (collectively, the "Watershed") are part of a significant ecological area that is home to a rich variety of plants and animals and provides a welcome sanctuary for the people who call this region home;

WHEREAS, the collaborative efforts of the Emerald Necklace Agencies to preserve the Watershed is urgently needed to protect this ever shrinking sanctuary for humans and wildlife.

NOW, THEREFORE, the Emerald Necklace Agencies agree as follows:

SECTION 1. The Emerald Necklace Agencies acknowledge and agree that:

(a) The Watershed is a precious and irreplaceable recreational and environmental resource

- (d) Fulfillment of this objective is best achieved by the cooperative efforts of agencies in the region;
- (e) The efforts of any one Emerald Necklace Agency to preserve the Watershed produces benefits for the residents of the San Gabriel Valley and Gateway Cities region as a whole by enhancing the overall beauty and value of this precious regional resource;
- (f) The Emerald Necklace Agencies' desire to demonstrate that preservation and development of open space in the Watershed is an important regional objective and will increase the likelihood of outside funding support for such efforts;
- (g) Preservation of open space in the Watershed enhances property values and the quality of life for the residents of the San Gabriel Valley and Gateway Cities region while also creating invaluable educational opportunities for the youth of the region;
- (h) Providing meaningful educational and training opportunities for youth living in the Emerald Necklace region is a critical component for the development and long term maintenance of the open space network.

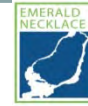
SECTION 2. The Emerald Necklace Agencies agree to review and consider requests for mutual support from one to another in the form of resolutions and correspondence voicing support for the efforts of any one of the Emerald Necklace Agencies to secure grant funding for the preservation/restoration/operation of any portion of the Watershed for purposes of multi-benefit projects fostering community health, passive and active recreation, environmental education, native habitat preservation, and open space interest.



SECTION 3. The Emerald Necklace Agencies agree to foster greater dialogue concerning ways in

Green Infrastructure RIVER PARKWAYS

**Climate Response
Resilient Communities**



**Open Space
Recreation Access**

**Sustainable
Transportation**

**Biodiversity
Habitat Corridors**

**Water Resources
Stormwater Mgt**

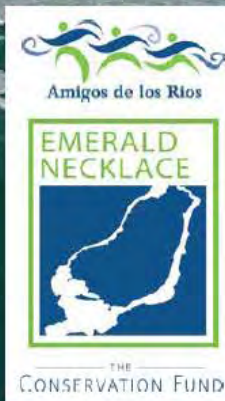


Sustainable Communities

EMERALD NECKLACE FOREST TO OCEAN EXPANDED VISION PLAN:

Towards a Common Vision

The Emerald Necklace Forest to Ocean Expanded Vision Plan: Towards a Common Vision
Funded by: The Safe Drinking Water, Water Quality and Supply, Flood Control, River and Coastal
Protection Bond Act of 2006 Proposition 84 and the State of California Strategic Growth Council



© 2014 Amigos de los Rios



Green Infrastructure Vision LA BASIN

REGIONAL GOALS

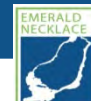
REGIONAL GOAL

- 1 Promote Active Transportation - Walking, Biking, and Alternative Commute Options
- 2 Create Functional and Multi-Purpose Natural (Green) and Built (Grey) Environment Networks
- 3 Improve Public Health by Expanding Access to Nature and Outdoor Recreation
- 4 Treat Water as a Multi-Benefit Amenity
- 5 Design and Build Communities Resilient to the Current and Projected Impacts of Climate Change
- 6 Enhance Regional Anchors for People and Wildlife
- 7 Support Environmental Awareness and Civil Engagement through Education, Outreach, and Cultural Heritage
- 8 Foster a Green Economy that Creates Jobs and Encourages Investment in Local Multi-Benefit Projects

COMMON VISION

- 1 An interconnected network of walking and biking trails, from forest to ocean
- 2 Interconnected and complementary green and grey infrastructure networks
- 3 A nature-based network of recreation facilities that promotes public health, social justice and equity
- 4 A water network that infiltrates groundwater, manages wet weather events and provides human enjoyment
- 5 Communities resilient to changing water supplies, climate extremes and sea level rise
- 6 A linked network of open space treasures from the Mountains to the Sea
- 7 A network of culturally aware and civically involved communities that support conservation, restoration and recreation
- 8 A robust and sustainable local economy that produces new economic opportunities around a growing green infrastructure

TOWARDS A COMMON VISION



We need to place a Human Face on Urban Infrastructure



Necessity of Green Infrastructure

Majority of the population live in urban areas:

•PUBLIC HEALTH

- Access to Recreation
- Social Equity/Environmental Justice
- Nature Deficit Disorder

•ENVIRONMENTAL HEALTH

- Air & Water Quality
- Greenhouse Gas Uptake
- Heat Island Mitigation

•COMPLIANCE FEDERAL & STATE MANDATES

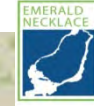
- Clean Water & Air Acts
- Ms4 Permits, SB375...

•BEAUTY...CULTURAL HERITAGE

•JOBS TRAINING & EDUCATION



Emerald Necklace Expanded Vision Map



USACE LA River
Restoration Area

San Gabriel
Emerald Necklace
Case Study

Our Backyard - Angeles National Forest



Support, Partners: Funders

PHILANTHROPY

- California Community Foundation
- Liberty Hill Foundation
- Annenberg Foundation
- United Latino Fund
- Resources Legacy Fund Foundation
- WildSpaces
- **National Fish & Wildlife Foundation**
- California Water Foundation

CORPORATE /PRIVATE SECTOR

- Southern Cal Edison/So Cal Gas
- Sempra
- Union Bank
- REI
- Sam's Club
- Ralph's Grocery Store Foundation

NATIONAL& STATEWIDE NON PROFITS

- Alliance for Community Trees
- Earthwatch
- Rails to Trails
- The Conservation Fund
- The Nature Conservancy
- California ReLeaf
- SGMF - Coalition

WATER AGENCIES

- Metropolitan Water District
- Upper San Gabriel Valley Municipal Water District

FEDERAL AGENCIES

- USDA Urban & Community Forestry
- US Department of Labor
- US Department of Interior - RTCA
- US EPA

STATE AGENCIES

- CalFire & Forestry
- California Department of Transportation/EEMP
- California Natural Resources Agency - California Strategic Growth Council "
- California State Department of Recreation & Parks
- San Gabriel Rivers and Mountains Conservancy (RMC)
- So California Air Quality Management District

COUNTY AGENCIES

- First 5 Los Angeles
- Los Angeles County - First District Wellness Center
- Los Angeles County - Regional Park and Open Space District

MUNICIPAL AGENCIES

- City of El Monte – Quimby
- City of South Gate











ACCESS TO NATURE MAP

This map depicts the existing natural areas within the Expanded Emerald Necklace. These valuable spaces are connected through the river network, linking the areas together.

Also depicted is the existing Santa Monica Mountains National Recreation Area (NRA) as well as the Rim of the Valley and San Gabriel Watershed and Mountains study areas, which are currently under consideration for national designation and whose proposed borders are shown here, a status that would enhance the management of protected outdoor space in Los Angeles County.

LEGEND

-  Emerald Necklace Greenway along Rivers/Washes/Creeks
-  Proposed San Gabriel Watershed & Mountains Permanent Protections
-  Proposed Rim of the Valley Corridor
-  Santa Monica Mountains National Recreation Area
-  Major Regional Anchors
-  Existing Trails
-  Beach Trails
-  Pacific Crest Trail



What does the community want?





NATIVE PLANT LANDSCAPES



WATER CONSERVATION



LEARNING SPACES



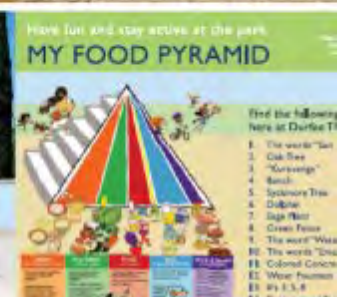
PLAY/EXERCISE AREAS



PEOPLE / CULTURE



HEALTH



BEAUTY



BEAUTY

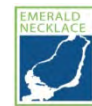
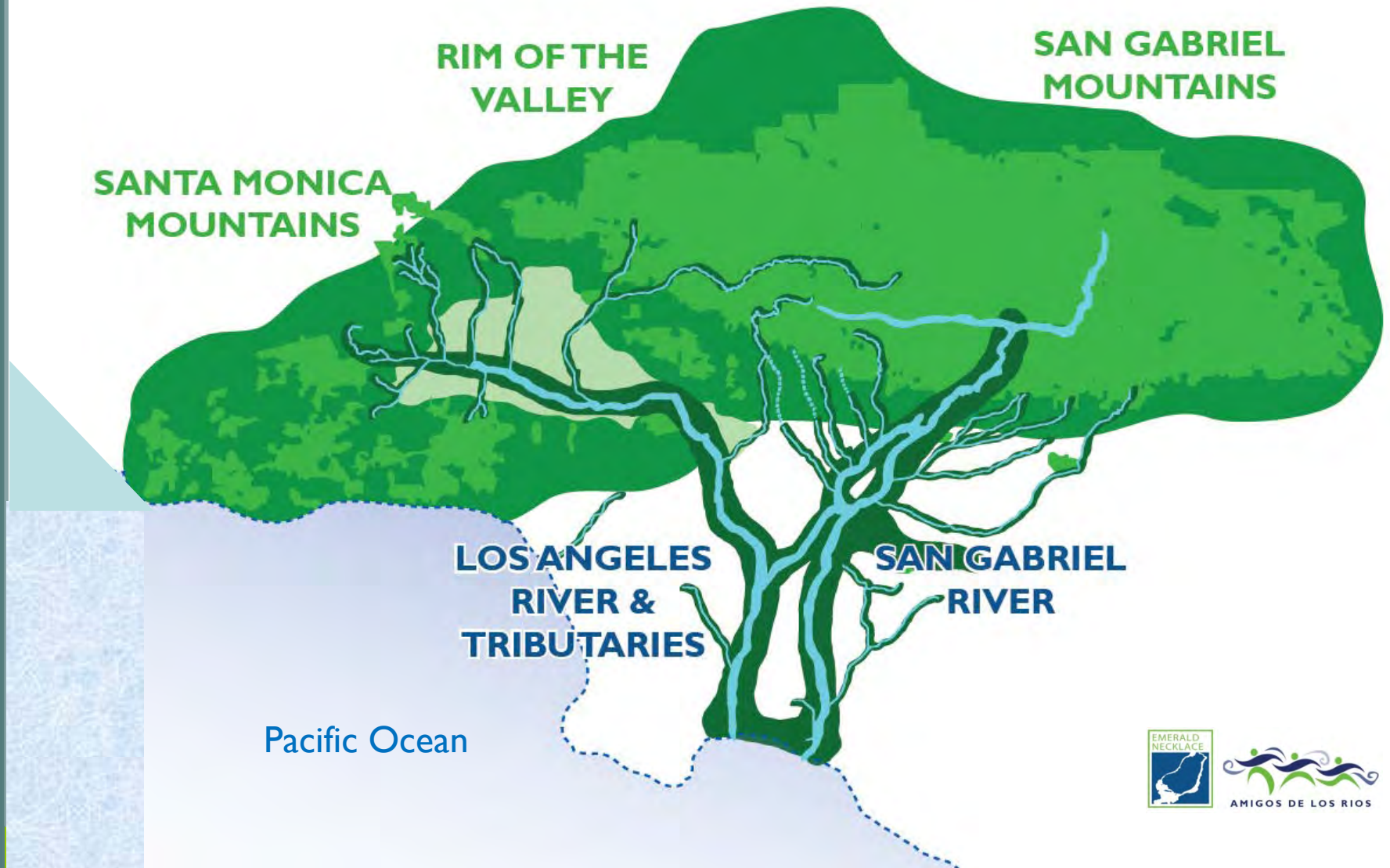


Vocabulary “DNA” of Projects

Languages of Los Angeles

1	AFRIKAANS	21	CHINESE (MANDARIN)	41	HAITIAN CREOLE	61	LITHUANIAN	81	PORTUGUESE	101	TAHITIAN
2	ALBANIAN	22	CORSICAN	42	HAWAIIAN	62	LOW SAXON	82	ROMANI	102	TAMIL
3	ALSATIAN	23	CROATIAN	43	HEBREW	63	LUXEMBOURGEOIS	83	ROMANIAN	103	TATAR
4	APACHE	24	CZECH	44	HINDI	64	MACEDONIAN	84	RUSSIAN	104	TELUGU
5	ARABIC	25	DANISH	45	HUNGARIAN	65	MALAGASY	85	SARDINIAN	105	THAI
6	ARMENIAN	26	DUTCH	46	ICELANDIC	66	MALAY	86	SCOTTISH GAELIC	106	TURKISH
7	AZERI	27	ENGLISH	47	INDONESIAN	67	MALAYALAM	87	SERBIAN	107	UDMURT
8	BAMBARA	28	ESPERANTO	48	IRISH GAELIC	68	MALTESE	88	SESOTHO	108	UKRAINIAN
9	BASQUE	29	ESTONIAN	49	ITALIAN	69	MAORI	89	SHIMAORE	109	URDU
10	BELARUSIAN	30	FAROESE	50	JAPANESE	70	MAPUCHE (MAPUDUNGUN)	90	SHONA	110	VIETNAMESE
11	BENGALI	31	FINNISH	51	KABYLIAN	71	MARATHI	91	SINDHI	111	WALOON
12	BERBER	32	FRENCH	52	KANNADA	72	MONGOLIAN	92	SINHALA	112	WELSH
13	BOBO	33	FRISIAN	53	KHMER	73	MORÉ	93	SLOVAK	113	WEST INDIAN CREOLE
14	BOSNIAN	34	FRIULAN	54	KINYARWANDA	74	NORWEGIAN	94	SLOVENIAN	114	XHOSA
15	BRETON	35	GALICIAN	55	KOREAN	75	OCCITAN	95	SOBOTA	115	YIDDISH
16	BULGARIAN	36	GALLO	56	KURDISH	76	ORIYA	96	SONINKÉ	116	YORUBA
17	BURMESE	37	GEORGIAN	57	LAO	77	OSSETIAN	97	SPANISH	117	ZULU
18	CATALAN	38	GERMAN	58	LATIN	78	PAPIAMENTU	98	SWAHILI		
19	CHECHEN	39	GREEK	59	LIGURIAN	79	PERSIAN	99	SWEDISH		
20	CHEROKEE	40	GUARANÍ	60	LINGALA	80	POLISH	100	TAGALOG		

Los Angeles Basin – “Broccoli Stalk”



EMERALD NECKLACE Green Infrastructure

Emerald Necklace Greenways LOS ANGELES BASIN

Building an Effective Program: Lessons Learned

Developing Reportable Metrics – “At various scales” –

- **Metropolitan Region - APA Award Winning Plan,**
- **National Monument/National Recreation Area**
- **# Pilot Projects completed**
- **# of Emerald Necklace Stewards**
- **# Students**
- **# Coalition Agencies - Emerald Necklace Accord**
- **\$ Competitive grant funds leveraged**
- **Culturally relevant multi objective projects**
- **Acres of land protected/ Restored**

URBAN RIVER GREENWAY



**PECK ROAD WATER
CONSERVATION PARK**

**VETERANS MEMORIAL
PARK**



RIO VISTA PARK

LASHBROOK PARK



GIBSON MARIPOSA PARK

**DURFEE THOMPSON
PARK**

EMERALD NECKLACE

Emerald Necklace Community Project Examples

San Gabriel Mountains Visitor Reception Center

- Excess land Municipal Utility

Nature Trail Exercise Area – Lashbrook Park

- Flood Control Right of Way /Army Corps of Engineers Rio Hondo River

Community Park Barrio History Rio Vista

- Cultural Heritage retrofit of park

Community Park – Butterfly Theme

- Former precious metals smelting factory

Nature Discovery Area – Water Conservation Park – Bird Sanctuary

- Former quarry Flood Control District

Multi-benefit School Campuses & Parks along river greenway

- Joint-Use School Partnerships

Emerald Necklace Greenways LOS ANGELES BASIN

mise-en-abyme
the representation
of the whole
work embedded
in the work



Amigos de los Rios

EMERALD NECKLACE



- Bike Path
- Bike Path (Proposed)
- Equestrian Trail
- Equestrian Trail (Proposed)

- Ballpark
- Barbeque
- Basketball
- Bike Racks
- Birds
- Bridge
- Cultural Resource
- Drinking Fountain
- Educational Signage
- Exercise Equipment
- Fishing
- Native Plants
- Nature Center
- Outdoor Classroom
- Overlook/Views
- Park
- Park (Proposed)
- Picnic
- Play Equipment
- Recreation Center
- Restrooms
- Shade Structure
- Splash Pad
- Trail
- Underpass
- Water

© 2004 Amigos de los Rios







October 2014 San Gabriel Mountains National Monument





Active Transit: "Greenway Network"

Efficient Mobility that is Safe, Equitable and Improves Urban Quality of Life

The LA County Metro "Greenway Network" is a plan for a comprehensive regional active transportation "super highway" network composed of over 500 miles of protected pedestrian and bicycle paths. The "Greenway Network" is also consistent with and supported by the 2016 SCAG RTP/SCS.

Utilizing public right-of-ways along waterway corridors, abandoned rail lines, and utility corridors, the network will build upon popular existing active transportation paths such as the Los Angeles, San Gabriel, and Rio Hondo River Trails. It will create a comfortable, cohesive, off-street network of paths appropriate for county residents of all ages and abilities, connecting existing and proposed Metro lines to facilitate the use of active and public transportation.

How will it be funded?

The County Department of Public Works estimates that the average cost of this network is \$1M and \$3M per mile. Given the many co-benefits of this project, dedicated funding should be included in the planned 2016 transportation ballot measure and prioritized for completion within ten years.



Map Produced by Amigos de los Rios 2014

key goals & benefits



Productivity – Enhance mobility and system efficiency.

Safety – Reduce serious and fatal collisions.

Health – Promote physical activity.

Environment – Facilitate the use of truly zero-emission transportation modes.

First & Last Mile Connections – Enhance connectivity and transit use.

Equity – Improve access to safe routes to school, work, and open space.

Economy – Stimulate economic development.

Air – Reduce user exposure to localized air pollution.

Jobs – Maximize job creation: active transportation projects create 46% more construction jobs than auto infrastructure projects.

For additional information about the LA County Metro Greenway Network Plan, visit www.envirometro.org/priorities



Amigos de los Rios

Transit to Trails: Access to Parks and Open Space

Los Angeles County Mobility Network

The San Gabriel Mountains, Rim of the Valley, Santa Monica Mountains as well as the Pacific Ocean characterize our region locally, nationally and internationally. We need a comprehensive public transit network to connect residents and visitors to our natural areas and publicly managed lands - for public equity and for a flourishing economy.

Parks and open spaces are critical components to maintaining a high quality of life for urban residents, especially those living in built-out environments such as the Los Angeles Basin. The beaches, mountains and rivers are this region's natural and cultural heritage. They provide economic benefit in the form of attraction and retention of individual businesses and entire industries. Access to these natural areas improves health and quality of life, and should not be exclusive to people with cars; comprehensive and affordable public transit options should be available, too.



key goals & outcomes

- Increase safe and equitable access to parks, recreation facilities and open space.
- Expand sustainable transit networks to connect to trails, parks and recreation areas.
- Bolster outdoor recreation opportunities for underserved communities, including low-income communities and communities of color.
- Protect natural lands and biodiversity through well-designed access.
- Improve public health.
- Build convergent, efficient multi-objective infrastructure.
- Support the outdoor recreation and tourism economy.
- Align with biodiversity & natural resources protection plans and policies.

For additional information about the LA County Metro Greenway Network Plan, visit www.envirometro.org/priorities





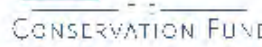
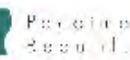
COALITION MEMBERS

The EnviroMetro Coalition of Los Angeles County is united in supporting a transportation sales tax measure and long range transportation plan update that will reduce air pollution and greenhouse gas emissions, enhance equity and access to public space, improve public health, and develop a sustainable transportation system that incorporates green infrastructure to protect and enhance water resources, parks, and biodiversity. Notably we request the transformation of existing, unused rights-of-way along County rivers and flood control channels into an Active Transit "Super Highway" and the development of a comprehensive "Transit to Trails" network providing transit access to regional parks and open space.

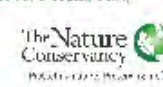


LOS ANGELES COUNTY PUBLIC WORKS
SUSTAINABLE & HEALTHY TRANSPORTATION

EnviroMetro



Los Angeles Regional Collaboration for Climate Action and Sustainability



EnviroMetro is a coalition of over 60 diverse organizations with a combined constituency of over 480,000 voters who care deeply about the role transportation plays in shaping the health of our communities and environment.



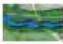








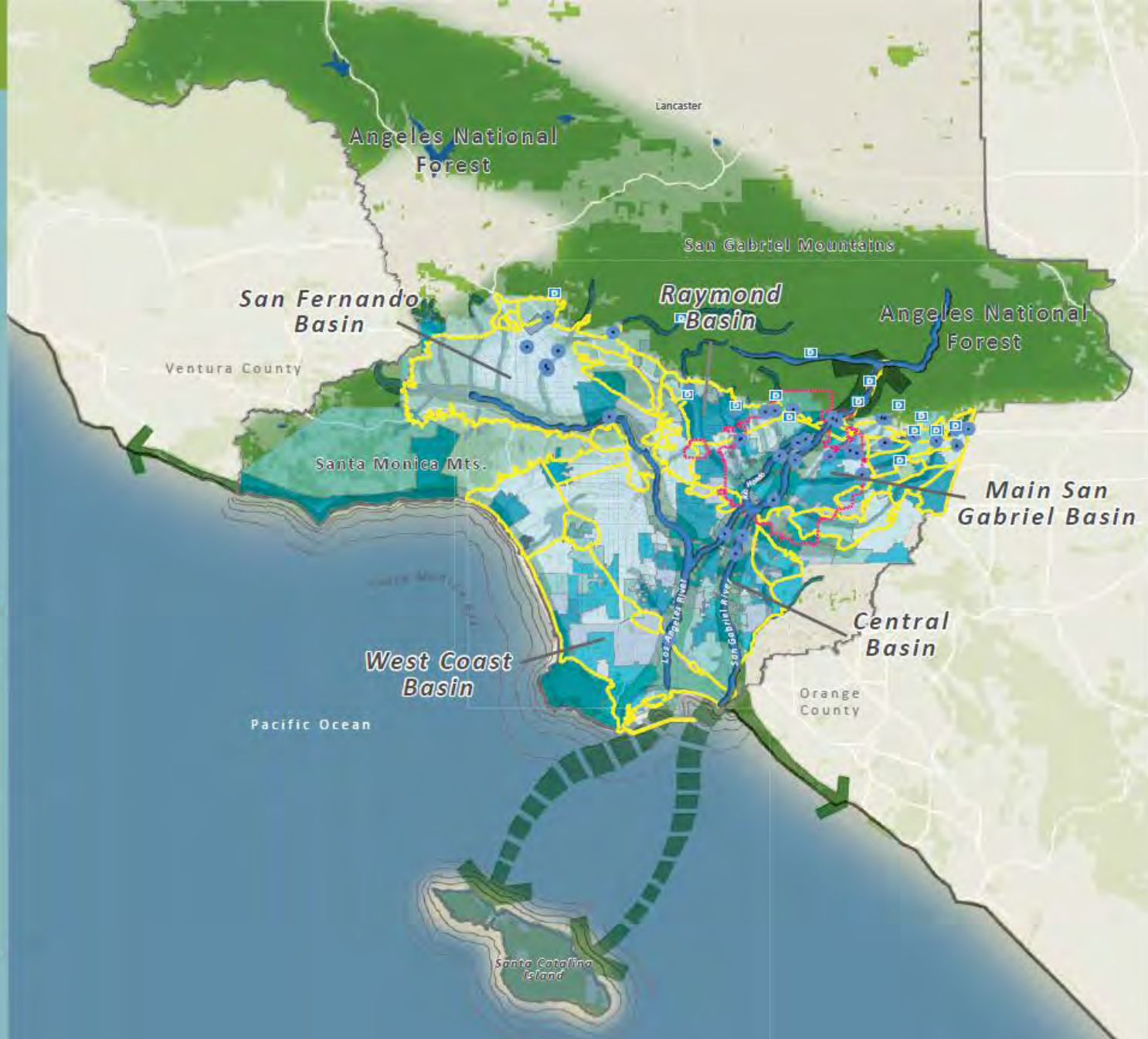
WATER BENEFITS MAP

Water resource management in Los Angeles County is rife with complexity, with a multitude of actors involved in the transportation and distribution of the region's water supply. Of the imported water that supports two-thirds of the county's demand, 40% comes from the Colorado River Aqueduct and 60% comes from the State Water Project.

Recognizing water as a multi-benefit amenity throughout the Expanded Emerald Necklace and implementing the recommendations of the plans captured in this document can result in many positive outcomes, including but not limited to: increased pervious surfaces, increased water recharge, and improved water quality and groundwater infiltration.

LEGEND

-  Emerald Necklace Greenway along Rivers/Washes/Creeks
-  Various Water Purveyors
-  Groundwater Basins
-  Upper San Gabriel Municipal Water District Divisions
-  Beach Trails
-  Spreading Basins
-  Dams



“The Emerald Necklace Expanded Vision plan is a visionary framework to link important LA area watersheds and the communities they touch....a regional approach to providing much needed open space in some of our most park poor neighborhoods.”

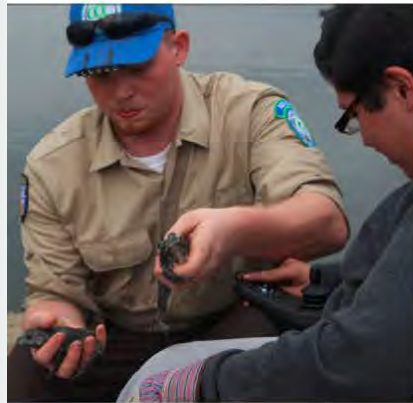
Eric Garcetti,

Mayor of Los Angeles



I Naturalist Project for Each Site

FACEBOOK



Emerald Necklace Group - Amigos De Los Rios
 Posted by Brenda Kyle [?] February 9 · Edited · 🌐

A California Conservation Corps member helps us pull bullfrogs out of the water at Peck Water Conservation Park. Bullfrogs are an invasive species in Southern California and cause ecological harm. For more info click here <http://bit.ly/1zDejVM>

📷 Tag Photo 📍 Add Location ✎ Edit

Like · Comment · Share

Write a comment... 📷 🌐



Emerald Necklace Group - Amigos De Los Rios
 Posted by Claire Robinson [?] May 29, 2014 · 🌐

Playing on the trout - at Maywood Riverfront Park

📷 Tag Photo 📍 Add Location ✎ Edit

Like · Comment · Share

Write a comment... 📷 🌐



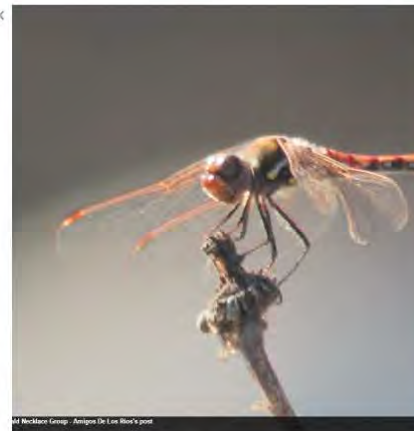
Emerald Necklace Group - Amigos De Los Rios
 Posted by Claire Robinson [?] May 5, 2014 · 🌐

Bell's Vireo (Endangered species) - at Peck Road Water Conservation Park.

📷 Tag Photo 📍 Add Location ✎ Edit

Like · Comment · Share

Write a comment... 📷 🌐



Emerald Necklace Group - Amigos De Los Rios
 Posted by Marian Coensgen [?] October 6, 2014 · Edited · 🌐

Dragonflies eat mosquito. Show them some love! - at Peck Road Water Conservation Park.

📷 Tag Photo 📍 Add Location ✎ Edit

Like · Comment · Share

Write a comment... 📷 🌐



Emerald Necklace Group - Amigos De Los Rios
 Posted by Claire Robinson [?] June 2, 2014 · Edited · 🌐

Many thanks to Boy Scouts of America for inviting us to their expo - at Rosebowl.

📷 Tag Photo 📍 Add Location ✎ Edit

Like · Comment · Share



Emerald Necklace Group - Amigos De Los Rios
 Posted by Marian Coensgen [?] August 23, 2014 · Edited · 🌐

#natureisforeveryone - at Peck Road Water Conservation Park.

📷 Tag Photo 📍 Add Location ✎ Edit

Like · Comment · Share

Lashbrook Park Community Work Days



EMERALD NECKLACE STEWARDSHIP

2015 VOLUNTEER EVENTS NATIVE PLANT CARE EVENTS AT SCHOOLS & PARKS!



UPCOMING EVENTS

9:00 AM - 12:00 PM



SPEND SOME TIME OUTDOORS!

We will be caring for native plant & habitat restoration areas and for park amenities & interpretive signage. We will supply the materials, work gloves & tools.

ALL YOU NEED TO BRING IS ELBOW GREASE!

SUPPORT THE EMERALD NECKLACE!

APRIL 4, 2015



Peck Water Conservation Park
5401 N. Peck Rd. Arcadia, CA 91006



APRIL 11, 2015



Hollydale Park
5400 Monroe Ave, South Gate, CA 90280

APRIL 18, 2015



Twin Lakes Elementary
3900 Gilman Rd. El Monte, CA 91732

APRIL 25, 2015



Madrid Middle School
3300 Gilman Rd. El Monte, CA 91732

MAY 2, 2015



Peck Water Conservation Park
5401 N. Peck Rd. Arcadia, CA 91006

MAY 9, 2015



La Primaria Elementary
4220 Gilman Rd. El Monte, CA 91732

MAY 16, 2015



City Terrace Park
1126 N Hazard Ave, Los Angeles, CA 90063

MAY 23, 2015



Rio Vista
4275 Ranger Ave, El Monte, CA 91731

MAY 30, 2015



Salazar Park
3864 Whittier Blvd, Los Angeles, CA 90023

JUNE 6, 2015



Peck Water Conservation Park
5401 N. Peck Rd. Arcadia, CA 91006

JUNE 13, 2015



Salazar Park - Ribbon Cutting/Work Day
3864 Whittier Blvd, Los Angeles, CA 90023

JUNE 20, 2015



City Terrace Park - Ribbon Cutting/Work Day
1126 N Hazard Ave, Los Angeles, CA 90063

JUNE 27, 2015



Madrid Middle School
3300 Gilman Rd. El Monte, CA 91732



= Tree Planting



= Shrub Planting



= Mulching

Together we can make a difference
We look forward to seeing you there! Please spread the word!

Event sponsored by:



SIGN UP to RSVP, receive updates and additional volunteer days by e-mailing:
volunteer@amigosdelosrios.org or visit us at www.amigosdelosrios.org



Like us on Facebook www.facebook.com/emeraldnecklace



Follow us on Twitter @amigosrios



The Green Collar Environmental Certification Program

WORKING IN THE WATERSHED,
be part of the



For more information, please
contact us at:
claire@amigosdelosrios.org or
by phone at (626) 798-2833

Applications are available online at:
www.amigosdelosrios.org

Fill out an application and mail to:

Amigos de los Rios
3244 Santa Anita Ave
Altadena, CA 91001

Offers exposure to
a broad spectrum of
professions in the
environmental sector

TRAINING PROVIDED IN
Watershed Management
Urban Planning
Park Design
Public Art
Park Construction
Community Outreach
Park Maintenance
Computer Training

* LIMITED AVAILABILITY
Information will be provided on
continuing education and job
opportunity in the environmental sector

© Amigos de los Rios 2005, all rights reserved



The Green Collar Program
is funded with a grant from the
United States Department of Labor,
Priority Cluster for job training and
employment of veterans.



Supported by
Southern California Edison
Metropolitan Water District
Congresswoman Jilda Colla
Upper San Gabriel Valley Water District

The Green Collar Environmental Certification Program



Youth Training



A special thanks to the following California Conservation Corps, Los Angeles Conservation Corps, and San Gabriel Valley Conservation Corps Members who have built Lashbrook Park for the benefit of current and future generations:

Adam Dominguez
Adrian Amecuz
Adriana Castaneda
Albert Dukes
Alejandro Corona
Alex Castaneda
Alfredo Gonzalez
Andres Garcia
Andres Arellano

Andres Garcia
Angel Oyola
Anthony Delgado
Anthony Randolph
Arnett Taylor Jr.
Ayla Martinez
Brandaniqua Taylor
Brian Perkins
Cameron Green
Captain Reed
Cesar Cazares

Chris Hernandez
Christian Flores
Christian Pena
Christina Chavez
Christopher Zamora
Daniel Gomez
Daniel Loyola
Daniel Perez
Danny Macias
David Bonilla
Eric Garcia

Eric Guerrero
Erika Salazar
Fabian Bultrago
Fernando Gonzalez
Fernando Ruiz
Garry Snyder
Gilbert Duarte
Gonzalo Olaguez
Guillermo Lopez
Heather Rust

Hilario Ibarra
Jamel Davis
James Martinez
Jeremy Mejia
Javier Gallardo
Jayson Walker
Jessica Jackson
Jessica Vega
Jesus Zapata
Jimmy Falcon
Joe Barajas

John Salmon
Jonathan Brown
Jose Duran
Jose Gonzalez
Jose Lopez
Jose Ochoa
Joseph Garcia
Joseph Garcia Jr.
Jovani Vences
Juan Flores
Kanesha Arnold

Larry Menchaca
Levell Newmann
Lisa May
Luis Aguilar
Manuel Duran
Margie Chavez
Martha Araya
Marianne Jaramillo
Matthew Hudson
Michael Garcia
Michael Sanchez

Nancy Flores Gomez
Nicholas Fair
Nicole Banuelos
Octavious Retic II
Peter Thammarangsy
Philip Zazueta
Rachel Martinez
Regina Rios
Releise Flores
Rene Aguilar
Richard Navarro

Ricky Trujillo II
Rodney Rich Jr.
Ronald Escandon
Ruben Osuna
Salvador Estrada
Saran Chim
Sergio Fuentes
Silvia Magaña
Sody Perez
Stephan Dolan
Stephanie Halth

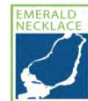
Terrill Hayes
Terron Redmond
Thomas Pantoja
Timothy Sidor
Ulises Gallegos
Wilfredo Santiago
William Ordoñez



“For thousands of years, rivers of Los Angeles held perennial flow of clean water, bounded upstream by willows & cottonwoods, and downstream going underground or panning out into the LA basin in hot summer months.

Restoration of three rivers and their environs is central to a deeper need: the creation of a livable city in which all people can sustain families and pursue their dreams.”

Paul Hawken, Founder of the Natural Capital Institute,
author *The Ecology of Commerce*

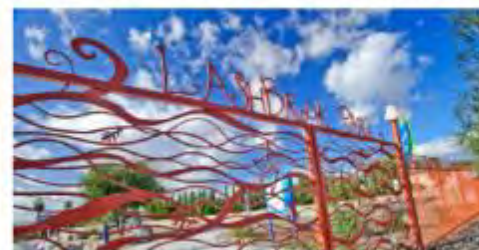


Rio Hondo



Rio Hondo Flood Control Channel

BEFORE

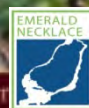
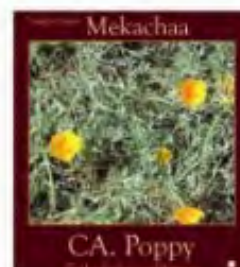
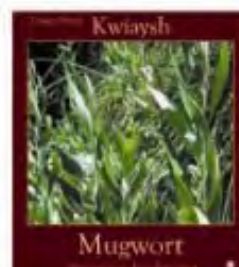
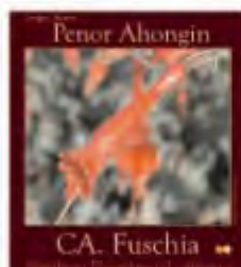
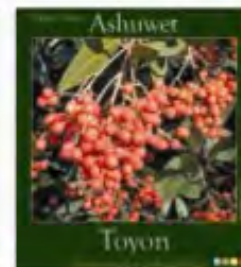
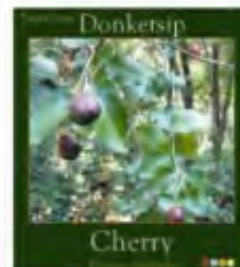
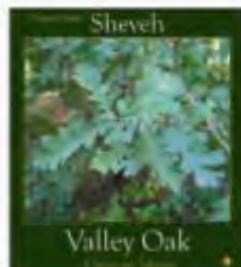
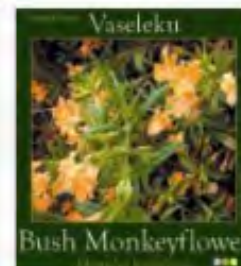
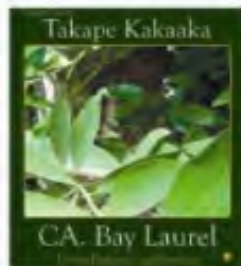
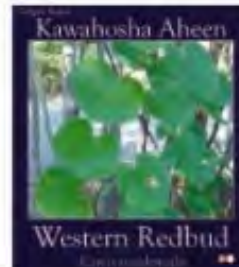
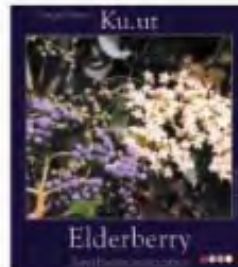
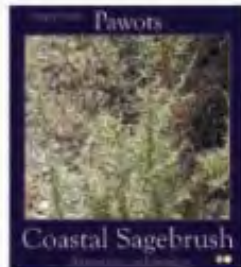


LASHBROOK PARK



Native Plants at LASHBROOK PARK

Lashbrook Park
Emerald Necklace
Ria Honda/Los Angeles River





Tongva Gabrielino Tribe



Life along the River TONGVA



The river was a source of food and water. The woman is gathering duck eggs.



Acorns gathered. The men are putting down the acorns and the women are taking the acorns to gather berries.

The Tongva/Gabrielino lived for thousands of years in the area that is now covered by Los Angeles County and parts of Orange County. They started each day with a prayer to bring out the sun and basked in the waters of the river. Food was abundant and men hunted while fishing and hunting, women sang while they gathered plants, seeds, and shell fish, and children laughed while playing in the river. The sound of Shamans chanting in their sacred house was ever present. If you listen closely, you can still hear the Shamans' chants in the wind and their whispers in the water.

Tongva/Gabrielino hunted and fished the sea in great red wood and pine bark canoes called Te-out and fished along the shore using large tule canoes. They also crossed to the island areas to trade with their fellow Tongva who chose to inhabit the island areas.

They spent the months from spring to fall gathering food and preparing it for the rest of the year. They also gathered reeds and

grass to make the different items they needed for daily life. Their houses were dome shaped, and were made by bending and tying willow branches into the shape needed and river reeds and grasses were then attached at chattering. The domes had one entrance and a "smoke hole" in the ceiling to let out the smoke from the small fire that was used for light and for keeping warm.

Plants and animals could not be collected or hunted unless prayers were made to ask the permission of the plant and animal people. Songs were sung and melodies were hummed to ensure the goodness of the food and to maintain the all important balance and connection in nature.

Tongva/Gabrielino, through their culture and rituals, have marked an important era in the history of this area and their significance will forever be present.

Hunting Tools and Artifacts



Small, round, flat object



Small, round, flat object



Small, round, flat object



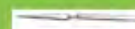
Small, round, flat object



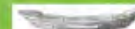
Small, round, flat object



Long, thin, curved object



Long, thin, curved object



Long, thin, curved object

Tongva Homes KICH (Keesh)

San Juan Park
Tongva Remains
Preservation Project



One of the great Tongva Myths describes the origin of the Kich. One of the seven giants who held up the world was TEHNOVET NEKICH. This giant wore a wonderful woven cap that CHEHOOT, the Earth Mother had made for him because she loved him so much. When TEHNOVET NEKICH realized that people needed to have shelter from the sun and a warm place to go at night, he took off the wonderful woven cap and placed on the ground and invited people inside. This became the first Kich, or Tongva home. Birds and squirrels came and made an opening for people could enter the giant's cap and dwell in their new shelter.

The decorated dome structure exemplifies the typical Tongva Kich (home). Family and friends helped build these structures made from willow and other natural construction materials. The homes were built to be thirty five feet in diameter and twelve to fourteen feet high. Extended family members shared sections of the homes. One could come into the home by crouching through a low entrance that faced east. Movement within the home was counter clockwise in reference to the cycle of the sun.

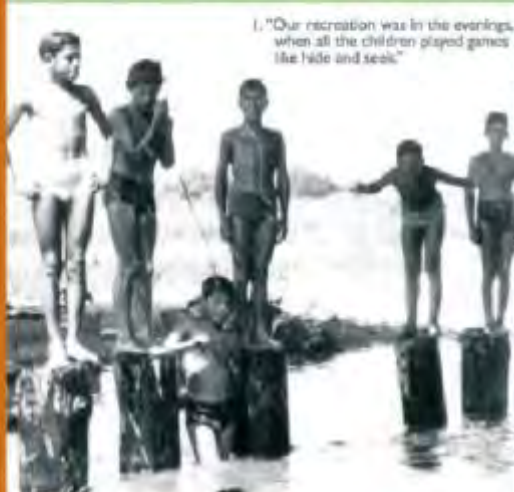


> lashbrook park





"We didn't care for playgrounds...the **RIVER** was better!"



1. "Our recreation was in the evenings, when all the children played games like hide and seek."



2. "Our playground was the riverbed and all open space around Hickory Camp."



3. "We were all there, family, friends, and I wish those times were still here."

5. "Every celebration, every funeral, every event, we all knew that it was for everyone."

6. "We went to school barefoot."

© 2006 Amigos de los Rios. Photo © La Raza's Historical Society. For more information on the history of the Rio Hondo, visit www.la-razas-history.com.

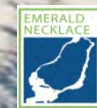
7. "Residents of the barrios were sons and daughters of the Rio Hondo. They played in it and depended on it."

Authors' Quotes:

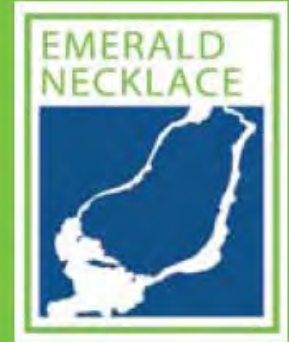
- 1, 3, 4, 5, and 6: Richard (Hector) Flores - Former resident of Hickory Camp.
- 2: Dr. Ben Casarez - Former resident of Hickory Camp.
- 7: Sergio Jimenez - Historian and grandson of Hickory Camp residents.



CELEBRATE Natural & Cultural HISTORY



Emerald Necklace Green Infrastructure | Los Angeles County



RIO VISTA PARK & TRAIL

-A PARK RETROFIT, EL MONTE



www.amigosdelosrios.org | 908 E Altadena Dr | Altadena, CA 91001 | t:[626] 791.1611 | f:[626] 791.1771



ACRES: 4.2

FUNDER: San Gabriel and Lower Los Angeles Rivers and Mountains Conservancy, Proposition A Supervisor Gloria Molina, Land and Water Conservation Funds Recreation Trail Grant and City of El Monte

DATE/COST: 2008 / \$2.3 million

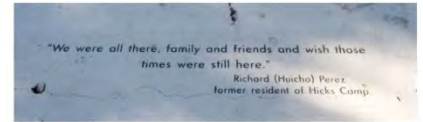
PROJECT TEAM: Amigos with VCA Engineering, Bob Perry, Bret Goldstone and Terra Form Constuction, SGVCC, LACC and CCC



>multi-benefit park

AMIGOS DE LOS RIOS - EMERALD NECKLACE GROUP

BEFORE

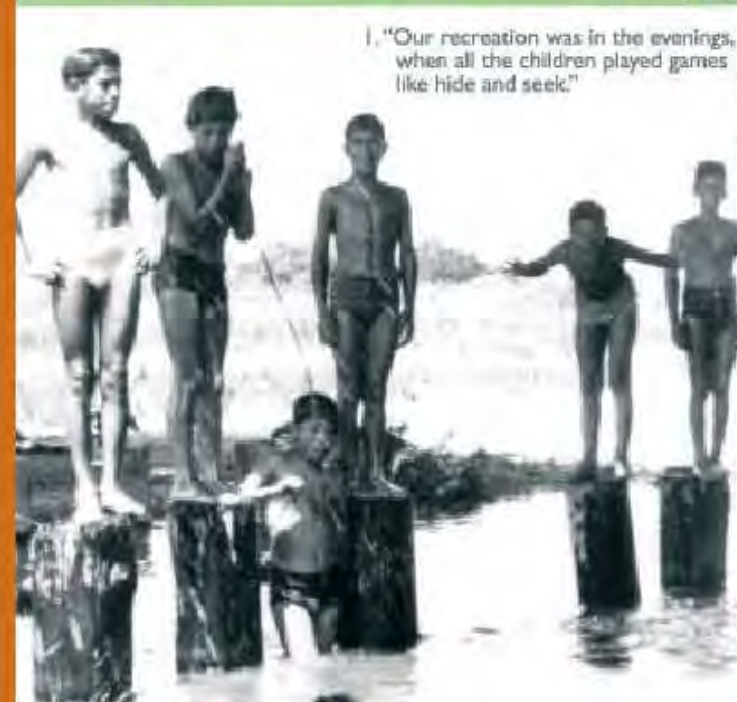


RIO VISTA PARK AND TRAIL





"We didn't care for playgrounds...the **RIVER** was better!"



1. "Our recreation was in the evenings, when all the children played games like hide and seek."



2. "Our playground was the riverbed and all open space around Hicks Camp."

4. "We didn't have much, the roads were dirt, some homes were made of cardboard, but we were all one family."



3. "We were all there, family, friends, and I wish those times were still here."

5. "Every celebration, every funeral, every event, we all knew that it was for everyone."

6. "We..."

7. "Residents of the barrios were sons and daughters of the Rio Hondo. They played in it and depended on it."

Author's Quotes:

- 1, 3, 4, 5, and 6: Richard (Hucha) Perez - former resident of Hicks Camp.
- 2: Dr. Ben Campos - former resident of Hicks Camp.
- 7: Sergio Jimenez - Historian and grandson of Hicks Camp residents.

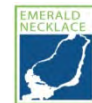
CELEBRATE Natural & Cultural HISTORY

Education

“Emerald Necklace underscores need for educators to support creation of next generation of environmental stewards and importance of integrating conservation values into urban education programs from pre-school through high school.”

Jeff Seymour,

Superintendent, Ex Officio El Monte City
School District





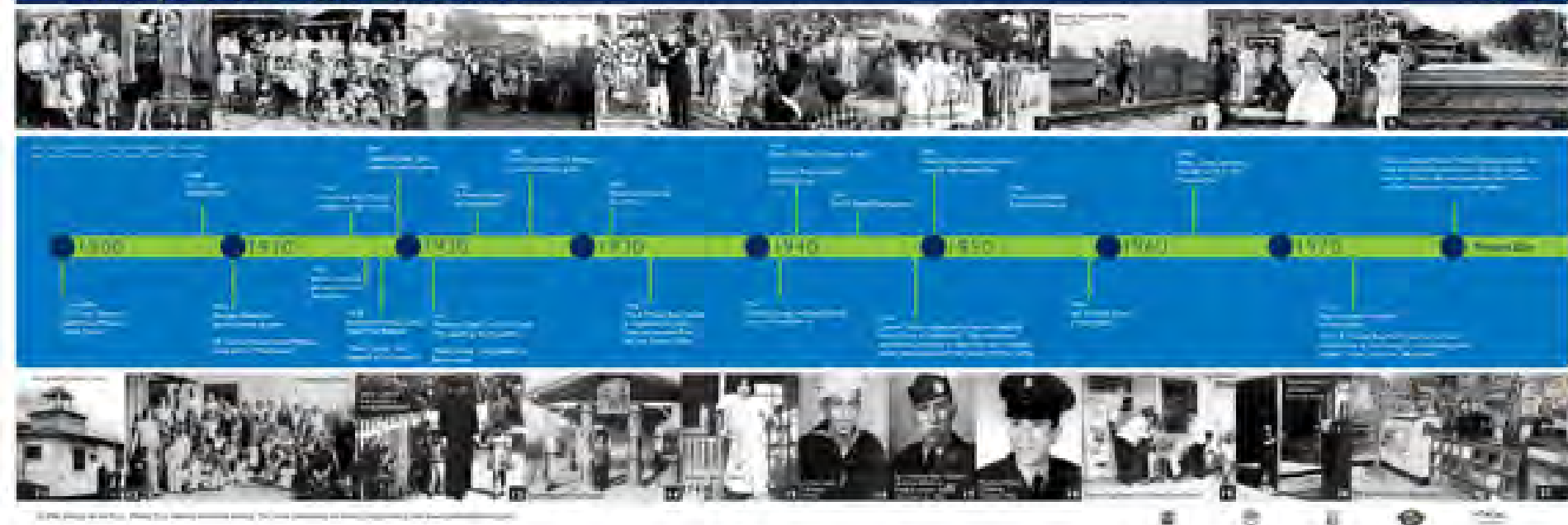
Map of Robert Hicks agricultural farm workers camp



La Historia Society

[illegible]

The History of HICKS CAMP



Hicks Camp and the El Monte BERRY STRIKE

Rio Vista Park
Emerald Necklace
Rio Hondo/Los Angeles River



Pickers from Las Flores Camp

"I started working in the fields when I was seven years old...The season started in June with our route beginning in Salinas/Castroville to bunch carrots, then San Jose to pick grapes, then Livingston to pick grapes, then Corcoran to pick cotton, then Moorpark/Sim to pick walnuts, and finally back to El Monte...Our working days were sunrise to sundown. We would take a half hour break in the middle of the day to eat. Every day was a working day. Weekends and holidays were unheard of...but I'm thankful that I learned to work hard, to appreciate what I have around me, but what I mostly remember is that we were all there, family and friends, and I wish those times were still here."

Richard "Nicasio" Perez, "Memories of My Life at Hicks Camp", La Historia Cuernavaca, vol. 2, issue 1, Spring 2004



Zenaida (Sadie) Castro
One of the Berry Strike Leaders
May 16, 1934



Angie Perez working in the fields
San Jose
Circa 1934

In May 1933, years before developers paved over the strawberry fields that were part of the City of El Monte, several thousand pickers went on strike, protesting their low wages of 9 cents an hour. One of their leaders was Zenaida (Sadie) Castro, a feisty Mexican American. When she wasn't holding off the union busters, she was cooking rice and beans for the strikers. As news of the strike spread, Mexican and Japanese immigrant workers in the celery and onion fields of Venice, Culver City and Santa Monica demanded higher wages. Within a few months, pickers' wages were increased to 20 cents an hour.

Cecilia Ramirez
LA Times

Making a difference

LEADERS

Rio Vista Park
Emerald Necklace
Rio Hondo/Los Angeles River



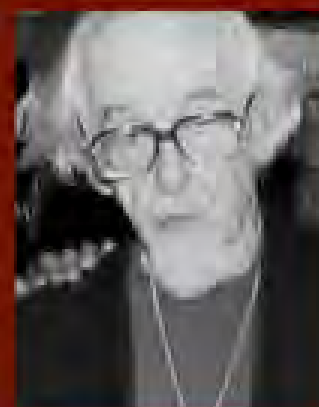
Lexington School Classes, Hicks Camp
Circa 1930s

The Lexington School was the first and only school in El Monte up until 1923. At this time, a second school, Columbia, was built to accommodate the increased student population in the city. White students were permitted to attend the new school, while students of Mexican-American and Japanese descent were confined to the old Lexington School. This was the beginning of school segregation in El Monte. Segregation existed in housing and public places as well. Segregation was rationalized with the argument of language barriers



Lexington School Classes, Hicks Camp
Circa 1940s

between the Spanish speaking and English speaking students, although the Mexican and Japanese students spoke English. In 1942, when Reverend Dwight Ramage and his family moved to El Monte, he joined Father Coffield of the Hicks Camp Catholic Church, in a quest to desegregate the local schools. A large community meeting was held at Columbia School in 1945 in order to address desegregation of the students. Shortly afterwards, El Monte Schools were integrated and have been ever since.



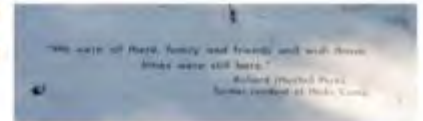
Red Ramage Circa 1980



Father Coffield during a Christmas event at Hicks Camp
Circa 1954

AMIGOS DE LOS RIOS - EMERALD NECKLACE GROUP

BEFORE



RIO VISTA PARK AND TRAIL



Pollinators of Flowers

Butterflies can travel longer distances, ensuring coverage of equal amounts of flowering plants in a larger area. Butterflies pollinate a wide variety of flowers that open during the day. They frequent big, beautiful, brightly colored blooms. Butterflies have superior color vision, sensing more "wavelengths" than either humans or bees.

IN DANGER OF EXTINCTION

The numbers of these pollinators are being reduced in alarming rates by habitat loss, through urbanization and the overuse of pesticides.

COLLECTING POLLEN

Butterflies like to perch on larger flower heads when they hunt nectar, collecting pollen on their legs and body as they search for food.



The Amazing Migration

Monarchs are especially noted for their lengthy annual migration, which can take up to three generations to complete. The migration cycle of the monarch presents numerous obstacles in which many lose their lives.



The migrational pattern presently observed originated in the distant past when the monarchs were following the milkweed species which were spreading westward.

ENDANGERMENT

Rising climate changes threaten to disrupt this annual migratory pattern on which the Monarch's existence depends by affecting weather conditions in both wintering and breeding grounds. Colder and wetter winters could be lethal; hotter, drier summers could shift suitable habitats north.



Office Use Only / Para Use Official

1. Name / Nombre : Christine Mora (willy + 91 442 21 9710)

2. Residence in area (% mile of park)? / Casa dentro de la area (% mite del parque)? ☒ Yes / Si ☐ No

3. What language(s) do you speak? / Qué idioma(s) habla usted? Spanish & English

4. Would you like to have a neighborhood park? / ¿Le gustaría tener un parque del barrio? ☒ Yes / Si ☐ No

5. Why? / Porque? Because its very dangerous for the children to play in the streets on cross valley to Baldwin mini park we need a park in our area.

6. Do you have children that do you have a park? / ¿Tiene hijos que le gustaría a un parque? ☒ Yes / Si ☐ No How many? / Cuantos? 4

7. What would you like to see in a neighborhood park? / ¿Qué le gustaría ver en un parque del barrio?

☒ Trees / Arboles ☐ Paths / Senderos ☐ Flowers / Flores

☐ Benches / Bancas ☒ Playground / Páiso de recreo ☐ Habern / Habitats

☐ Slides / Platano ☐ Swings / Colompas ☒ Barbecue / Parrilla

☐ Basketball courts / Canchas de baloncesto ☐ Picnic Tables / Mesas para picnic

☒ Volleyball courts / Canchas de voley ☐ Other / Otro

[illegible]

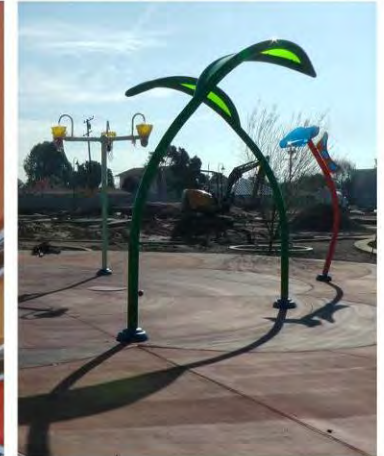




فراشة

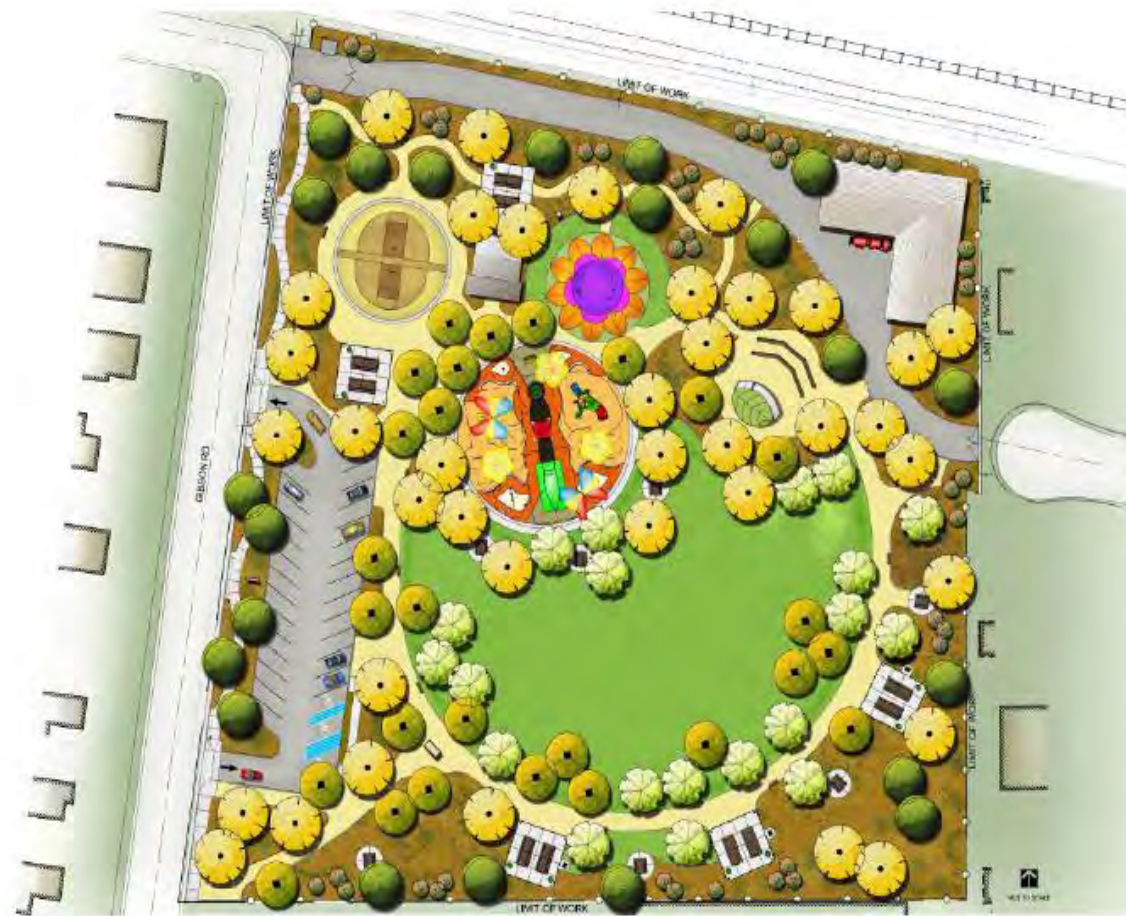
butterfly

蝶



COMMUNITY BASED DESIGN PROCESS

The fluttering of a butterfly's wings can effect climate changes on the other side of the planet.



AMIGOS DE LOS RIOS - EMERALD NECKLACE GROUP

BEFORE



GIBSON MARIPOSA PARK

AMIGOS DE LOS RIOS - EMERALD NECKLACE GROUP

BEFORE



DURFEE THOMPSON SCHOOL JOINT USE PARK



Amigos de los Rios

LEGEND

- Industrial Area
- Commercial Area
- School
- Residential
- Equestrian Trail
- Class A Multi-benefit Bike trail
- Proposed Equestrian Trail
- Proposed Multi-benefit Bike trail
- Potential Park Entrance
- Existing Park Entrance
- Lake Edge View Point
- Exercise Station
- Picnic Area
- Sports Field



AMIGOS DE LOS RIOS - EMERALD NECKLACE GROUP

BEFORE



PECK PARK



Spent more time outdoors - Tune into Nature

PECK ROAD PARK CONSERVATION PARK

Emerald Necklace
Rio Hondo River
San Gabriel River



SAN GABRIEL MOUNTAINS

The massive San Gabriel Mountains stretch almost seventy miles across Los Angeles and San Bernardino Counties and span from the Los Angeles Basin to the Higher Sierras. The San Gabriel Mountains receive more than three million visitors annually in less than a twenty-four-hour drive and less than an hour of the Angeles National Forest. The Mountains and the Forest provide 20% of our region's water supply and contribute 70% of Los Angeles County's Open Space. Hiking trails and views from the mountains and the San Gabriel River. For many urban communities, the forest is a critical recreation resource. While visitors can enjoy the forest's recreation in many ways, the forest is also a critical habitat for many species. The forest is a critical habitat for many species. The forest is a critical habitat for many species.

The vast San Gabriel Mountains also are home to several local endangered species, from small to large, including such as the Spotted Owl, Santa Ana Shrike, Arrow-Club, Mountain Yellow-legged Frog, Spotted Owl, California Condor, San Joaquin Fox, Native, Golden Shrew, and Mountain Lion. We are working to protect the Angeles National Forest and the San Gabriel Mountains for current and future generations.



The mountains of San Gabriel extend over seventy kilometers of distance to the edge of the San Gabriel Mountains and Los Angeles, and across the San Gabriel Mountains. The mountains of San Gabriel extend over seventy kilometers of distance to the edge of the San Gabriel Mountains and Los Angeles, and across the San Gabriel Mountains. The mountains of San Gabriel extend over seventy kilometers of distance to the edge of the San Gabriel Mountains and Los Angeles, and across the San Gabriel Mountains.

The massive mountains of San Gabriel extend over seventy kilometers of distance to the edge of the San Gabriel Mountains and Los Angeles, and across the San Gabriel Mountains. The mountains of San Gabriel extend over seventy kilometers of distance to the edge of the San Gabriel Mountains and Los Angeles, and across the San Gabriel Mountains.

The map shows indicators where Peck Road Conservation Park is located within the Emerald Necklace near the Rio Hondo River.

The Emerald Necklace is a regional open space network designed to connect the San Gabriel Mountains to the Pacific Ocean. Please ask your parents to take you to the forest and ocean.

El mapa de arriba indica que el Parque de Conservación del Agua Peck está situado en el Collar de Esmeralda entre el Rio Hondo y el Océano.

El collar de esmeralda es una red regional de espacios abiertos diseñada para conectar las montañas de San Gabriel hasta el Océano Pacífico. Por favor, pida a sus padres que lo lleven al bosque y al mar.



PACIFIC OCEAN



EMERALD NECKLE

Conservation

Endangered

The San Gabriel Mountains are a habitat for many threatened and endangered species, which include the Mountain Lion, Golden Shrew, Spotted Owl, San Joaquin Fox, Santa Ana Shrike, Arrow-Club, Mountain Yellow-legged Frog, Spotted Owl, California Condor, San Joaquin Fox, Native, Golden Shrew, and Mountain Lion. We are working to protect the Angeles National Forest and the San Gabriel Mountains for current and future generations.

Las montañas de San Gabriel son un hábitat para muchas especies amenazadas y en peligro, que incluyen al león de montaña, shrew dorado, búho moteado, zorro de San Joaquin, shrike de Santa Ana, club de flecha, ranita de montaña, búho moteado, condor de California, zorro de San Joaquin, conejo de montaña, gato de montaña, y león de montaña. Estamos trabajando para proteger el Bosque Nacional Angeles y las montañas de San Gabriel para las generaciones actuales y futuras.

Please join us for a weekend event to help care for this area.
www.BosqueNacional.org or look us up on Facebook at: Angeles de los Rios

PROJECT FUNDED BY:



PROJECT PARTNERS:



Emerald Necklace Nature Trail

© 2013 AMIGOS DE LOS RIOS





Birds of the Rio Hondo PECK ROAD WATER CONSERVATION PARK

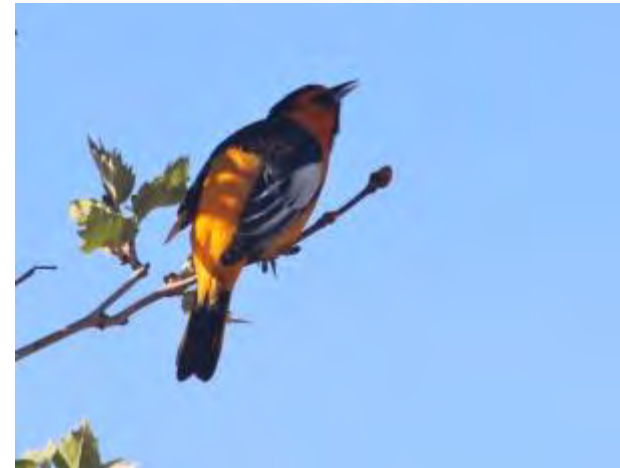
Emerald Necklace
Rio Hondo River
San Gabriel River



Many resident, migrant, and introduced species of birds utilize Peck Water Conservation Park throughout the year with 181 species having been recorded by the Pasadena Audubon Society. Avian abundance and diversity at Peck Park is typically greatest in the winter when over-wintering waterfowl are found in large numbers on the lake. During the spring and fall migration periods a number of migrant species are usually present. Information is provided on the breeding biology of birds that nest in Peck Park and some birds, residents and migrant species utilize the existing habitats. Please help us collect additional information by visiting <http://www.audubon.org/pasadenaparkwaterconservationpark>.

Muchas especies de aves residentes, migratorias e introducidas utilizan el Parque de Conservación de Agua Peck durante todo el año, con 181 especies registradas por la Sociedad Audubon de Pasadena. La abundancia aviar y la diversidad en el Parque Peck normalmente se ve mejor en el invierno cuando las aves acuáticas de Hibernación se encuentran en gran número en el lago. Durante los períodos migratorios de primavera y otoño una serie de especies migratorias están usualmente presentes. Se presenta información sobre la biología reproductiva de las aves que anidan en el Parque Peck y planea las especies tanto residentes como migratorias utilizan los hábitats existentes. Ayúdennos a recopilar información adicional visitando <http://www.audubon.org/pasadenaparkwaterconservationpark>.

Please join us for a volunteer event to help care for this area.
www.audubon.org/peck or look us up on Facebook at: Amigos de los Rios.



Emerald Necklace Nature Trail

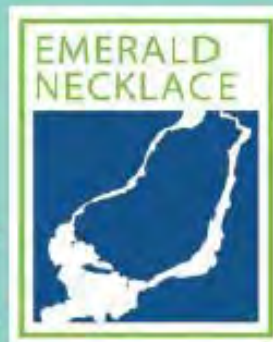
PROJECT PARTNERS:



Emerald Necklace Green Infrastructure | Los Angeles County

PECK RD. WATER CONSERVATION PARK

-QUARRY REDEVELOPED



www.amigosdelosrios.org | 908 E Altadena Dr | Altadena, CA 91001 | t:[626] 791.1611 | f:[626] 791.1771



- Created 540 linear foot bioswale
- Created 350 linear foot decomposed granite trail
- Removed subterranean concrete from former quarry
- Total trees planted to date 240
- Total shrubs planted to date 1,611
- Total trees planted to date 8,712

> phase I completed



Taxonomy Conditions - Urban River Transect

- | | | |
|---|---|--|
| 1. Pristine Forest/
Wilderness Areas | 20. Major Freeway |  <div> 1. Federal
 2. State
 3. County
 4. Municipal
 5. School District
 6. Private </div> |
| 2. Forest Recreational
Areas | 21. Billboard Site | |
| 3. Protected Species Areas | 22. Wetland | |
| 4. Single Family Housing | 23. Wash, Creek & Stream | |
| 5. Equestrian Facilities | 24. Brownfield | |
| 6. Religious Institutions | 25. Vacant Lot- Commercial | |
| 7. Army Corps Facilities | 26. Vacant Lot-Residential | |
| 8. Transportation Yard | 27. Golf Course | |
| 9. Major Arterial | 28. Nurseries | |
| 10. Industrial Park | 29. Fire Station | |
| 11. Sanitation/Fill Sites | 30. Regional Transportation-
Bus /Metro link Station | |
| 12. School | 31. Regional Park | |
| 13. Multi-Family Housing | 32. Pocket Park | |
| 14. Airport | 33. Neighborhood Parks | |
| 15. Commercial/Retail | 34. Quarry – Alluvial
Material | |
| 16. Industrial/
Manufacturing | 35. Dead End Street | |
| 17. Municipal Water
Management/ Spreading
Basins | 36. Trailer Park | |
| 18. Superfund Site | 37. Bike/Pedestrian path | |
| 19. Railroad Crossing | 38. Ports | |
| | 39. Office Complexes | |
| | 40. Residual Spaces | |

'Multi Benefit' Project Components

Amigos de Los Rios needs your help!

We have volunteer opportunities at various parks and sites along the Emerald Necklace. Be a part of making the Emerald Greenway a reality. This would be a great opportunity for families to get outside to do some good for the environment and their communities. If you have questions, we'd like to hear from you.



EMERALD NECKLACE



- File Path
- File Path
- Experiments Trail
- Experiments Trail

- 1 Fishing
- 2 Boats
- 3 Boatyard
- 4 Boat Rides
- 5 Boats
- 6 Boats
- 7 Cultural Resources
- 8 Drinking Water
- 9 Education and Signs
- 10 Environmental Assessment
- 11 Existing Equipment
- 12 Fishing
- 13 Historic Place
- 14 Historic Center
- 15 Docks or Cleavings
- 16 Docks/Boat Ramps
- 17 Parks
- 18 Park Areas
- 19 Piers
- 20 Pier Equipment
- 21 Recreation Center
- 22 Restrooms
- 23 Road Structure
- 24 Splash Pad
- 25 Trail
- 26 Underpass
- 27 View



El Collar Esmeralda

El Collar Esmeralda es una visión de una 17 milla cadena de interconectados senderos, parques y caminos verdes tocando a 17 ciudades y casi la mitad de un millón de residentes a lo largo de los Río Hondo y San Gabriel Ríos. La cadena de senderos va a conectar 1,500 acres de parques, terrenos abiertos y corredores de hábitat, al mismo tiempo históricamente conectando los ríos de Río Hondo y San Gabriel. El multi-beneficial sistema de parques y senderos va a ofrecer crítica oportunidades recreacional y fomentar la salud del público.

Proyecto Detalles: (A un vistazo)

Herencia de Naturaleza y Cultura: Con restauración de hábitat, el carácter original de la tierra y las comunidades del pasado regresan a vida. Las historias de los Ladinos, los barrios y los Americanos Nativos están presentes. Esto ofrece a generaciones del pasado y futuro una vislumbre del pasado.

Oportunidades de Recreación y la Salud Pública: El collar Esmeralda ofrece muy importante y necesario oportunidades de recreación para residentes sufriendo de enfermedades crónicas como hipertensión, asma, diabetes y obesidad. También crea alternativas corredores de transportación con oportunidades para caminar y andar en bicicleta para trabajo o la escuela.

La Salud y Restauración del Medio Ambiente: La restauración del medio ambiente y la salud del medio ambiente van mano y mano. Limpiando áreas afectadas con quemadura y haciendo restauración de hábitat ayuda a mejorar la salud de los ecosistemas biológicos interconectados.

Biodiversidad Urbana y Hábitat Restauración: Restauración de hábitat ofrece una plataforma para el desarrollo de Biodiversidad Urbana, reforzando el nativo flora y fauna.

Acceso a Naturaleza/Multi Modal Aprendiendo para Jóvenes Margi-
nados: Escenas naturales forman lugares muy dinámicos donde podemos aprender y esto se ha conectado muy fuerte con mejor funcionamiento en la escuela. Salones de la escuela afuera crean una conexión dentro de los jóvenes de la ciudad y la naturaleza.

Instrucción de Trabajo Para Jóvenes: El Amigos de los Ríos 'Green Jobs Corp' programa no solamente es para crear trabajos en una economía que lo necesita, pero también da a los jóvenes las habilidades y experiencia para entrar a los trabajos del nuevo y creciendo verde economía. Gestión de Recursos de Agua: El plantando de árboles a lo largo de la Coliar Esmeralda ofrece un viable sistema de la gestión de tempestad agua—un árbol intercepta 3,000 galones de lluvia cada año. Además, los proyectos a lo largo de la Coliar Esmeralda mejoran la calidad de agua, y también animan conservación por utilizando prácticas sostenibles de panorama.



Sign up by contacting us by phone or email:
626.444.8665
volunteer@amigosdelosrios.org





Mission Statement

The mission of The Wellness Center is to inspire and empower residents and patients to take control of their own health and wellbeing by providing culturally sensitive wellness services and resources that enable prevention, address the root cause of disease and improve health outcomes.

Declaración de Misión

La misión del Wellness Center es inspirar y fortalecer los residentes y pacientes a tomar control de su propia salud y bienestar, ofreciendo servicios que son culturalmente sensibles y recursos que permiten prevención, abordan la raíz de enfermedades y mejoran los resultados de salud.



Rx for Outdoor Activity

NAME: _____

DATE: _____

START WITH:

_____ minutes _____ days per week

GRADUALLY INCREASE TO:

_____ minutes _____ days per week

WHERE:

HEALTH CARE PROVIDER SIGNATURE:

Dr. Mark Ghaly

PLAY EQUIPMENT USE & SAFETY

Adult Supervision Required

Ages/Edades 2-12



Spotted Toad

These animals are found in the forest!



Bighorn Sheep



San Joaquin Kit Fox



Arroyo Chub



Bay Checkerspot Butterfly



Mountain Lion



Bike Trail



River

Estos animales se pueden encontrar en el bosque!



Western Tanager



Santa Ana Sucker



Northern Spotted Owl



Speckled Dace



Langes Metalmark Butterfly



Mountains



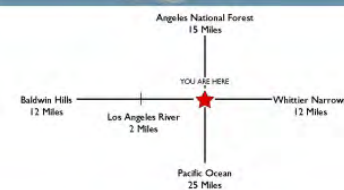
Family Fun

The San Gabriel Mountains serve as habitat for many threatened and endangered animal species which include the Bighorn Sheep, Northern Spotted Owl, San Joaquin Kit Fox and Mountain Lion. There are also three protected species of fish native to our watershed: the Speckled Dace, Santa Ana Sucker, and the Arroyo Chub who live in the San Gabriel River of the Angeles Forest. Non-Profit organizations, like Amigos de los Rios work to connect urban communities to nature. Would you consider visiting some of our Los Angeles Basin natural areas for exercise and family fun?

We have planted native plants along the Wellness Center fitness trail - to support and protect local habitat.

Las montañas de San Gabriel sirven como hábitat para muchas especies de animales que son amenazadas y en peligro de extinción. Estos animales incluyen el borrego cimarrón, tecolote manchado del norte, Zorro kit de San Joaquín y León de la Montaña. También hay tres especies especiales de peces: Carpita Pinta, Ventosa de Santa Ana, y el Cacho de Arroyo – que viven en el río San Gabriel del Bosque Angeles. Organizaciones sin fines de lucro como Amigos de los Rios trabajan con las comunidades para crear y proteger los hábitat que estos animales necesitan para sobrevivir. ¿Nos ayudaras?

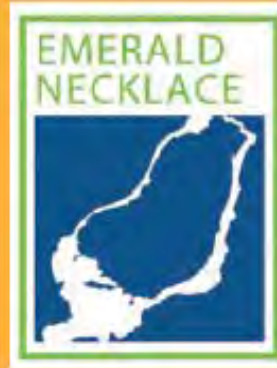
Hemos plantado plantas nativas a lo largo de la de la caminata del Wellness Center para proteger el hábitat local.



Emerald Necklace Green Infrastructure | Los Angeles County

MADRID EXERCISE & NATURE TRAIL

-JOINT USE PROJECT, EL MONTE



www.amigosdelosrios.org | 908 E Altadena Dr | Altadena, CA 91001 | t:[626]791.1611 | f:[626]791.1771



ACRES: 2

FUNDER: California Natural Resources Agency, California Community Foundation, California Department of Transportation, LA County Supervisor First District & LA County Open Space District, CAL FIRE

DATE: 2013

PROJECT TEAM: Amigos, Mountain View School District, Terra Form Consttuction, COC LACC, and SGVCC



>exercise & nature







Trees Improve Air Quality

TREES ARE THE LUNGS OF THE EARTH.

Motor vehicles, factories and other urban polluters emit carbon dioxide and toxic particles into the air. Inhaling these contaminants has been shown to reduce life expectancy, and for some, results in lifelong respiratory diseases.



Not only does each tree absorb carbon dioxide for its entire lifetime, but trees also filter ozone, sulfur dioxide, nitrogen oxide, dust, smoke and fumes from the air. They generate oxygen and make the air moister, cooler and cleaner.



- A single mature tree can absorb carbon dioxide at a rate of 48 lbs. Per year.
- One tree can also absorb 10 lbs of air pollutants per year, including 4 lbs of ozone and 3 lbs of particulates.
- Two trees provide enough oxygen for a family of four.

Monty says:
"For cleaner air, plant a tree in your community!"

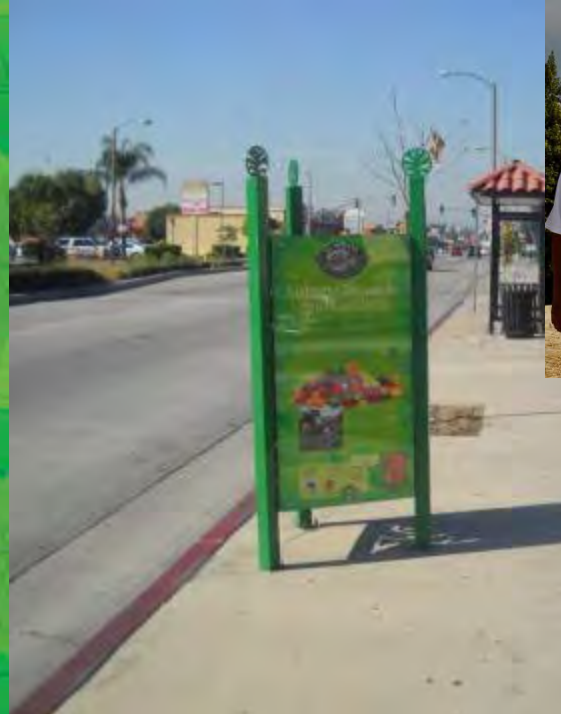


VISIT ALL THE TREE POWER TOWERS
TO LEARN MORE ABOUT HOW
TREES IMPROVE YOUR COMMUNITY
AND THE EARTH



Let's grow the next future.

TREE POWER TOWER



Tree Power Project Weather Station

Current Temp

82.8°F
82.8°F

Temperature Averages

The average summer temperature here in El Monte is between 63 and 90 degrees in warmer months, and 42 to 70 degrees in cooler months.

Did You Know?

Planting of trees can help in reduction of temperature and other pollutants. Recent studies show that roads with plenty of trees experienced a temperature reduction of up to 20%.

Tree Trivia Quiz

What part of a tree transports food from the leaves to the rest of the tree?

- A. Cambium
- B. Roots
- C. Phloem or inner bark

Find the answer at the next Tree Power Tower!

STAY INDOORS
AVOID STRENUOUS
ACTIVITIES

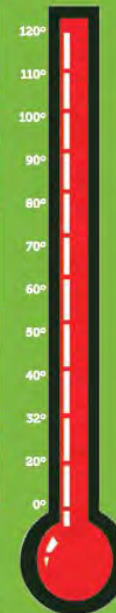
LIMIT TIME OUTSIDE
KEEP HYDRATED
AVOID DIRECT SUN

IDEAL FOR
ENJOYING
OUTDOORS

BUNDLE UP
FOR COOLER
TEMPERATURES
FREEZE
WARNING

STAY WARM
INDOORS AND
AVOID COLD

Check the thermometer to see if you are experiencing below average or above average temperatures, and see how that should guide your activities.

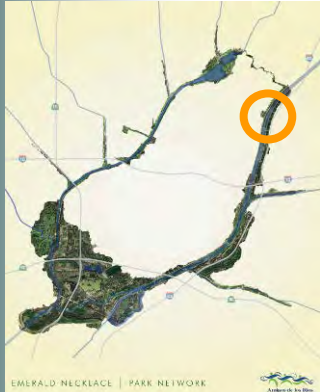




Durfee/Thompson School

PASSIVE ACTIVE INTERLACE

- State-of-the-art: Sports Field and Perimeter Nature Trail
- Outdoor Interpretive Area / Reconnect with Nature



Platejura santon male



City of El Monte

*Congressional Appropriation- Congresswoman, Hilda Solis partial funding

school joint use trail

> Outdoor Classroom



> Therapy Area

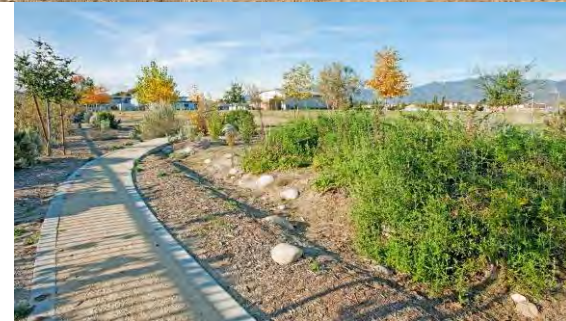
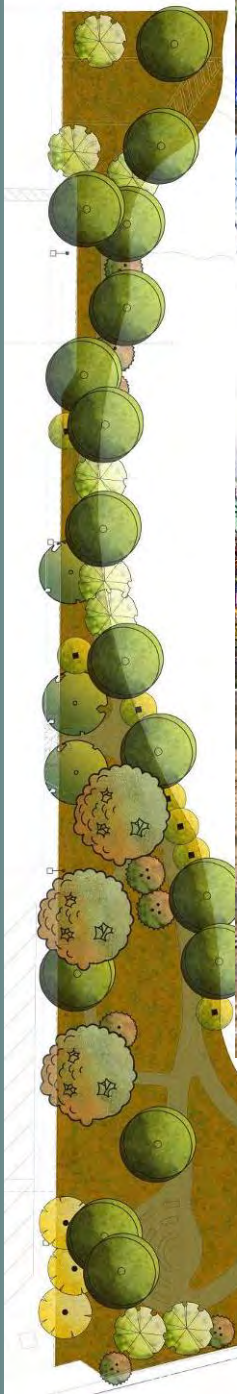


> Educational Signage



> Nature Trail





AMIGOS DE LOS RIOS - EMERALD NECKLACE GROUP

BEFORE



DURFEE THOMPSON SCHOOL JOINT USE PARK



**Los Angeles Basin
EMERALD NECKLACE
INITIATIVE**

**Greenway Network
Infrastructure**

**CONVERGENT
Green Infrastructure**

For Our Metropolitan Area



Emerald Necklace Community Projects GREENWAYS

COLLECTIVE IMPACT APPROACH

1. COMMON AGENDA
2. SHARED MEASUREMENT
3. MUTUALLY REINFORCING ACTIVITIES
4. CONTINUOUS COMMUNICATION
5. BACK BONE SUPPORT

Emerald Necklace GREENWAYS LOS ANGELES BASIN

Work in parallel at Multiple Scales/Realities – each has its own ecology and the river connects all realities

Metropolitan Area Scale

Site “Pilot” Project Scale

Policy Scale

CONVERGENT INFRASTRUCTURE

1. Embody your Urban Waters vision in a fabulous & powerful prototype project – enjoy including community get messy
2. Make sure to outline a Very Big Picture Vision –this is the larger context of your specific site work
3. Write a great charter document to bring People & Agencies together in Collective Impact mode
4. Embed your Vision into CONVERGENT INFRASTRUCTURE PROJECTS from Multiple Agencies

Los Angeles Basin Stormwater Network GREEN INFRASTRUCTURE – METRO PROJECTS

Incorporate Green Infrastructure & Biological Mitigation for Metro & Local Return Projects



California is experiencing an historic drought, leading both Governor Brown and LA Mayor Garcetti to issue significant water conservation mandates. Therefore, it is imperative that we design and build public projects that will capture and manage stormwater to recharge groundwater sources and increase the supply of water, making our region more drought resilient.

The EnviroMetro coalition has identified the opportunity to leverage water quality and water supply improvements using green infrastructure which also serves to improve urban biodiversity, contributes to climate resiliency and provides active transportation mobility options related to Metro projects.

We recommend that Metro amend its "Green Construction Policy" to incorporate integrated water management features such as stormwater runoff capture and management as well as permeable surfaces into the design and construction of all rail, bus rapid transit, arterial or highway improvements and other projects such as TOD, joint development projects, maintenance facilities, and parking lots. Further, we believe that Metro should establish the goals of stormwater runoff capture and management as guidelines for the expenditures of Local Return projects.

Transportation construction will impact natural habitats and Metro should be proactive in mitigating this. We recommend instituting a robust and comprehensive Regional Advance Mitigation Program, such as those already used successfully in Riverside, San Diego, and Orange County transportation sales tax measures.



key goals & outcomes

Convergent "multi - objective" Infrastructure
Coordinate Sustainable Transportation, Parks & Open Spaces, Water Resources, and Natural Resources Infrastructure

- Water conservation through stormwater capture
- Water quality improvements
- Reduce heat island effects
- Reduce biological and habitat impacts
- Provide multi-benefit active transportation opportunities
- Sustainable landscapes
- Quality of life and community enhancements

For additional information about the LA County Metro Greenway Network Plan, visit www.envirometro.org/priorities



OLMSTED BARTHOLOMEW 1930
Comprehensive trail & greenway
network to connect
key natural areas throughout
the LA BASIN
and beyond

ANGELES NATIONAL FOREST



The Olmsted Vision



EXISTING PARKS
PROPOSED GREENWAYS – URBAN RIVER CORRIDORS
BEACHES & COASTAL TRAIL
ANGELES NATIONAL FOREST
SCHOOLS OVER 5 ACRES



Map by GreenInfo Network www.greeninfo.org

Creative Commons
CC-BY-NC-SA
The City Project
www.cityprojectca.org



Emerald Necklace GREENWAYS LOS ANGELES BASIN

Work in parallel at Multiple Scales/Realities – each has its own ecology and the river connects all realities

Metropolitan Area Scale

Site “Pilot” Project Scale

Policy Scale

CONVERGENT INFRASTRUCTURE

1. Make sure to outline a Very Big Picture Vision –this is the larger context of your specific site work
2. **Embody your Urban Waters vision in a fabulous & powerful prototype project – enjoy including community in transformation**
3. Write a great charter document to bring People & Agencies together in Collective Impact mode
4. Embed your Vision into CONVERGENT INFRASTRUCTURE PROJECTS from Multiple Agencies

Emerald Necklace Greenways

LOS ANGELES BASIN

Work in parallel at Multiple Scales/Realities – each has its own ecology and the river connects all realities

Metropolitan Area Scale

Site “Pilot” Project Scale

Policy Scale

CONVERGENT INFRASTRUCTURE Scale

1. Make sure to outline a Very Big Picture Vision –this is the larger context of your specific site work
2. Embody your Urban Waters vision in a fabulous & powerful prototype project – enjoy including community get messy
3. Write a great charter document to bring People & Agencies together in Collective Impact mode
4. Embed your Vision into CONVERGENT INFRASTRUCTURE PROJECTS from Multiple Agencies

Emerald Necklace GREENWAYS LOS ANGELES BASIN

Work in parallel at Multiple Scales/Realities – each has its own ecology and the river connects all realities

Metropolitan Area Scale

Site “Pilot” Project Scale

Policy Scale

CONVERGENT INFRASTRUCTURE

1. Embody your Urban Waters vision in a fabulous & powerful prototype project – enjoy including community get messy
2. Make sure to outline a Very Big Picture Vision –this is the larger context of your specific site work
3. **Write a great charter document to bring People & Agencies together in Collective Impact mode**
4. Embed your Vision into CONVERGENT INFRASTRUCTURE PROJECTS from Multiple Agencies

Emerald Necklace Greenways LOS ANGELES BASIN

Work in parallel at Multiple Scales/Realities – each has its own ecology and the river connects all realities

Metropolitan Area Scale

Site “Pilot” Project Scale

Policy Scale

CONVERGENT INFRASTRUCTURE Scale

1. Make sure to outline a Very Big Picture Vision –this is the larger context of your specific site work
2. Embody your Urban Waters vision in a fabulous & powerful prototype project – enjoy including community get messy
3. Write a great charter document to bring People & Agencies together in Collective Impact mode
4. Embed your Vision into CONVERGENT INFRASTRUCTURE PROJECTS from Multiple Agencies