



Reconnecting to our Waterways

A Collective Impact Initiative
in Indianapolis

We turned our back on our waterways

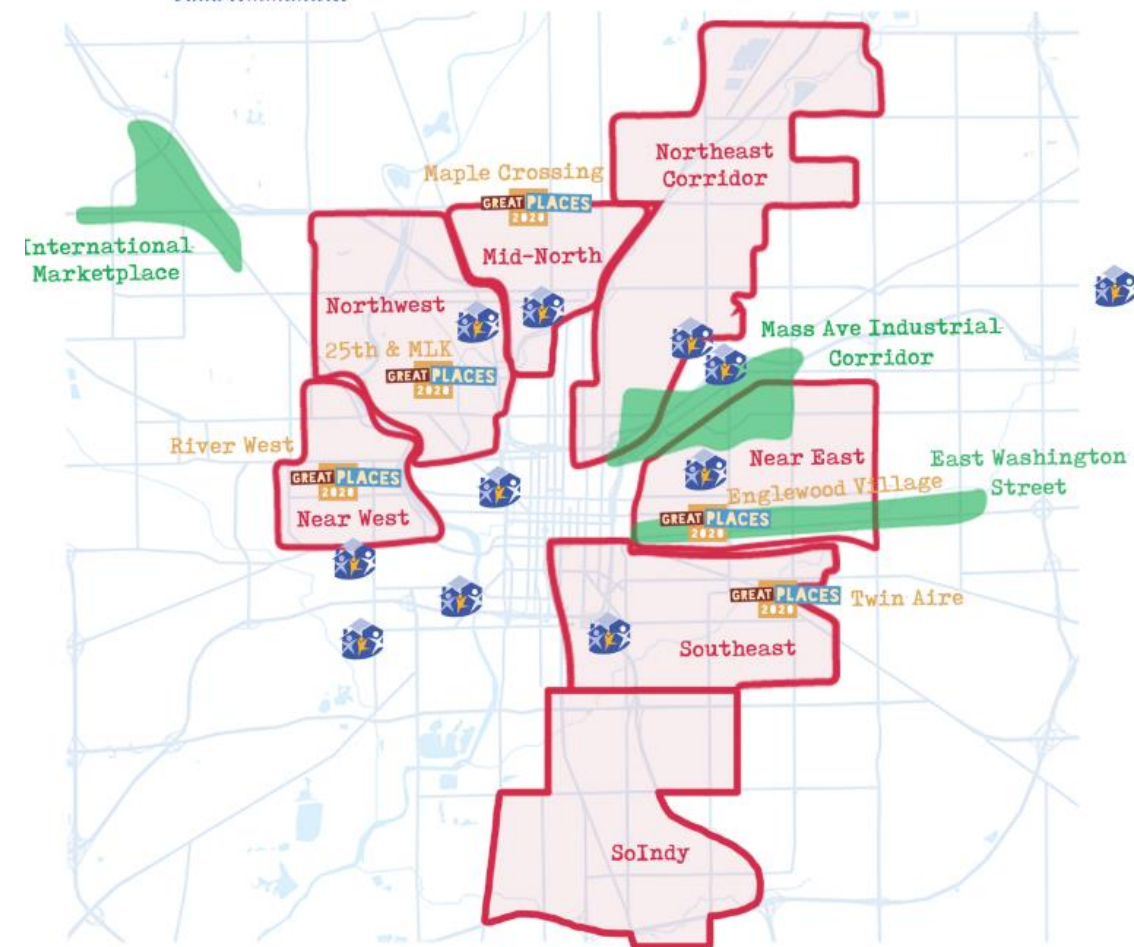


Could we together, see the waterways as an asset?

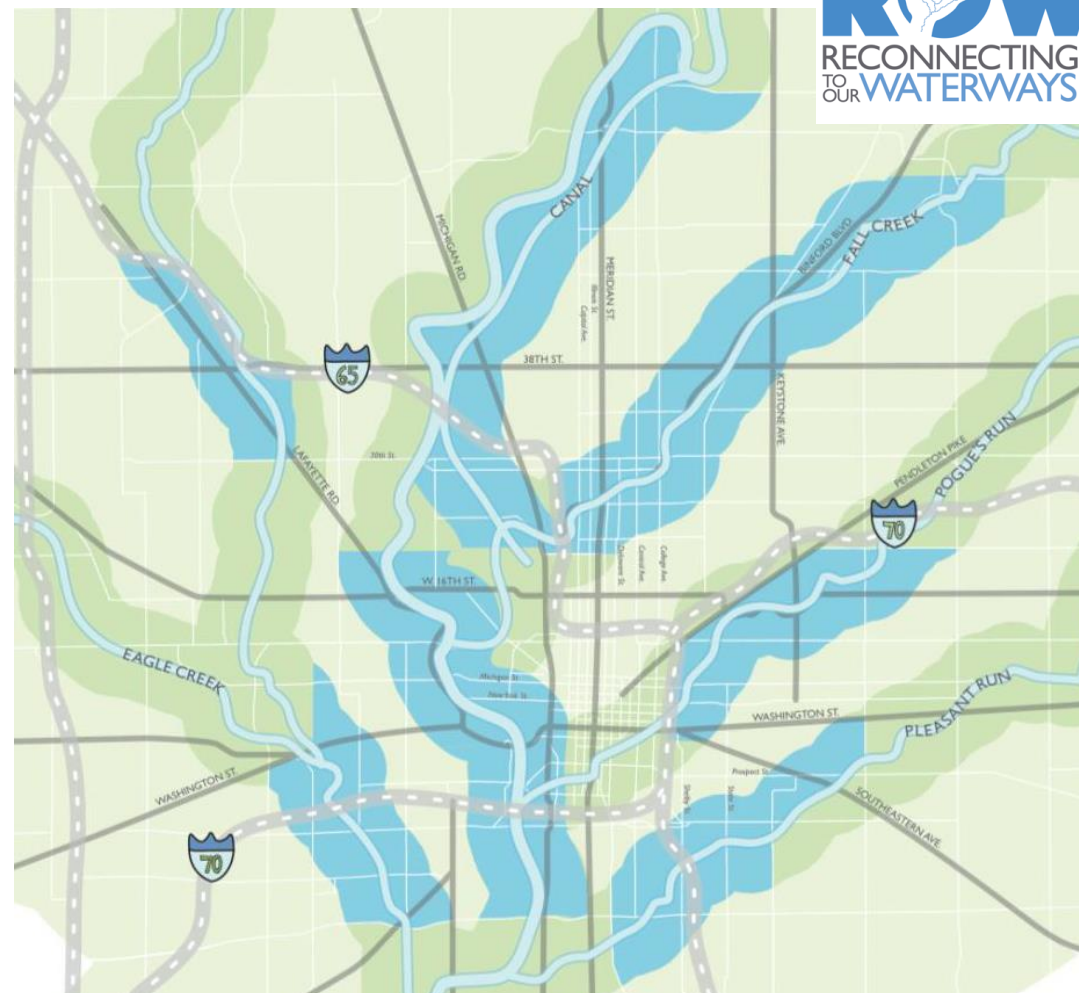


Could we leverage existing community development momentum?

LISC
Indianapolis
*Helping neighbors
build communities*



ROW
RECONNECTING
TO OUR WATERWAYS

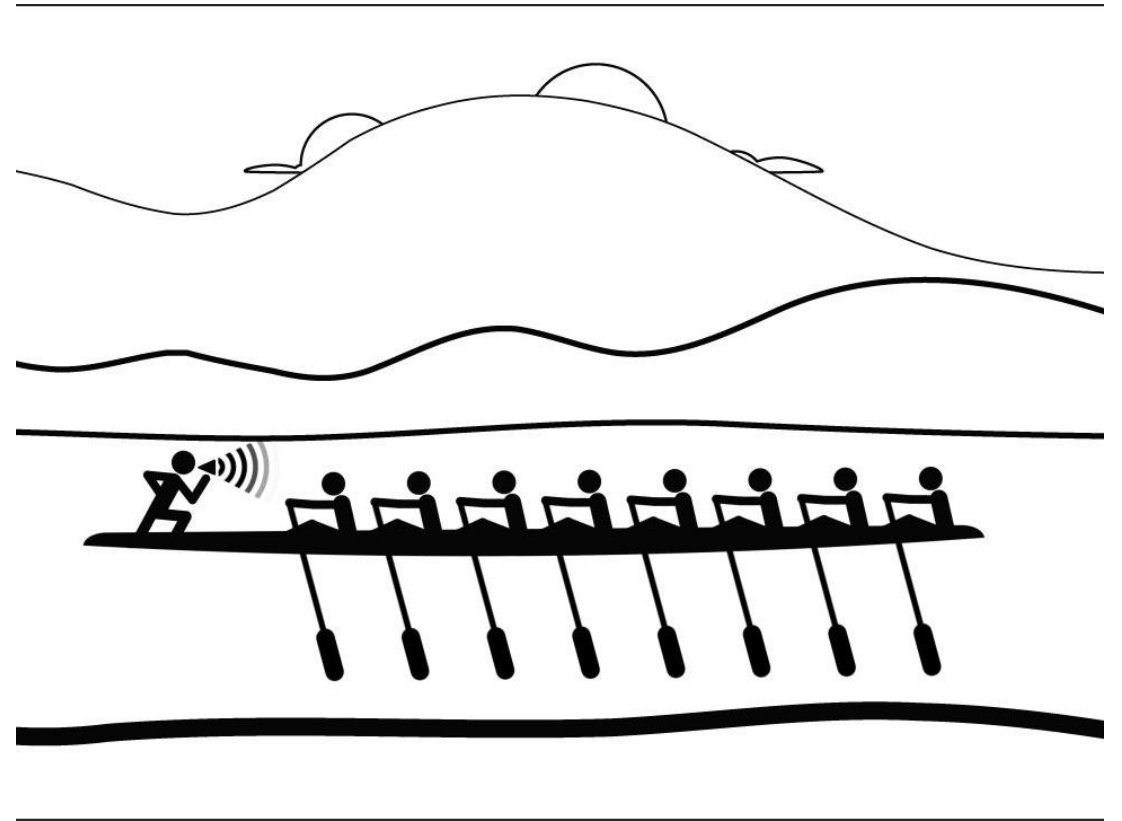


ROW's Mission and Vision

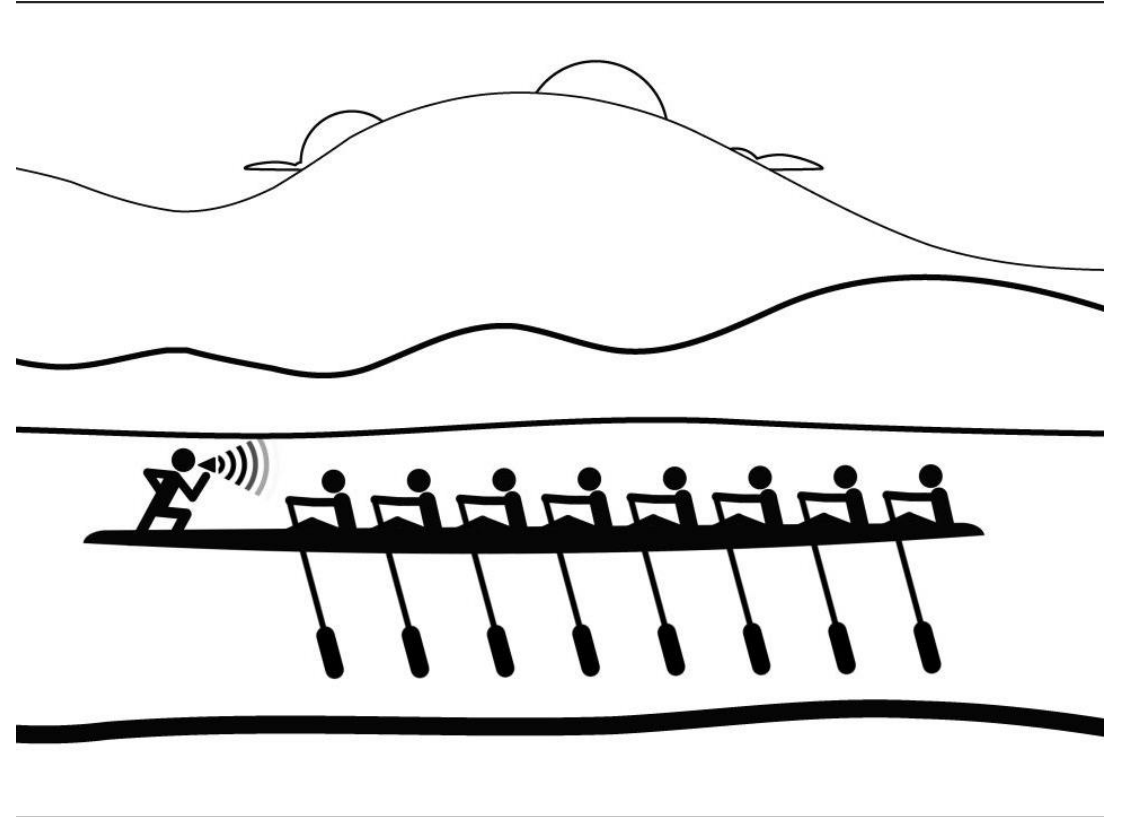
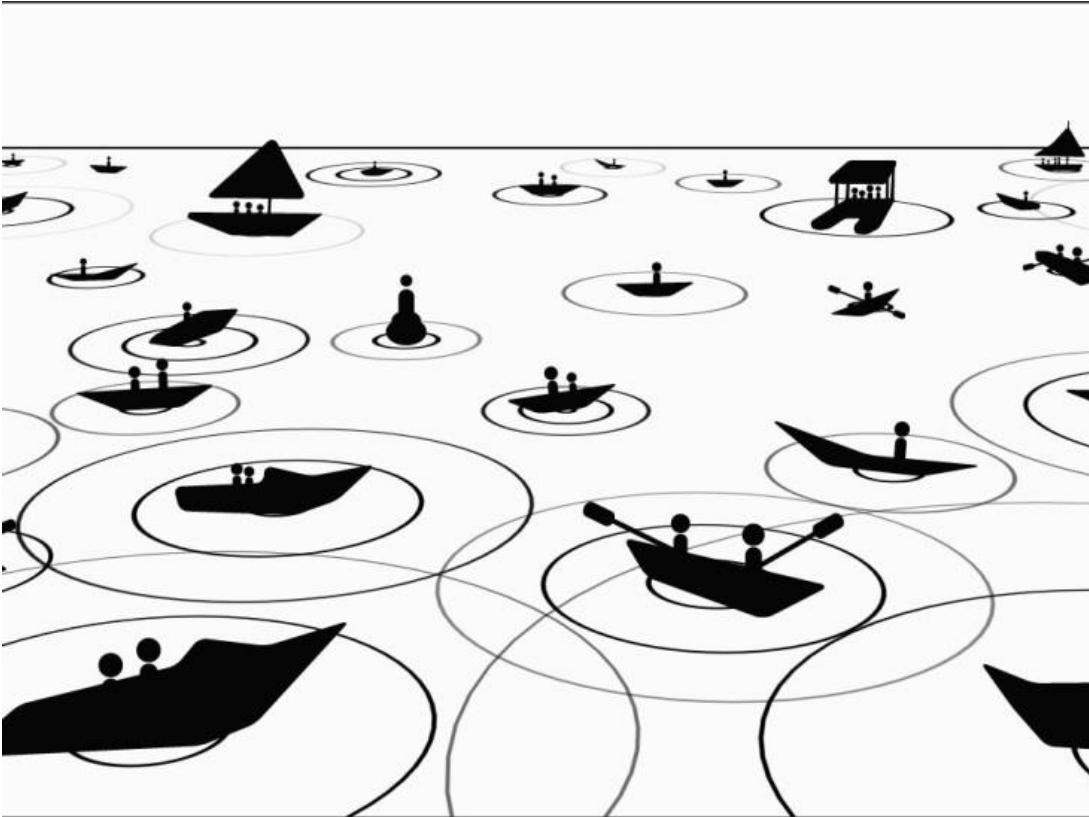


MISSION

ROW convenes community partners to enhance quality of life through innovation, analysis, cultural advancement and investment along Indy waterways and in neighborhoods.



Collective Impact



...is a set of guidelines used to measure, encourage, and achieve social change.

ROW's Holistic Approach



Element	Guiding Principle
Aesthetics	Infuse functional art and natural beauty into waterway neighborhoods.
Connectivity	Create artistic, beautiful, and welcoming access points to our waterways.
Economics	Leverage opportunities for economic growth for neighborhoods adjacent to waterways.
Education	Inspire residents to learn about waterways' health, history and value to adjacent neighborhoods.
Ecology	Create conditions that improve ecological form and function of the waterways.
Wellbeing	Create safe and accessible opportunities that promote and support physical and mental well-being



LISC

Indianapolis
*Helping neighbors
build communities*

Our Mission:

Local Initiatives Support Corporation (LISC) Indianapolis is the local office of a national organization that helps community-based organizations transform distressed neighborhoods into healthy ones – good places to live, do business, work, and raise families.

LISC as partner in ROW, focuses on Economics Element

LISC is an investor, capacity builder, convener and innovator.



Pool public and private dollars

We raise funds from philanthropies, corporations and financial firms, federal, state and local governments and through the capital markets.

We also generate income from consulting, and lending services.



Work with local partners

Through a network of local offices and community-based partners across the country, we provide grants, loans, equity and technical assistance.

We also lead advocacy efforts on local, regional and national policy.



Support people and places

By investing in housing, businesses, jobs, schools, public spaces, safety, youth, health centers, grocery stores and more, we catalyze opportunities in communities nationwide.

LISC impact nationally since 1979

\$18.6 billion invested



\$56.2 billion leveraged



376,000 homes

Affordable homes built and/or preserved including:

- Multifamily rental
- Supportive housing for special populations such as chronically homeless, LGBTQ, seniors and veterans
- Affordable homeownership

We also emphasize sustainability through green, healthy housing and transit oriented development.

63 million square feet

Square feet of commercial, retail and community space, including:

- Early childhood centers
- Schools
- Fields/recreational spaces
- Healthcare centers
- Grocery stores
- Financial Opportunity Centers

\$287 million

Total Net Assets

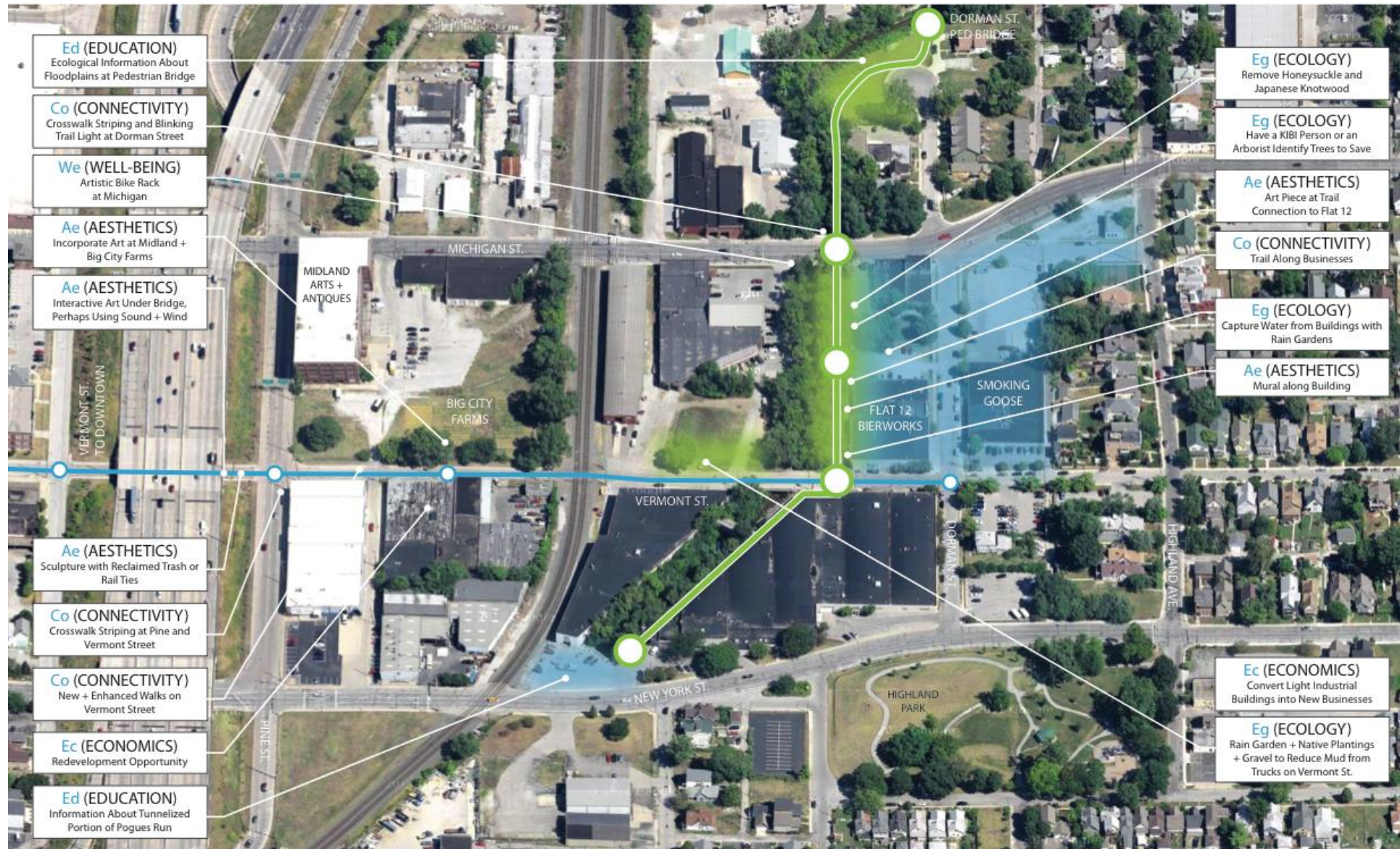
- Net worth has increased 48% in the past 4 years
- Closed on more than \$1.6 billion of debt transactions with NO defaults
- Raised an average of \$123 million annually in grants over the past 3 years

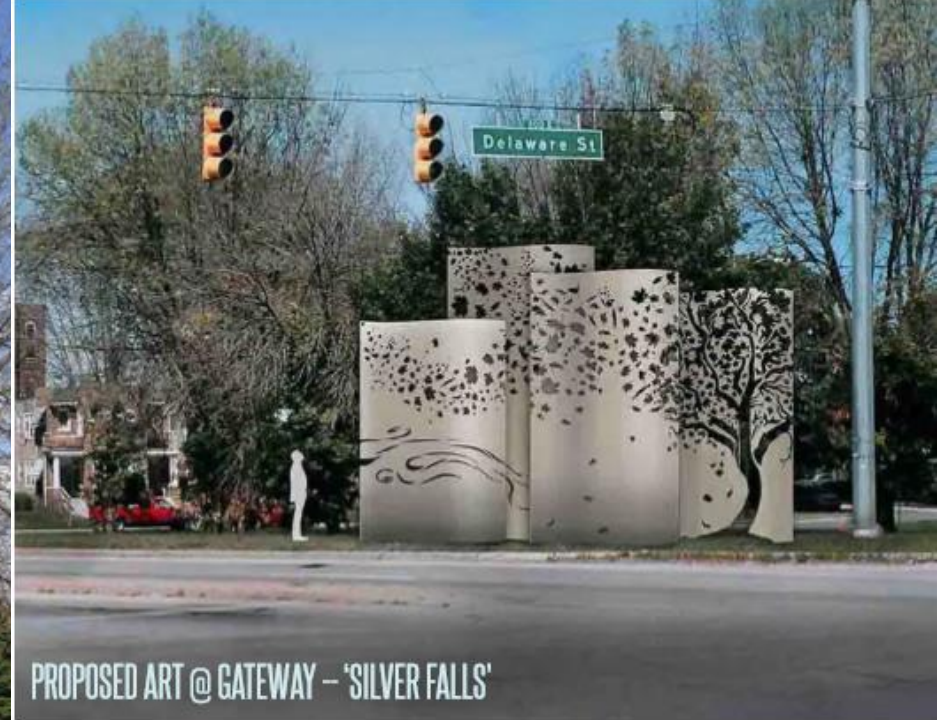
S&P ‘AA’ Rating

LISC is the first CDFI to tap the general obligation bond market, with a \$100 million issuance in 2017

One neighborhood waterway: POGUE'S RUN













BARTH BRIDGE DEMOLITION



HISTORIC SIGNS TO BE RE-PURPOSED



NEW PEDESTRIAN BRIDGE



BARTH AREA AMPHITHEATER





DMD Community Development Block Grant \$5 million

Citizens Energy Deep Rock Tunnel (multi-millions)

Lilly Day of Service \$1.5 million (2012-2014) cash, volunteer time and plant material plus partner contributions

Butler CUE / NSF \$2.9 million

Kresge Foundation \$1.35 million

LISC Great Places 2020 \$5 Million

Keep Indianapolis Beautiful ~ 30% program expenses or nearly \$3M

Ivy Tech \$500,000 (for plant materials)

CICF \$375,000

\$35+ million in projects





Thank you

Tedd Grain

LISC Indianapolis

www.liscindianapolis.org

For more information on
Reconnecting to Our Waterways
please visit
www.ourwaterways.org