

Baltimore City's Camp Small

Urban Wood Utilization

and the

Zero Waste Initiative



Camp Small – established 1861

- Area was cut and cleared as a Civil war camp to secure the ammunition supply route along the railroad line
- Has served as the City's 'Stump Dump' since the early 1900's
- Collection facility for brush, chips, and logs from public trees
- Located along the Jones Falls River and the Jones Falls Expressway
- Site is 4.5 acres



- City would pay an an average of 60k dollars annually to have the site partially cleared.
- In 1994 the cost of removal was 350,000
- There were no programs in place to capture higher value from the material collected

The Zero Waste Initiative

- Baltimore's Office of Sustainability and Recreation and Parks' Division of Forestry put together a 5 year management plan for Camp Small
- In 2015 the Bureau of the Budget and Management Research (BBMR) awarded the Zero Waste Initiative an Innovation Fund of \$98,000
- The 3 step plan
 1. Screening the Legacy Mulch
 2. Log Sorting and Sales
 3. Composting



Phase One

- Getting to know Buyers/Markets
- Clearing Space
- Screening the legacy mulch



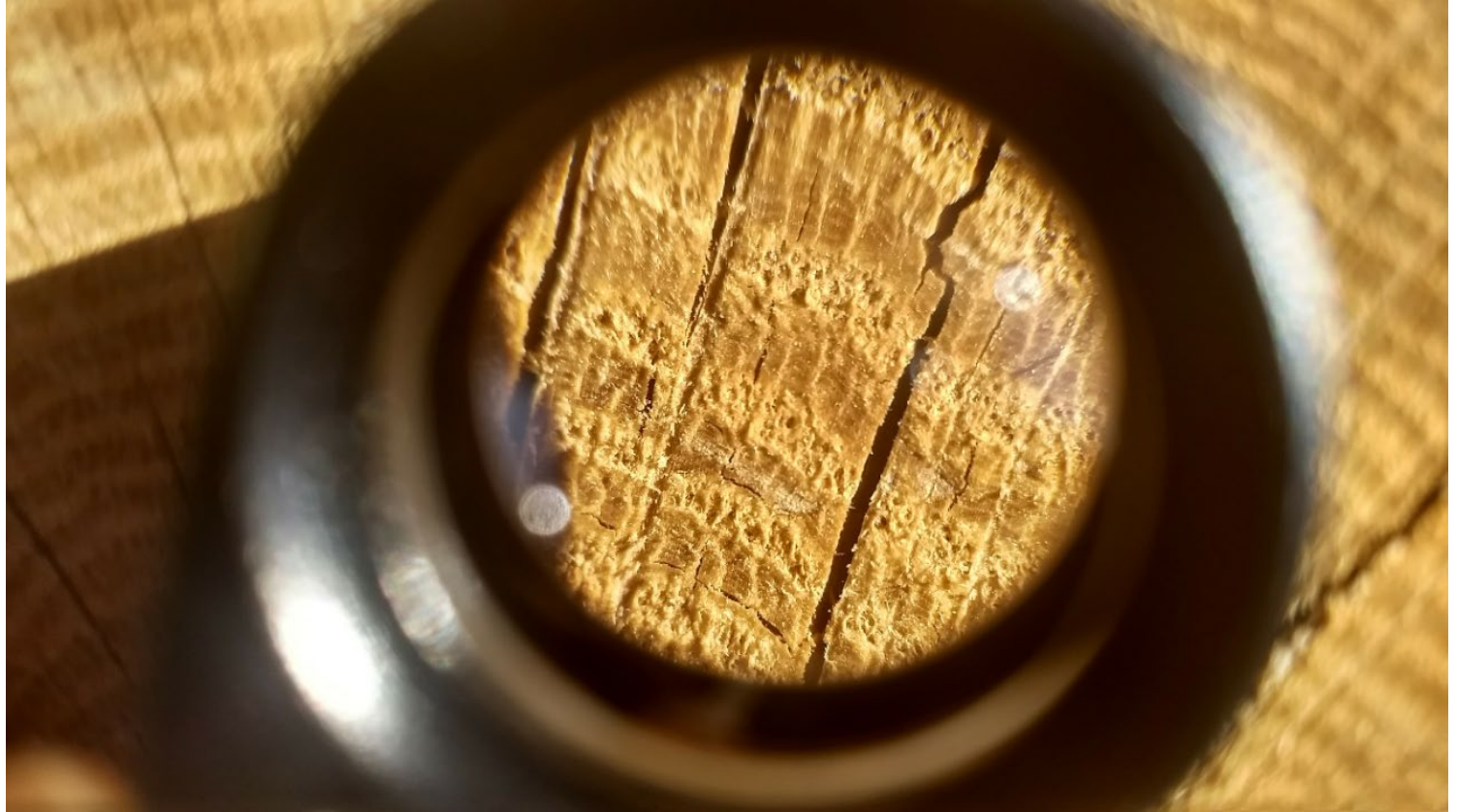




Sales and Pricing

- set up a square account allowing for easy on-site transactions and simple record keeping.
- Established pricing on all material at Camp Small including bulk 'you load & haul' pricing.









Woodhawks Firewood Club

- Worked with Purchasing and Risk Management to establish a firewood collection program
- Annual membership allows participants to:
 - Saw logs into rounds from designated area
 - Haul one pickup sized load of rounds per month. A Possible four cords per year
 - Works on an honor system
- Stocked with smaller diameter logs. Ash, Oak, Locust, Maple, Cherry, Pear

Challenges

- Wood Chips
 - Log rounds in the chips
 - Identifying species and condition of chips
 - Plastic bottles and lunch trash

- Brush
 - No excavator to consolidate piles
 - Eliminating trash and soil
 - Processing

- Logs
 - Metal
 - Lengths cut to a minimum of 9 foot
 - Logs cut to suit buyer needs





Seminar on Wood Utilization

- Mandatory seminar for all crews, contractors and our partners
- Mike Galvin (SavAtree, Baltimore Wood Project) and Dan Rider (MD DNR) assisted in the planning, Dan Rider lead the event
- Designed to teach best forestry practices and to explain what we are trying to achieve through those practices



Purchases and End Uses

Since the Initial clearing...

- Over 5,000 cu yds of wood chips sold and another 2,000 used within the agency and its partners.
 - mulching, mushroom farming, composting, nature and garden paths, temporary access roads.
- 90,000 bd ft of logs have been utilized
 - Lumber, bowls, tap handles, whiskey barrels, ox yokes, nature playgrounds, furniture, bee hotels, barriers, outdoor seating, instruments.



Bowl Turned from Bradford Pear



Camp Small logs in Nature Playspaces



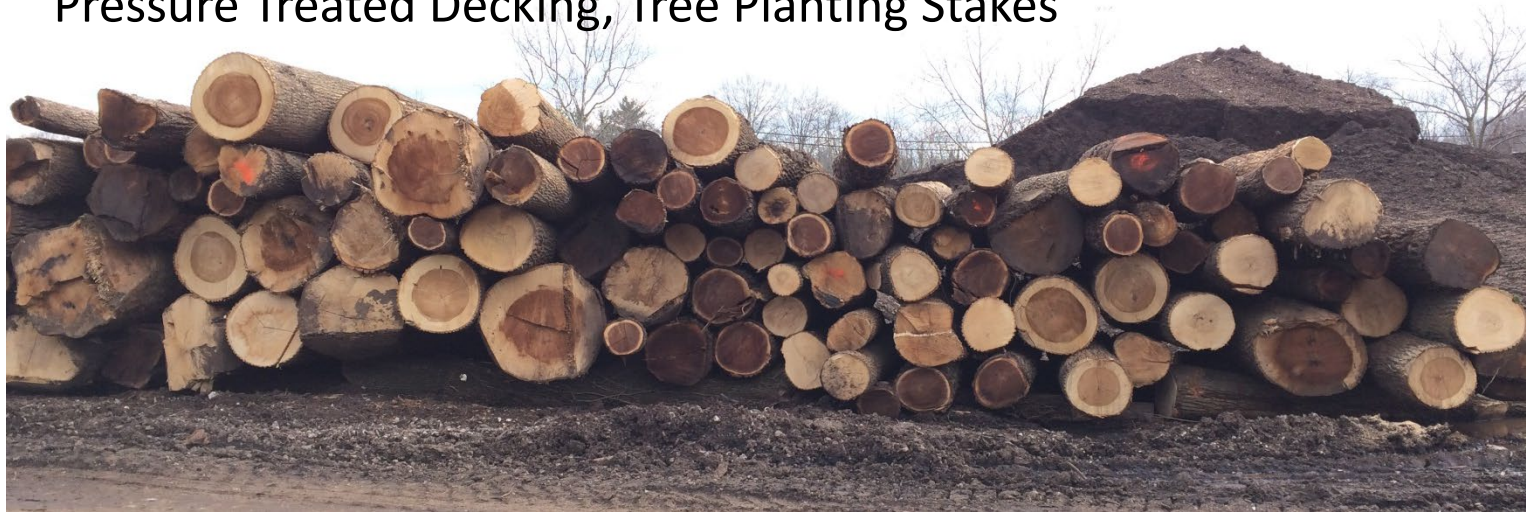
Maryland Institute of Technology's Sustainability class at Camp Small



Students from Carver Vo-Tech High School installing the Tree Slice Display at Druid Park Nature Playspace.

Logs to Lumber

- Looked at upcoming Recreation and Parks Capitol projects for ways to utilize the logs harvested from large City clearings- DPW & BGE
- Set up a 3 year contract with a local sawmill to cut, dry and mill
- 50,000 board feet of lumber has been produced and has provided BCRP a savings of more than \$150,000- Flooring, Wall Cladding, Pressure Treated Decking, Tree Planting Stakes





American Forests Grant

- \$40k grant to allow Camp Small to start a Wood Products Program
- Afforded the program a portable band-sawmill, a small kiln, and a log splitter.





Next Steps...

- Expanding the program through increasing staff with workforce development employees
- Increasing production of valuable materials through procuring additional equipment.
- Strengthening our partnerships to aid one another in the goals of employment and reduced waste
- Increasing awareness of Camp Small and making our products more accessible