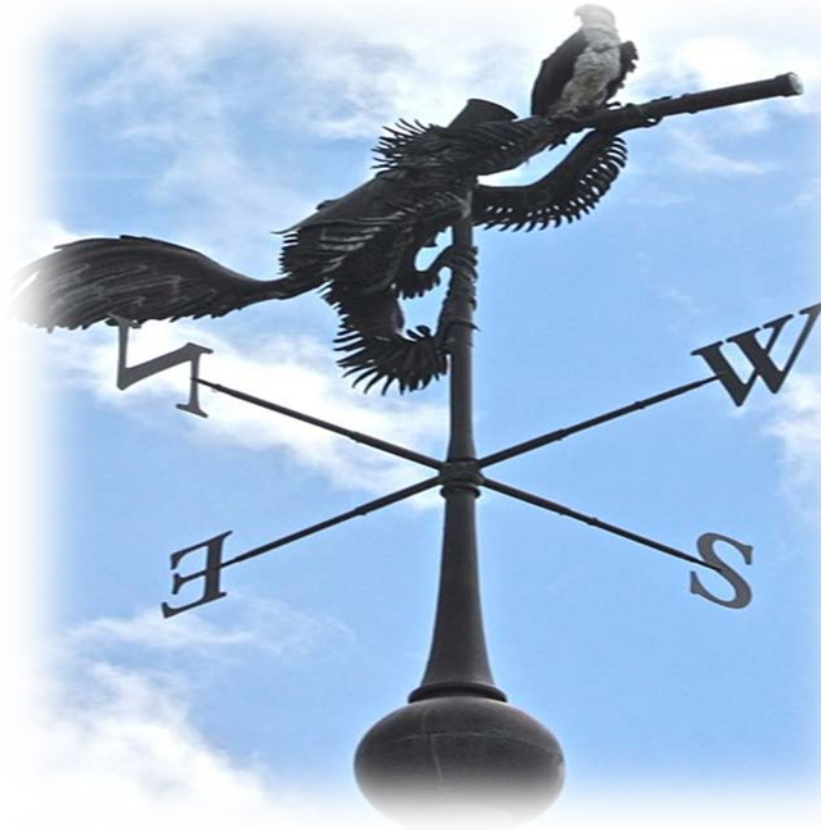
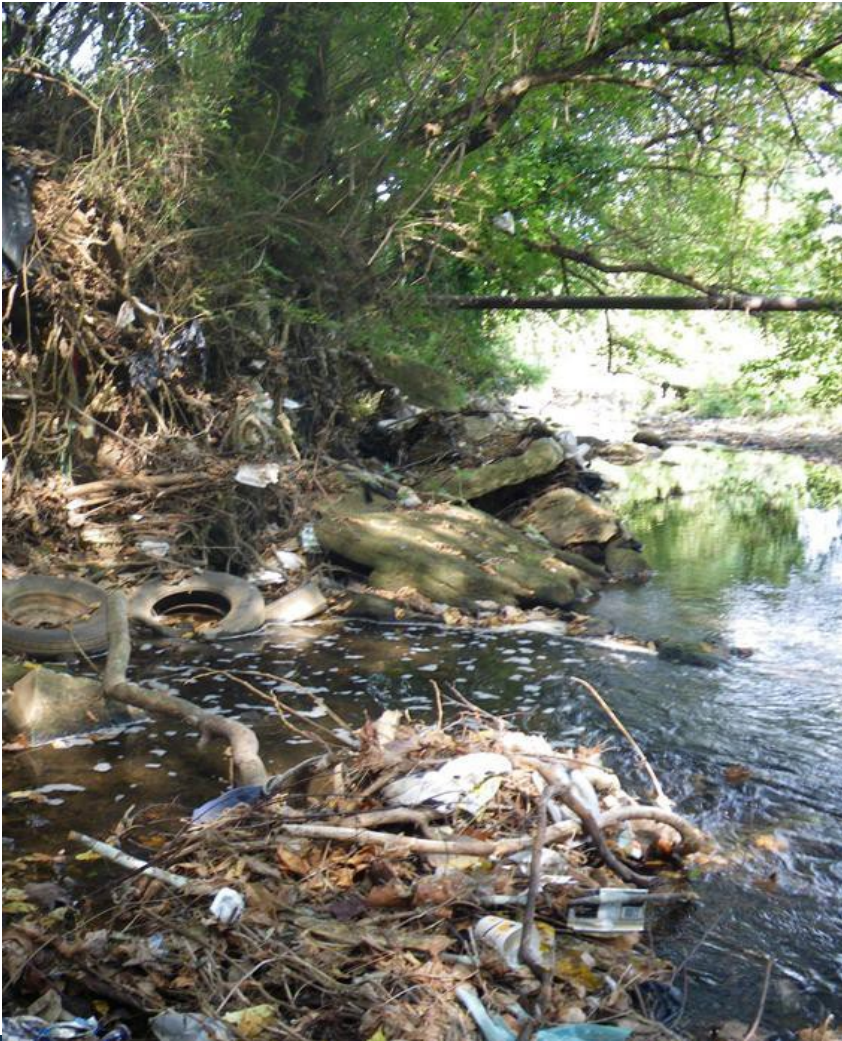


***Searching for Community-Based Solutions
in
Green Infrastructure***



Atlanta's Proctor Creek Communities: Vine City and English Avenue



- 40% population decline in a decade
- Highest poverty, vacancy and crime rates
- 40% foreclosure rate
- Average household income \$22,474
- Fewest acres of planned greenspace
- Natural creek obliterated by development
- Severe flooding from stormwater overflows
- 29 EPA identified hotspots along the creek
- Feeds directly into the Chattahoochee River



Multiple Significant Problems....





- Community leaders developing plans
- Access to decision making & resources
- Local residents receiving educational training
- Capacity building for grassroots organizations
- Access to recreation, nature and exercise
- Citizen Science opportunities





- Workforce training for local residents
- General construction skills
- Demolition & deconstruction
- Financial literacy training
- Employment opportunities





- First park for community
- Daylight Procter Creek.
- Stormwater capture and improved water quality
- Habitat restoration & pollinator gardens
- Removal of invasive plants



THE CONSERVATION FUND



The Community's Triple Bottom Line: Realized!

Questions?