

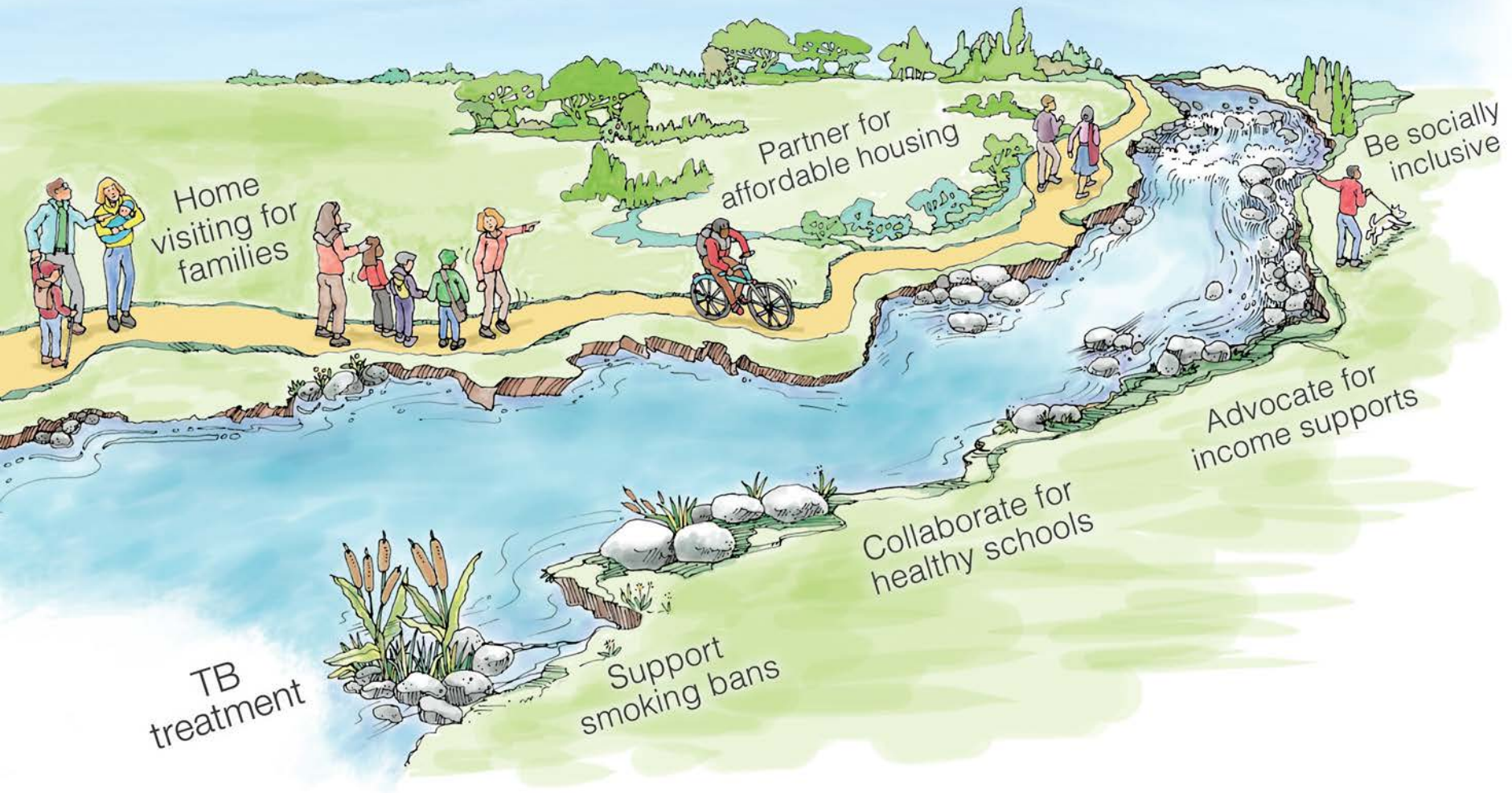
Middle Rio Grande Urban Waters Partnership

Building an Effective Program: How'd We Do It?

July 27, 2016

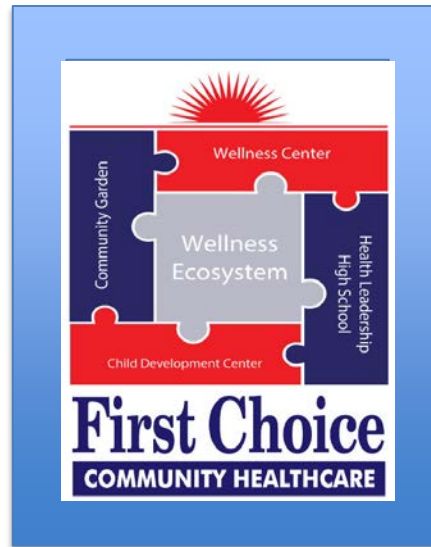
Michelle Melendez

Upstream-Downstream Parable



**HRSA
CDC REACH
USDA
BUILD Health
Challenge
Local Partners
EDA**

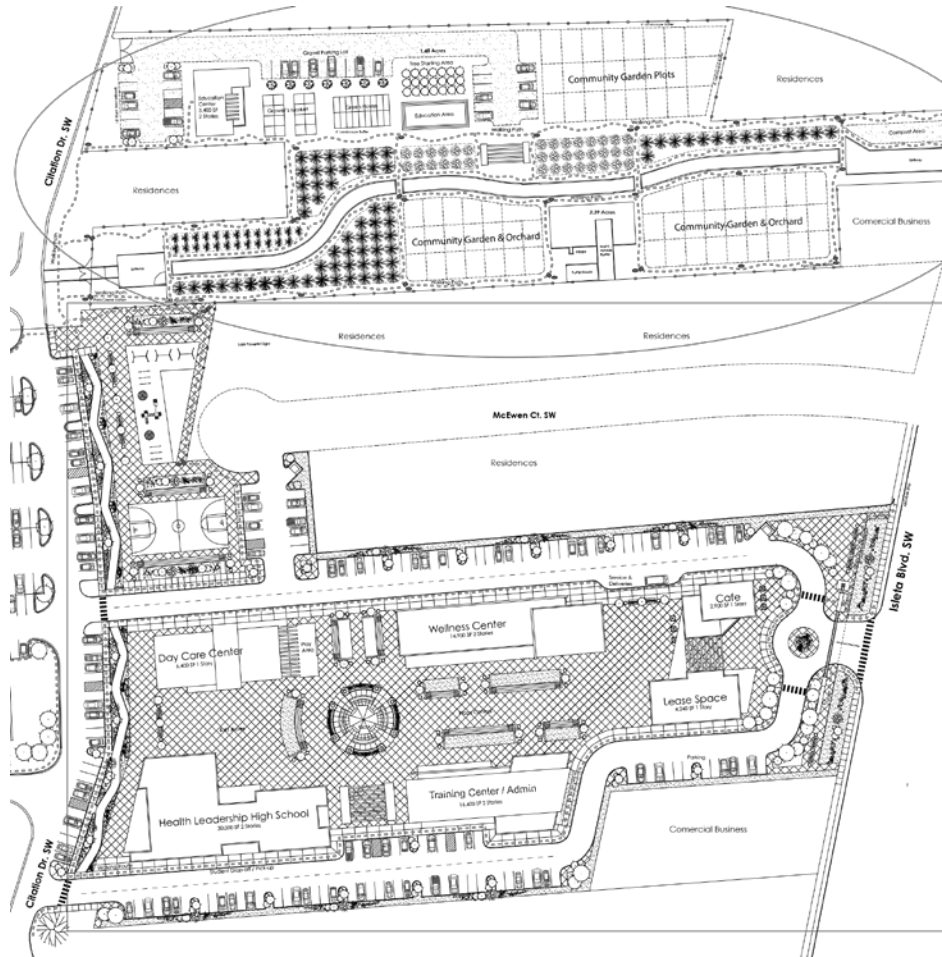
**HUD
EPA
DOI
NPS
USFS
USFW**



Please click on the link below to watch a video about the South Valley Community Commons project:

<http://www.fcch.com/our-community/volunteer-south-valley-community-commons>

South Valley Wellness Ecosystem



R_xTRAILS

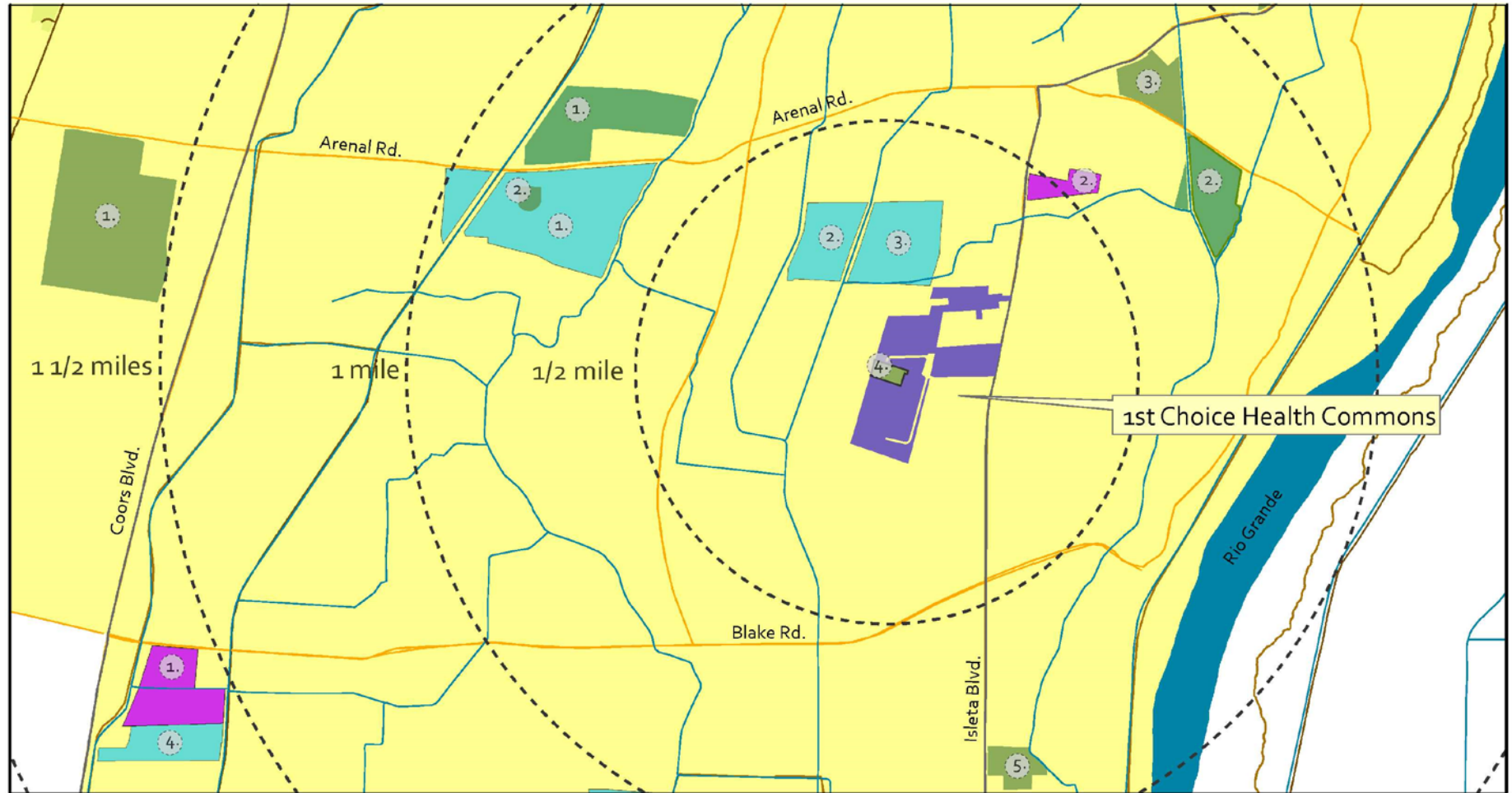
BEFORE



AFTER



South Valley Health Eco-System



0 500 1,000 2,000 3,000 Feet

APS Charter Schools

1. South Valley Academy
2. Navajo Elementary School

APS Public Schools

1. Rio Grande High School
2. Kit Carson Elementary School
3. Ernie Pyle Middle School
4. Navajo Elementary School

County Parks

1. Tom Tenorio Park
2. Rio Grande Interior Pool
3. Westside Community Center
4. Armijo Senior Meal Site
5. Shadyside Park

County Open Space

1. Arenal Open Space
2. Sanchez Farm

Legend

- Bicycle Route
- MRGCD Drain
- Trail

R_x PARKS

BEFORE



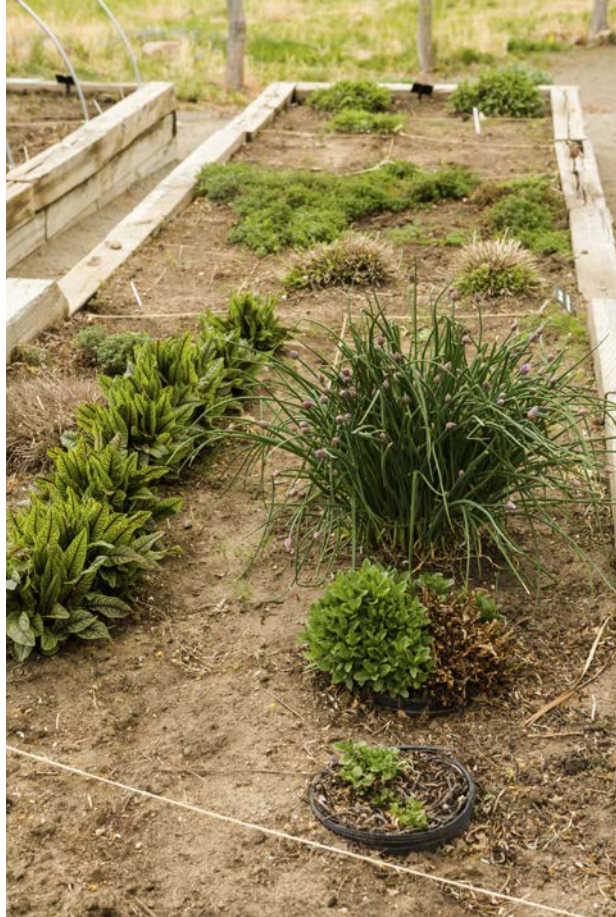
AFTER



Youth Conservation Corps.



FRESH FOOD **R_x**



Urban Agriculture



**La Cosecha CSA
Community Supported Agriculture**

Agri-Cultura Network Food Hub

Urban Healthy Fields



East Capitol Urban Farm, Washington DC Master Site Plan

Keys to Success

Engage Everyone in the Visioning

- Everyone can see themselves and their missions being served by the project

Multiple Bottom Lines/Measures of Success

- Jobs
- Health Outcomes
- Educational Outcomes
- Enterprise Development
- Green Site Development
- Conservation of natural resources



Thank You!

This presentation was made possible with funding from the Centers for Disease Control and Prevention to the Bernalillo County Healthy Here Initiative through a grant to Presbyterian Healthcare Services.

The views expressed in this presentation do not necessarily represent the official policies of the CDC or imply endorsement by the US Government

For more information, please visit fcch.com or contact:

Michelle Melendez

Development Director

**First Choice Community
Healthcare**

505-274-2012

michelle_melendez@fcch.com