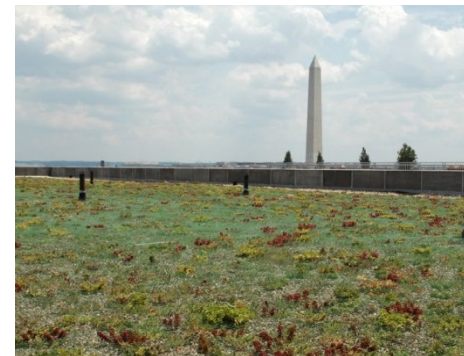


Engaging Private Sector Investment in Green Infrastructure in Washington, DC



Brian Van Wye

Associate Director, Regulatory Review Division

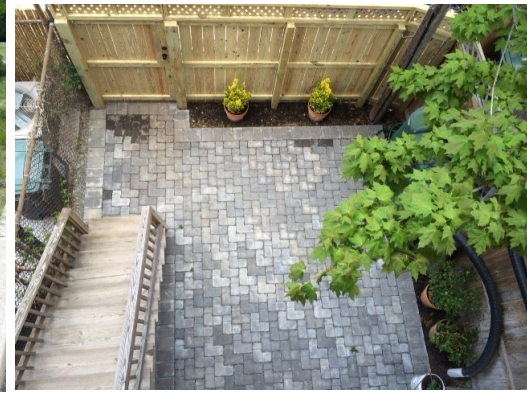


Co-Pay and Rebate Programs



RIVERSMART

- Homes
- Communities
- Schools
- Rooftops



Stormwater Management Regulations

- Development must retain stormwater with GI
- Most regulated development in District is redevelopment
- Gradual transformation of DC's 43% impervious area
- Stormwater Retention Credit market creates opportunity to shift GI investment to areas that provide greatest water quality benefit

10:1

Total area subject to SWM regulations annually: ~15M sq. ft.

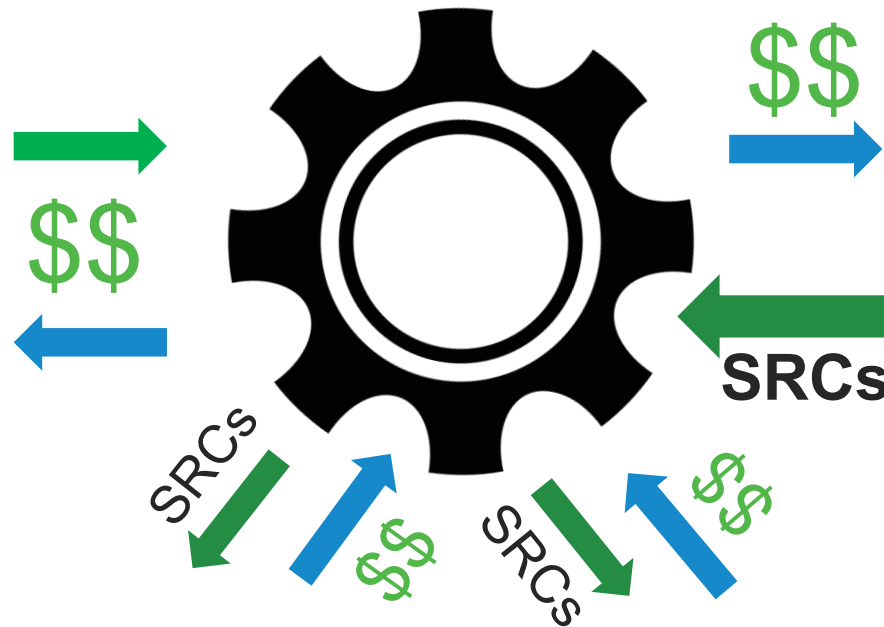
: Total area retrofitted with retention via DOEE co-pay, rebate, and public cost share annually

Stormwater Retention Credit Price Lock

INVESTORS



SRC AGGREGATORS



GI RETROFITS



SRC PRICE LOCK PROGRAM



REGULATED DEVELOPMENT

MORE INFORMATION

Brian Van Wye

Brian.VanWye@dc.gov

(202) 741-2121

RiverSmart Programs

doee.dc.gov/riversmart

Stormwater Management Regulations

doee.dc.gov/swregs

Stormwater Retention Credit Market

doee.dc.gov/src

★ ★ ★ DEPARTMENT
OF ENERGY &
ENVIRONMENT

GOVERNMENT OF THE DISTRICT OF COLUMBIA