



July 26, 2016

PRINCE GEORGE'S COUNTY | CORVIAS SOLUTIONS



# EXISTING CONDITIONS:

## POLLUTED RUNOFF





# EXISTING CONDITIONS:

## POLLUTED RUNOFF





# NEW CLEAN WATER ACT MANDATES

## EPA SETS AMBITIOUS GOALS

### Mandate for Prince George's County

- Build filters to treat 15,000 impervious acres by 2025
  - Approximately 46,000 stormwater filtration devices
  - Will cost approximately \$1.2 billion
- Pay for this with a dedicated funding source (Clean Water Act Fee)

### The Prince George's Model: *Make this mandate work for us*

- Clean our waters
- Revitalize older communities
- Lead with innovation
- Grow local economy
- Partner as much as possible



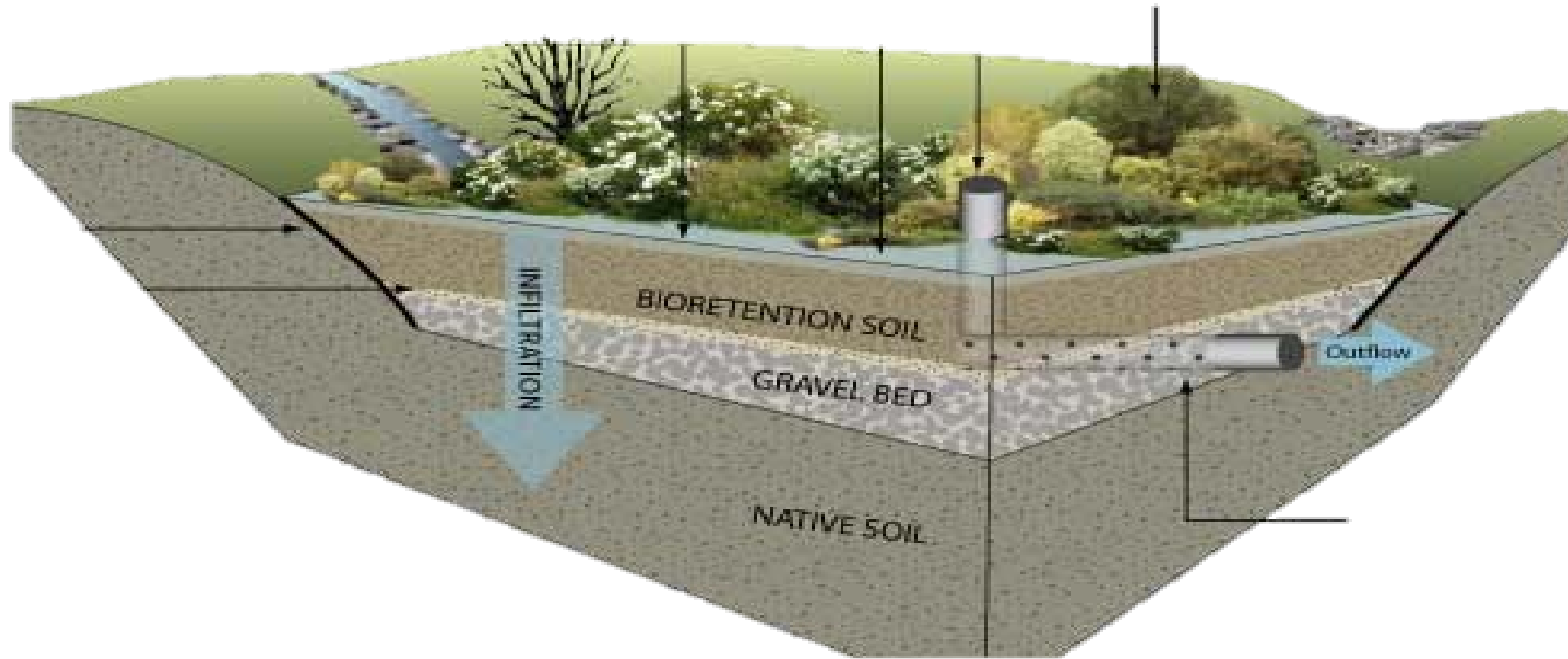


# CLEAN WATER THROUGH RETROFITS

## TREEBOX RAINGARDENS



# BMP FACILITY FUNCTION





# CLEAN WATER PARTNERSHIP (CWP)

## THE COUNTY SETS AMBITIOUS GOALS





# CLEAN WATER PARTNERSHIP

## LOCAL INVESTMENT, JOBS, BUSINESS, DEVELOPMENT, COMMUNITY WEALTH

- Partner: Corvias Solutions
- Schedule: 3 years to retrofit 2,000 acres (1,000 completed by March 2017 triggers and additional 2,000 acres)
- Program Scope: Design, Build, Operate, Finance, and Maintain
- Total Cost:\$100M
  - Base and incentive fee if performance goals are met:
    - Time, budget, “Target Class” goals, business development, etc.
    - Requires “Target Class” spending/participation up to 40%





# KEY PARTNER: PRIVATE SECTOR

“BETTER, GREENER, FASTER”

**Launching Public Private Partnership (P3) Model for Efficiency to build our clean water infrastructure and green infrastructure economic cluster**

- Provide mechanisms to effectively manage scope, schedule, and costs and develop risk mitigation strategies for the delivery of program goals and objectives.
- Efficiencies in procurement, permitting, design, construction, maintenance, and operations.
- Economic development requirements
  - Expand capacity of local businesses
  - Attract and develop new businesses to County





# KEY PARTNERSHIP PARTICIPANTS



## Public Partner

- Oversight & Review of Program Activities
- Performance Assessments & Benchmarking
- Revenue / Funding
- Project Prioritization



## Private Partner

- Master Planning (1 to 3 yr. / Annual / Projects)
- Construction and Long-Term Asset Management
- Local Economic Development and Community Outreach
- Identification of Alternative Financing
- Ensuring Proper Implementation and Management of Assets
- 100% Guaranteed Budget Book Scope

## 3<sup>rd</sup> Party Completion Certifier

Maryland Environmental  
Services





# FIRST PROJECT: FORESTVILLE NEW REDEEMER BAPTIST CHURCH

## Stormwater Management at Forestville New Redeemer Baptist Church

From a typical sidewalk



Before construction

to a permeable one that will allow water to pass into the ground



During construction

Our new sidewalk received quite the soaking during construction! Thank you to the Forestville New Redeemer Baptist Church congregation for your patience and cooperation.



permeable sidewalk



Clean Water Partnership  
Alternative Compliance Program

The Alternative Compliance Program is open to any non-profit or tax-exempt faith-based group that owns property in the County. Visit the County's website at [www.princegeorgescountymd.gov/sites/environmentalresources/](http://www.princegeorgescountymd.gov/sites/environmentalresources/) to learn more about how the Clean Water Partnership and the Alternative Compliance Program are transforming the County!



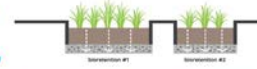
## Stormwater Management at Forestville New Redeemer Baptist Church

From grassy lawns



Before construction

to bioretention cells



Bioretention cells are installed to capture, absorb and filter rainwater from the Church's roof and downspouts.



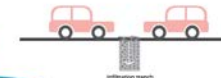
During construction

From a typical parking lot



Before construction

to one that lets water seep into the ground



A parking lot infiltration trench collects rainwater and releases it to the ground.



During construction



Clean Water Partnership  
Alternative Compliance Program

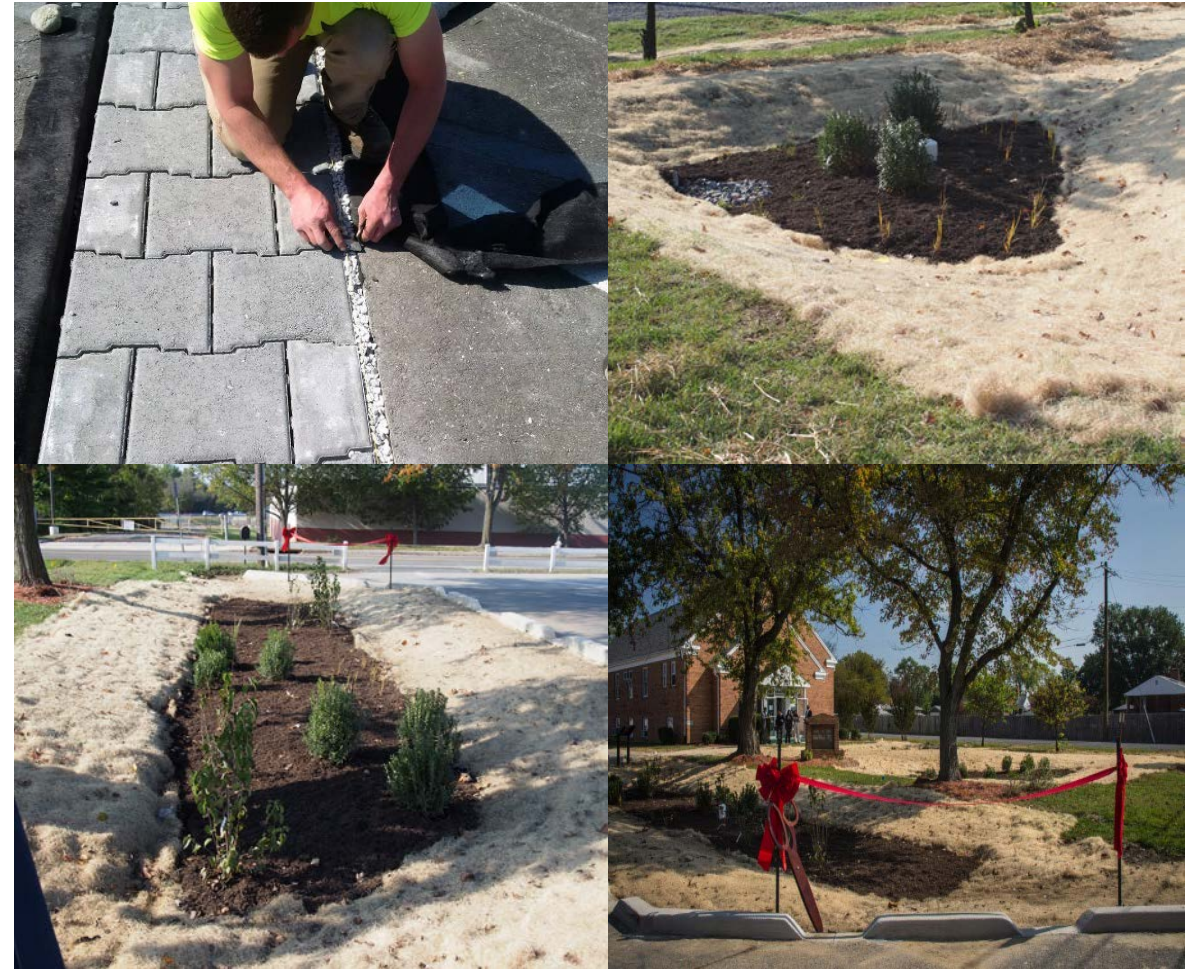
The Alternative Compliance Program is open to any non-profit or tax-exempt faith-based group that owns property in the County. Visit the County's website at [www.princegeorgescountymd.gov/sites/environmentalresources/](http://www.princegeorgescountymd.gov/sites/environmentalresources/) to learn more about how the Clean Water Partnership and the Alternative Compliance Program are transforming the County!





# FIRST PROJECT: FORESTVILLE NEW REDEEMER BAPTIST CHURCH

- Installation of pervious pavers to replace concrete walkway that will allow stormwater to soak into the ground slowly;
- Three rain gardens and an infiltration trench that will catch stormwater runoff along the property grounds; and
- A bioswale, a low tract of moist or marshy piece of land that will provide drainage from the north corner of the property to the existing inlet near the west corner.



# FIRST PROJECT: FORESTVILLE NEW REDEEMER BAPTIST CHURCH

## Social & Economic Benefits:

- Three Prince George's County-based Minority Business Enterprises include:
  1. Faulkner Lawn and Landscaping;
  2. M&G Services;
  3. GeoTech Engineers, Inc.





# PROGRAM EXECUTION IN 2016

- CONSTRUCTION ACTIVITIES ARE SEASONAL (SPRING, SUMMER, AND FALL).
- THE FIRST FULL CONSTRUCTION SEASON COMMENCED IN SPRING 2016 WITH APPROXIMATELY 946 ACRES PLANNED FOR COMPLETION



# PROJECT PIPELINE: PLANNED PROJECTS

## PLANNED PROJECTS

**2832.67**

TOTAL TREATED ACRES IN DEVELOPMENT



CHURCHES

**64.07**

ACRES



OUTFALLS

**85**

ACRES



PONDS

**1845.86**

ACRES



PRODUCTION

**800.88**

ACRES



SCHOOLS

**36.86**

ACRES

DISTRICT 1

**382.53**

ACRES

DISTRICT 2

**21.65**

ACRES

DISTRICT 3

**32.92**

ACRES

DISTRICT 4

**470.88**

ACRES

DISTRICT 5

**206.69**

ACRES

DISTRICT 6

**247.39**

ACRES

DISTRICT 7

**79.12**

ACRES

DISTRICT 8

**432.23**

ACRES

DISTRICT 9

**591.17**

ACRES



# PROJECT PIPELINE: GREEN BELT LAKE

Existing Condition



At Completion



## Greenbelt Lake: Before and After

Install, upgrade, and maintain two forebays that treat a minimum of 10 percent of the lake volume with a drainage area of 507 acres with **337 impervious acres treated.**

**Construction Start: July 2016**  
**Planned Completion: Fall 2016**

# PROJECT PIPELINE: PGCCPS

- Bond Mill Elementary School
- Calverton Elementary School
- Capital Heights Elementary School
- District Heights Elementary School
- Frances Scott Key Elementary School
- Friendly High School
- Gwynn Park High School
- High Point High School
- John Hanson Montessori
- Laurel Elementary School
- Magnolia Elementary School
- Oxon Hill Middle School
- Parkdale High School
- Potomac High School
- Rosa L. Parks Elementary School
- Scotchtown Hills Elementary School
- Templeton Elementary School
- Walker Mill Middle School





# PROJECT PIPELINE: JUNIOR ACHIEVEMENT



- A massive bed of natives plants that process stormwater and provide habitats and food for nearby wildlife;
- Plants that includes pollinators to feed butterflies and hummingbirds; and
- A walkway consisting of permeable pavers



# PROJECT PIPELINE: ALTERNATIVE COMPLIANCE PROGRAM

**150** faith-based organizations

**50+ acres** of retrofits

*“We felt that we were an integral partner in this process from the very beginning. [CWP leaders] listened to us — we had dialogue back and forth. They heard us, they heard out hearts and took in what we shared. I knew this would be something good; not only for this church but for our community at large.”*

- Pastor Nathaniel Thomas,  
Forestville New Redeemer Baptist Church





# KEY PARTNERS: SCHOOLS

Our 200 school properties can help us meet our retrofit acreage goals while we help them meet their environmental literacy goals, turning raingardens into outdoor classrooms.



# KEY PARTNERS: CHURCHES AND NONPROFITS

## Alternative Compliance Program - Up to 100% Reduction of Impact Portion of Clean Water Act Fee

1. **Stormwater controls:**  
Up to 50% reduction
2. **Green Teams and Green Ministries:** Up to 25% reduction
3. **Green Housekeeping:**  
Up to 25% reduction





# CONTRACTOR DEVELOPMENT

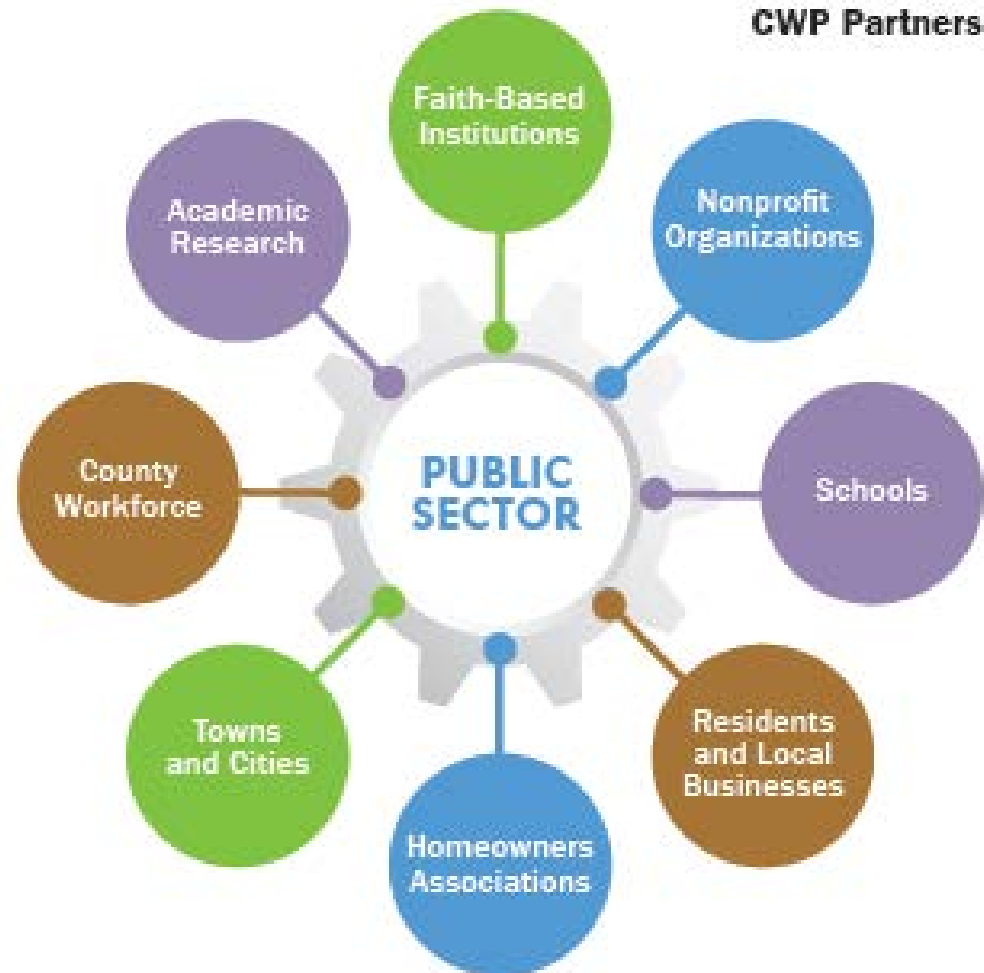
## Mentor Protégé Program Class of 2016

1. Clean Sweep Trucking & Refuse
2. Estime Enterprises, Inc.
3. Faulkner Lawn Care & Landscaping
4. Grace Management & Construction LLC
5. Green Forever
6. Kirila Earthworks
7. M&G Services, Inc.
8. Phoenix Infrastructure

***\*MPA only requires two.***



# COMMUNITY OUTREACH





# END TIME HARVEST MINISTRIES

- Second year collaboration with End Time Harvest Ministries for summer stormwater education and internship opportunities with local businesses



# MUNICIPAL OUTREACH

Diligently worked with Municipalities of PGC to ensure transparency and gain buy-in for projects, during the early stages of planned projects:

- **Seat Pleasant**
- **Riverdale Park**
- **District Heights**
- **Riverdale Park**
- **College Park**
- **Laurel**
- **New Carrollton**
- **Hyattsville**
- **University Park**
- **Berwyn Heights**
- **Greenbelt**

*As of July 2016*





# TNI OUTREACH

- Provided program overview at the TNI meetings
- Currently rescheduling meetings to attend in July 2016 to discuss the Green Streets program in which each TNI will receive one Green Street transformation as part of the CWP



# BUSINESS OUTREACH





# LOCAL PARTNERSHIPS



# PARTNERSHIP HIGHLIGHTS

- Program on schedule to deliver 946 acres by late December 2016.
- Meet all performance metrics aligned with County's goals.
- Alternative financing through a \$48M Maryland State Revolving Fund loan for ~1,000 acres.





# PARTNERSHIP HIGHLIGHTS

- Featured by Clinton Global Initiative at CGI America 2016, and national recognition from the White House and Environmental Protection Agency.
- NACo - The National Association of Counties (NACo) granted Prince George's County a 2016 Achievement Award for the development of the Clean Water Partnership, in the category of Community/Economic Development.

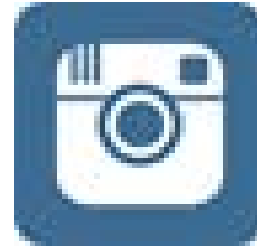


# NATIONALLY RECOGNIZED





# WE'RE CONNECTED



[WWW.THECLEANWATERPARTNERSHIP.COM](http://WWW.THECLEANWATERPARTNERSHIP.COM)

QUESTIONS?

