



Far Northeast Ward 7 Equity Advisory Group



In just one generation—20 years—the District of Columbia will be the healthiest, greenest, and most livable city in the United States.

Vulnerability and Risk Assessment

Adaptive Capacity

Factors that influence an individual's ability to bounce back or adapt to stresses caused by climate change.

- Unemployment
- Level of education
- Poverty Prevalence



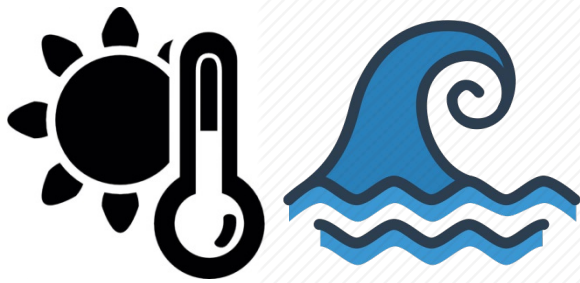
Sensitivity

Social, biological or economic factors that make individuals more sensitive to climate impacts.

- Age
- Obesity
- Asthma
- Poverty
- Unemployment
- Education

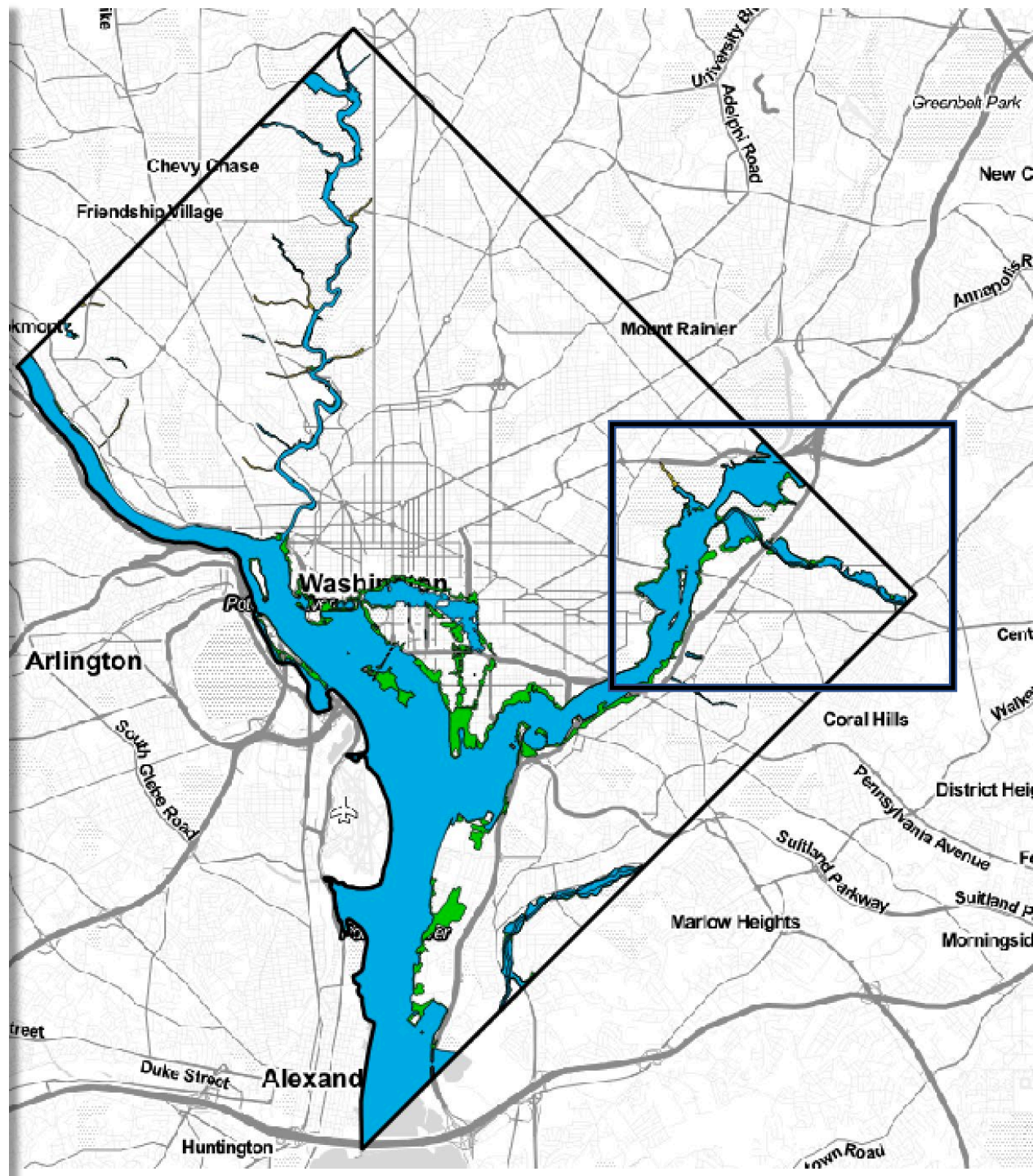


VULNERABILITY & RISK ASSESSMENT



Social Indicators:

- Unemployment
- Educational attainment
- Poverty prevalence
- Obesity
- Adult asthma
- Age (65+)





A diagram showing the Equity Advisory Group (EAG) at the center, surrounded by four stakeholders: DC DOEE, Georgetown Climate Center, Neutral Facilitator, and Evaluator. The central circle is green, and the surrounding circles are blue.

DC DOEE

Neutral
Facilitator

Equity
Advisory
Group
(EAG)

Georgetown
Climate
Center

Evaluator

Your approach should be grounded
through the lens of community
priority



Transparency Matters

CLIMATE READY DC



Justin Lini
EAG Member

Round

Katherine Jackson
EAG Member

LaQuana Fennell
EAG Member

A year is not enough

January

Understanding
the Landscape

February - March

Building Climate
Knowledge

April - May

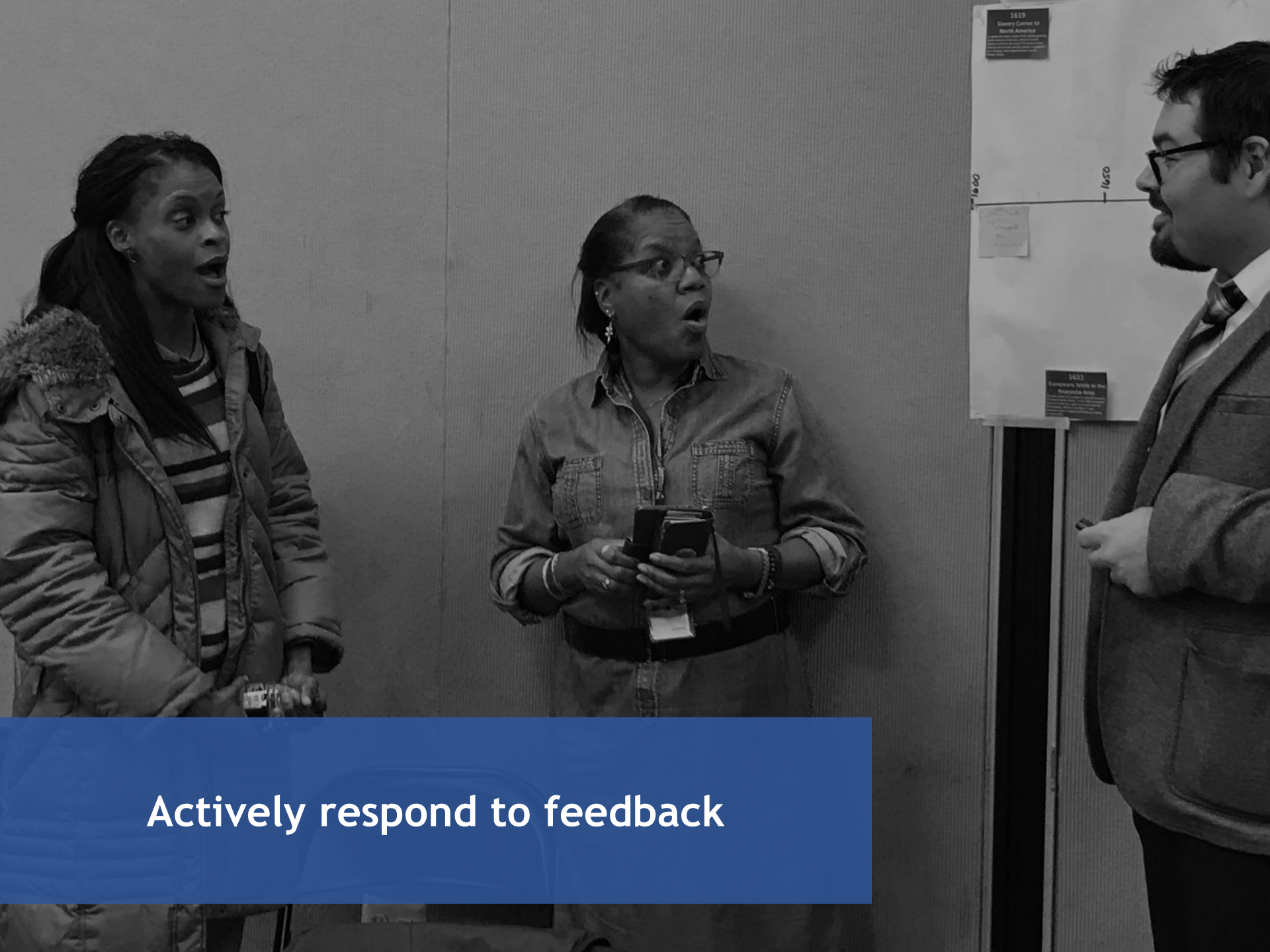
Recommendation
Development

June

Developing Next
Steps

Create Space to Learn Together





Actively respond to feedback

Future challenges

Sharing decision
making power

Creating
accountability
assurances

Fund local
capacity

Implementation

Contact Info:



Everette Bradford
everette.bradford@dc.gov

