



---

# **Urban Waters National Training Workshop**

**July 27, 2016**

**Lessons Learned from Community Action for a  
Renewed Environment (CARE)**

**Marva E. King, PhD**

**Senior Policy Advisor -- EPA's Office of EJ**

**[www.epa.gov/environmentaljustice](http://www.epa.gov/environmentaljustice)**

# HISTORICAL CONTEXT

---

**EJ Becomes a National Concern**

**National Environmental Justice Advisory Council  
(NEJAC)**

**Interagency Working Group on Environmental Justice**

**Community Action for a Renewed Environment  
(CARE)**

**What's Next**



# The Early Years Confirmed Relationship between Siting and Socio-economic Status

---

- 1982 – Warren County – The Beginning of a National Movement
- 1983 US Government Accounting Office report
- 1987 United Church of Christ (UCC) Commission for Racial Justice national study
  - *Toxic Waste and Race in the United States*
- 1992 -- National Law Journal





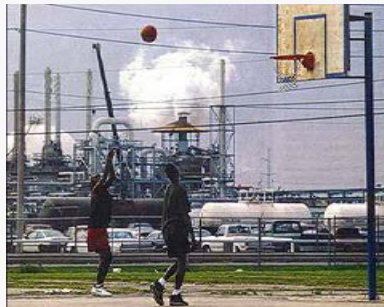
# Early Government EJ Actions

- **EPA establishes the Office of Environmental Equity (later changed to Office of EJ)**
  - ✓ EJ Coordinators (Regions/HQTRS)
  - ✓ National Environmental Justice Advisory Council (NEJAC)
- **Clinton 1994 EO Environmental Justice 12898**
  - ✓ Federal Actions to Address Environmental Justice in Minority Populations and Low Income Populations
  - ✓ Interagency Working Group on EJ established with EPA as lead



# EPA Defines Environmental Justice As...

... the **fair treatment** and **meaningful involvement** of all people regardless of race, color, national origin, or income with respect to the development, implementation, and enforcement of environmental laws, regulations, and policies.



*EJ means that everyone enjoys the same degree of protection from environmental and health hazards and equal access to the decision-making process to have a healthy environment in which to live, learn, work, play and pray.*



# NEJAC Policy Implementation

<http://www3.epa.gov/environmentaljustice/nejac/recommendations.html>

- Model Plan for Public Participation (1996 and 2000)
- National EJ Roundtables (1996-1999)
- Environmental Justice, Urban Revitalization, and Brownfields: The Search For Authentic Signs Of Hope (1996)
- Guide On Consultation And Collaboration with Indian Tribal Governments and The Public Participation of Indigenous Groups And Tribal Members in Environmental Decision Making (1999-2000)
- Fish Consumption and EJ (2002)



# NEJAC Policy Implementation

## ENVIRONMENTAL JUSTICE AND COMMUNITY-BASED HEALTH MODEL DISCUSSION AND RECOMMENDATIONS REPORT



*Prepared by the  
National Environmental Justice Advisory Council*

A Federal Advisory Committee to the U.S. Environmental Protection Agency

## ENSURING RISK REDUCTION IN COMMUNITIES WITH MULTIPLE STRESSORS: ENVIRONMENTAL JUSTICE AND CUMULATIVE RISKS/IMPACTS

NATIONAL ENVIRONMENTAL JUSTICE ADVISORY COUNCIL



DECEMBER 2004

*Prepared by the  
National Environmental Justice Advisory Council  
Cumulative Risks/Impacts Work Group*

- Promote Better Understanding Community Based Participatory Research Methods & Effective Interagency Cooperation
- Institute a “bias for action” through utilizing an EJ CPS Model.
- Promote paradigm shift to community based approaches
- Efficient screening, targeting and prioritization methods/tools to id communities needing immediate intervention

# What was CARE?

**CARE was a**

- ☐ **community-based**
- ☐ **community-driven** program
- ☐ **created to build local partnerships**
- ☐ **to help communities understand and**  
**reduce risks from all sources of**  
**toxics;**



# What Did CARE Do?

- ❑ CARE brought together local partners - businesses, residents and local governments, etc. - to address their environmental problems and work together to find solutions.
  - ❑ Created local partnerships that leverage resources and sustain environmental health efforts over time
- ❑ CARE provided communities with funding, tools, and technical assistance for solution implementation, so that environmental exposures are reduced
- ❑ Addressed multimedia environmental problems
- ❑ Reduced risks to improve local public health and environment

# From 2005-2009

## What CARE Communities Did:

- Leveraged dollar-for-dollar EPA grant funding.
  - Communities leveraged **over \$15M** from local and national sources.
  - Received in-kind donations of an **additional \$2M**.
- Engaged over **1,700 partners** in local projects (local organizations, businesses, local and state agencies, universities, foundations, federal agencies).
- Visited over **4,000 homes** providing information and/or environmental testing
- Provided environmental information to:
  - Over **2,800 businesses**
  - Over **50,000 individuals**
- Engaged over **300 schools, 6,300 youth**



# CARE projects



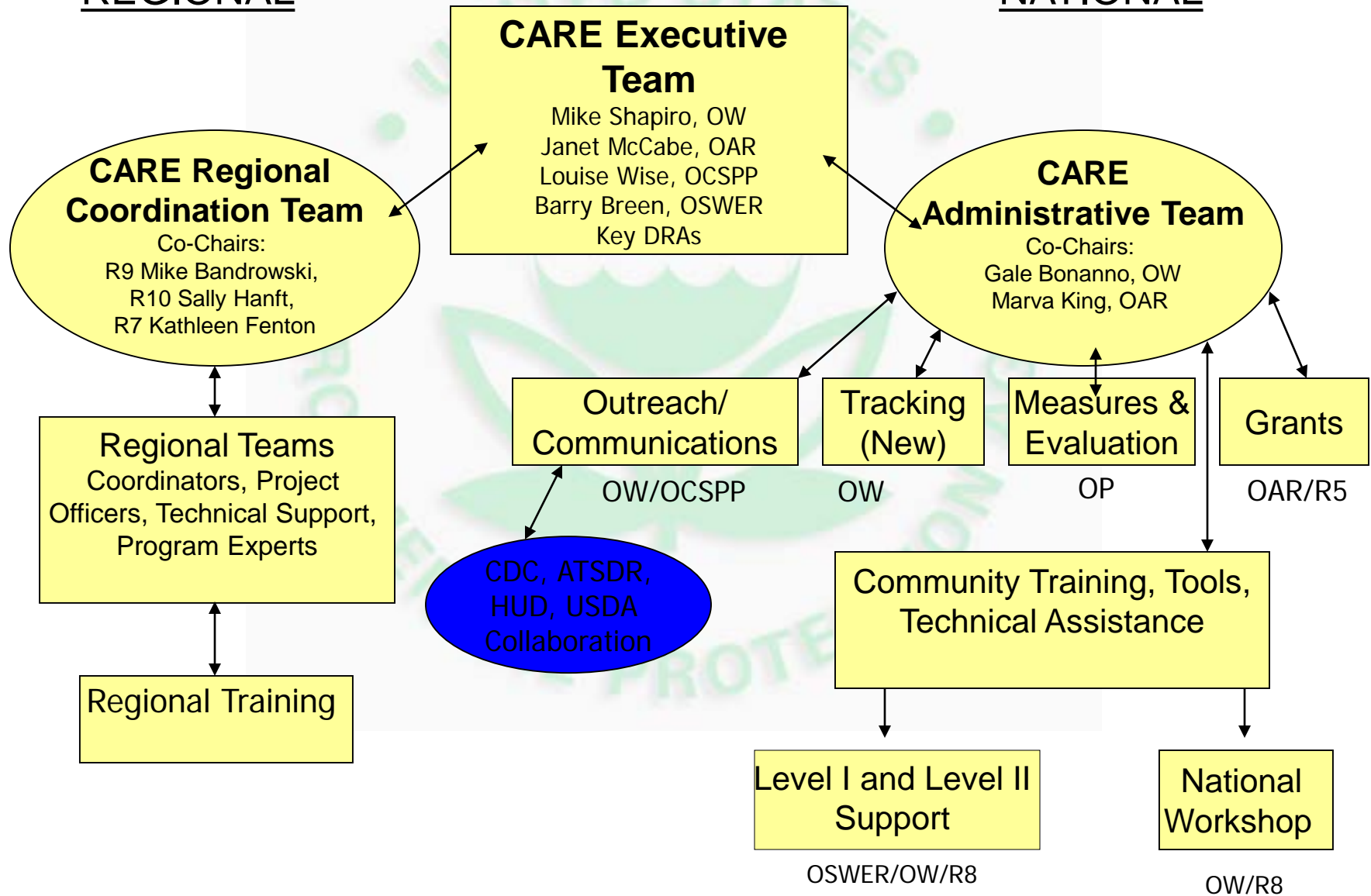
CARE issued 101 grants worth \$16.1 million to 85 communities



# How CARE Worked

## REGIONAL

## NATIONAL



# Examples of Businesses that were CARE Partners

- 
- AB Trucking
  - Alabama Power Company
  - Arizona Chemical, LLC
  - Ashland Inc.
  - Bank of America
  - Blue Sun Biodiesel
  - Boeing
  - Campbell Soup
  - Churchill Transportation
  - Connstep, Inc.
  - Dole Fresh Fruit
  - Durango McKinley Paper Company
  - Eastman Kodak
  - Energía, LLC
  - Ford Motor Company/Rouge Plant
  - General Dynamics, Inc.
  - Goodrich Corporation
  - Krapf Bus Company
  - Pacific Gas & Electric Company
  - Schwan Food Company
  - Senath State Bank
  - South Jersey Port Corporation
  - Sprague Energy
  - Suncor Energy
  - U.S. Steel
  - Waste Management, Inc.

Disclaimer: Listed for informational purposes only. No endorsement intended

# Examples of Business Organizations That Were CARE Partners

- Chamber of Commerce Visioning Wichita-Sustainability Coalition
- Chinatown-International District Business Improvement Area
- Genesee Transportation Council
- Kenneth MO Chamber of Commerce
- Mercer Regional Chamber of Commerce
- North Salina Community Development Group
- Southwest Detroit Business Association
- Rochester Green Business Network
- South Jersey Port Corporation
- West Oakland Commerce Association

Disclaimer: Listed for informational purposes only. No endorsement intended



# Strong Support for CARE

## NAPA Report May 12, 2009:

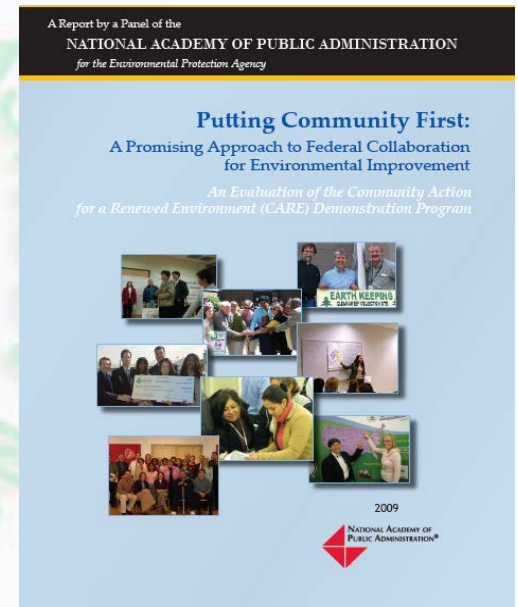
- *“CARE complements EPA’s traditional regulatory and enforcement efforts to provide additional **targeted assistance to communities at highest risk.**”*
- *“The CARE partnership engages the energy of the community and the expertise of EPA to identify and reduce pollutants...”*
- *“CARE makes EPA more responsive to communities needs and priorities through an emphasis on community-driven priorities.”*

## NEJAC Letter to Administrator:

- *“CARE has already proven to be a high quality community tool that supports environmental justice”*
- *“...CARE Program is a community tool (EJ communities) need”*
- *“NEJAC is compelled to advise and encourage expansion of and increased funding for the CARE program by your Agency.”*

## Community Support:

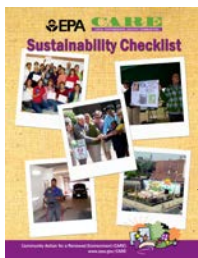
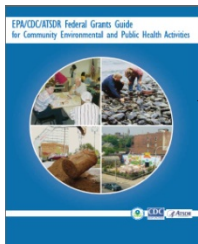
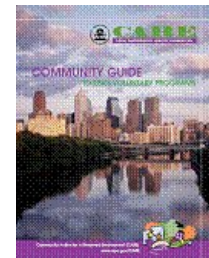
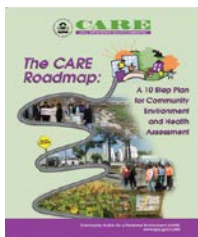
- *“CARE has given us a voice”*
- *“There would have been virtually no progress without the CARE partnership”*



# One-Stop Shop To Community Tools

CARE Partnerships and EPA staff collaborated on these tools to help community-based groups:

- **The Roadmap:** A 10-step method for communities to assess and prioritize local risks
- **Community Guide to EPA's Partnership Programs:** A guide of EPA voluntary programs of greatest benefit to communities
- **Grants Guide:** A compilation of funding sources for community environmental and public health activities
- **Promising Practices to Improve Community Performance and Sustainability:** Successful practices used by 14 CARE communities that improved performance and sustainability.
- **Measurement Tips & Resources for Community Projects:** How to measure progress made by community projects working to improve environmental health
- **Sustainability Checklist:** Ways to ensure the project continues to improve the environment after the EPA CARE funding ends.



# CARE Next Steps

## EPA's Office of International Activities Partnership

- EPA Technical Assistance on the CARE Model
- June 2016 ReciclAção Project Workshop
- Rio de Janeiro, Brazil





# EPA OEJ NEXT STEPS

- **EJ 2020 Action Agenda (public comments due July 28<sup>th</sup>)**  
<https://www.epa.gov/environmentaljustice/draft-environmental-justice-2020-action-agenda>
- **Tools**
  - **EJSCREEN**
- <https://ejscreen.epa.gov/mapper/>
- [https://www.epa.gov/sites/production/files/2016-07/documents/ejscreen fact sheet.pdf](https://www.epa.gov/sites/production/files/2016-07/documents/ejscreen_fact_sheet.pdf)
- **Grants/Technical Assistance**
  - EJ Small Grants
  - EJ Collaborative Problem Solving Grants<https://www.epa.gov/environmentaljustice/environmental-justice-grants-and-resources>
- **Technical Assistance Services for Communities**  
<https://www.epa.gov/superfund/technical-assistance-services-communities-tasc-program>



# NEJAC Youth Perspectives: Climate Justice

---

EPA requested NEJAC provide recommendations to assist the Agency in developing best practices for addressing climate change concerns, as highlighted from a youth perspective.



# Contact Information

---

## EPA's EJ Blog

[https://blog.epa.gov/blog/category/environmental\\_justice/](https://blog.epa.gov/blog/category/environmental_justice/)

## EPA's EJ List Serve

[https://lists.epa.gov/read/all\\_forums/subscribe?name=epa-ej](https://lists.epa.gov/read/all_forums/subscribe?name=epa-ej)

**Marva E. King, PhD**

**OEJ's Senior Policy Advisor**

[King.marva@epa.gov](mailto:King.marva@epa.gov)

**202-564-2599**

